

WAAS CH <b>58304</b> <b>W36A</b>	APP CRS <b>005°</b>	Rwy Idg <b>5264</b> TDZE <b>759</b> Apt Elev <b>777</b>
--	------------------------	---

# RNAV (GPS) RWY 36

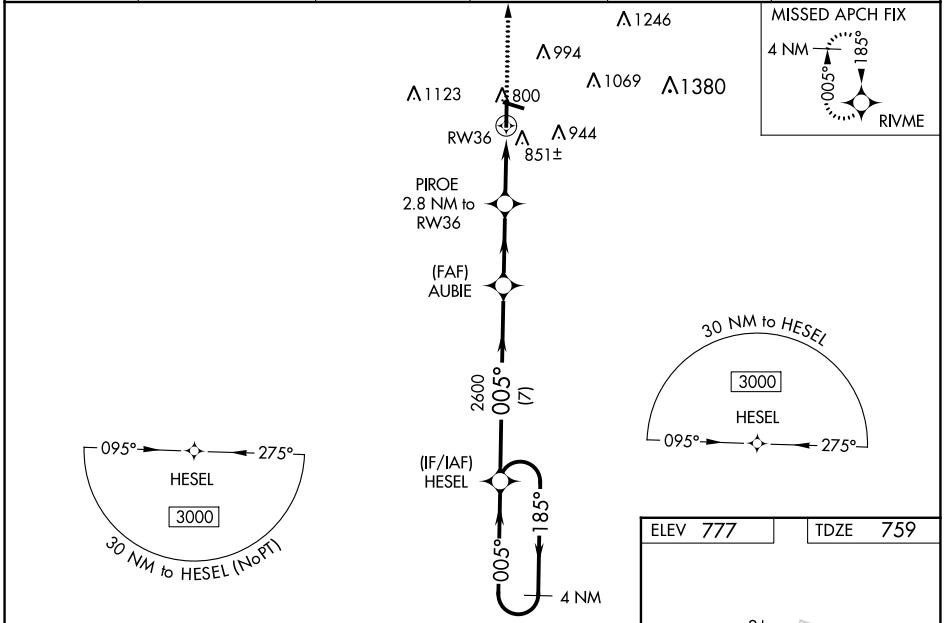
AUBURN UNIVERSITY RGNL (AUO)

**⚠** For uncompensated Baro-VNAV systems, LNAV/VNAV NA below -16°C (4°F) or above 54°C (130°F). Baro-VNAV and VDP NA when using Columbus altimeter setting. DME/DME RNP-0.3 NA. When local altimeter setting not received, use Columbus altimeter setting: increase LPV DA to 1072 feet and visibility all Cats 1/2 SM; increase LNAV/VNAV DA to 1173 feet and visibility all Cats 3/8 SM; increase all MDA 120 feet and LNAV Cats C/D visibility 1/4 SM and Circling Cats C/D visibility 1/2 SM. For inop ALS, increase LNAV/VNAV Cat D visibility 1/4 SM and LNAV Cat D visibility 1/8 SM. For inop ALS, when using Columbus altimeter setting, increase LPV all Cats visibility to 1 1/8 SM, LNAV/VNAV all Cats visibility to 1 1/2 SM, and LNAV all Cats visibility to 1 3/8 SM.

**MALSF**

**MISSED APPROACH:** Climb to 3000 direct RIVME and hold.

AWOS-3PT <b>132.575</b>	ATLANTA APP CON ★ <b>125.5 323.1</b>	AUBURN TOWER ★ <b>123.875</b>	GND CON ★ <b>121.625</b>	CLNC DEL <b>118.7</b> (When twr closed)	UNICOM <b>123.0</b> (CTAF)
----------------------------	---	----------------------------------	-----------------------------	---	-------------------------------



4 NM Holding Pattern HESEL		3000 RIVME	
GP 3.00° TCH 44		* LNAV only	
185°		* 1.1 NM to RW36	
005°		RW36	
005°		2600	
2600		* 1660	
7 NM		2.9 NM	
A		B	
C		D	
CATEGORY	A	B	C
LPV DA		959-3/4	200 (200-3/4)
LNAV/VNAV DA		1060-7/8	301 (300-7/8)
LNAV MDA	1120-3/4	361 (400-3/4)	1120-7/8 361 (400-7/8)
<b>C</b> CIRCLING	1280-1 503 (600-1)	1360-1 583 (600-1)	1380-1 3/4 603 (700-1 3/4) 1480-2 1/4 703 (800-2 1/4)

