

LOC/DME I-RLU <b>110.5</b> Chan 42	APP CRS <b>047°</b>	Rwy Idg 5500 TDZE 309 Apt Elev 333
--	------------------------	---

# ILS or LOC/DME RWY 5

WATERVILLE RGNL (WVL)

**⚠** Night landing; Rwy 14 NA. Helicopter visibility reduction below 3/4 SM NA. VDP NA when using Augusta altimeter setting. When local altimeter setting not received, use Augusta altimeter setting and increase S-ILS 5 DA to 544 feet; increase all MDAs 40 feet and increase S-LOC 5 Cats C/D and Circling Cat D visibility 1/4 SM. Inop table does not apply to S-ILS 5. For inop MALSF, increase S-LOC 5 Cat D visibility to 1 mile. For inop MALSF, when using Augusta altimeter setting, increase S-ILS 5 all Cats visibility to 1/2 mile and S-LOC 5 Cat C/D visibility to 1 1/8 mile. Autopilot coupled approach NA below 600.

**MALSF**

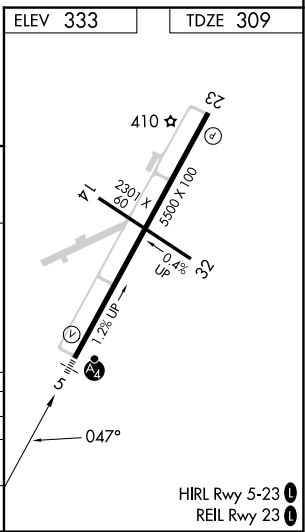
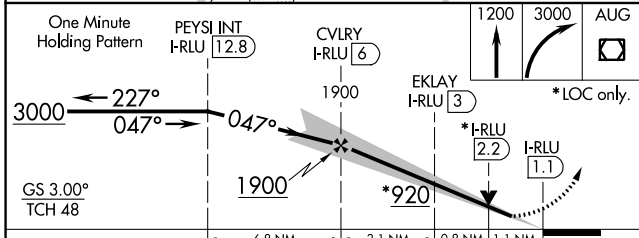
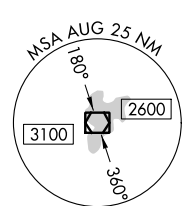
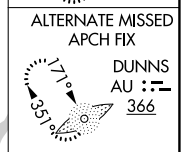
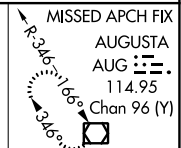
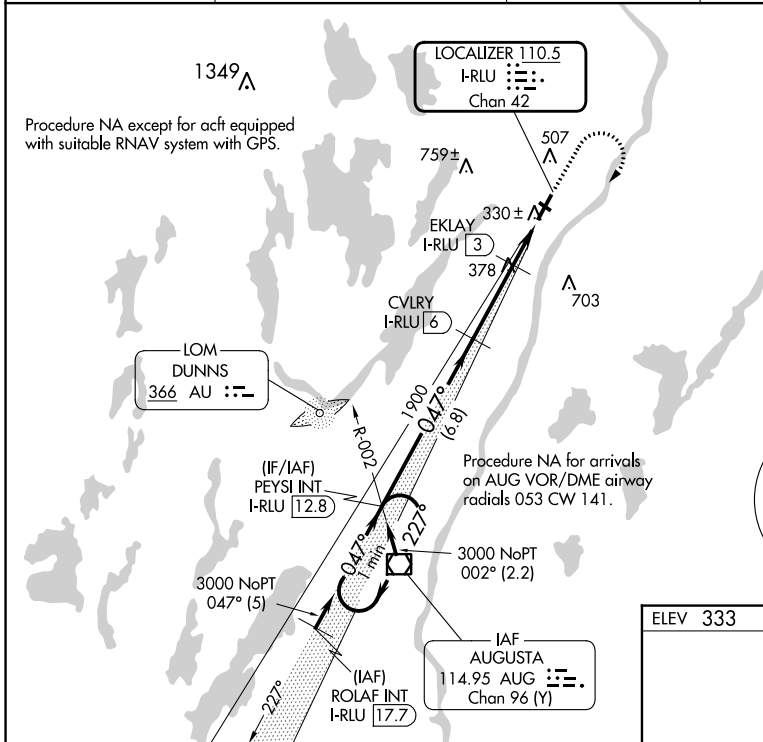
**MISSED APPROACH:**  
Climb to 1200 then climbing right turn to 3000 direct AUG VOR/DME and hold.

AWOS-3PT  
**118.375**

PORTLAND APP CON ★  
**128.35 299.2**

CLNC DEL  
**124.6 299.2**

UNICOM  
**122.7 (CTAF) 0**



CATEGORY	A	B	C	D
S-ILS 5		509-3/4	200 (200-3/4)	
S-LOC 5		680-3/4	371 (400-3/4)	
CIRCLING	860-1	527 (600-1)	1100-2 1/4 767 (800-2 1/4)	1120-2 1/2 787 (800-2 1/2)

NE-1, 26 DEC 2024 to 23 JAN 2025

NE-1, 26 DEC 2024 to 23 JAN 2025