

WAAS CH 56301	APP CRS 022°	Rwy Idg TDZE Apt Elev	5003 623 623
-------------------------	------------------------	-----------------------------	---

RNAV (GPS) RWY 2

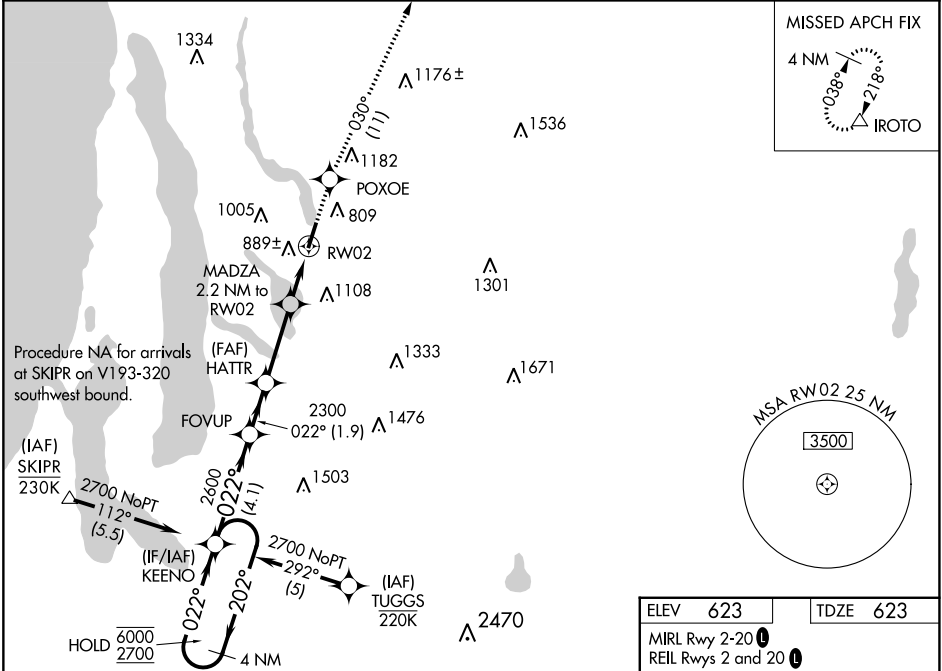
ANTRIM COUNTY (ACB)

RNP APCH-GPS.

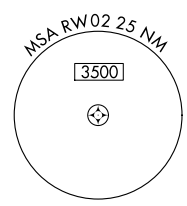
▼ Rwy 2 helicopter visibility reduction below 3/4 SM NA. For uncompensated Baro-VNAV systems, LNAV/VNAV NA below -16°C or above 54°C. Baro-VNAV and VDP NA when using TVC altimeter setting. When local altimeter setting not received, use TVC altimeter setting: increase LPV DA to 954 feet and all visibilities 1/8 SM; increase LNAV/VNAV DA to 1187 feet and all visibilities 1/4 SM; increase all MDAs 60 feet and LNAV visibility Cats C and D 1/4 SM, and Circling visibility Cats B and C 1/4 SM.

MISSED APPROACH:
Climb to 3000 direct POXOE and on track 030° to IROTO and hold.

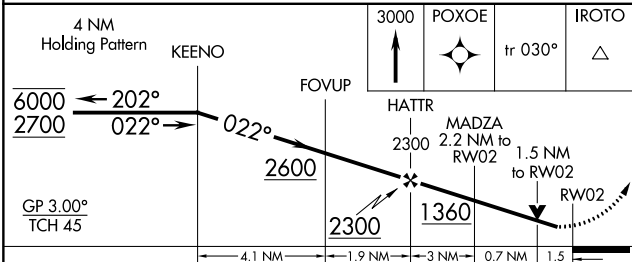
AWOS-3P 119.275	MINNEAPOLIS CENTER 132.9 338.3	UNICOM 122.7 (CTAF) 0
---------------------------	--	---------------------------------



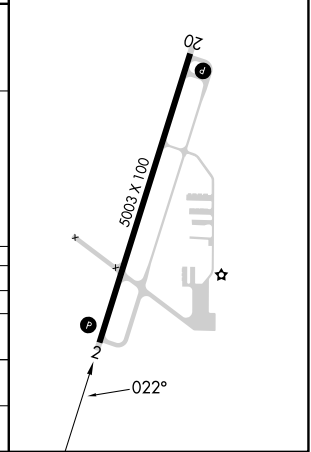
Procedure NA for arrivals at SKIPR on V193-320 southwest bound.



ELEV 623	TDZE 623
MIRL Rwy 2-20 0	REIL Rwys 2 and 20 0



CATEGORY	A	B	C	D
LPV DA	902-1		279 (300-1)	
LNAV/VNAV DA	1135-1 3/8		512 (600-1 1/8)	
LNAV MDA	1140-1	517 (600-1)	1140-1 3/8	517 (600-1 1/8)
CIRCLING	1360-1 737 (800-1)	1380-1 757 (800-1)	1560-2 3/4 937 (1000-2 3/4)	1640-3 1017 (1100-3)



EC-1, 26 DEC 2024 to 23 JAN 2025

EC-1, 26 DEC 2024 to 23 JAN 2025