

VORTAC MHz <b>113.2</b> Chan <b>79</b>	APP CRS <b>352°</b>	Rwy Idg TDZE <b>329</b> Apt Elev <b>346</b>
--	------------------------	---

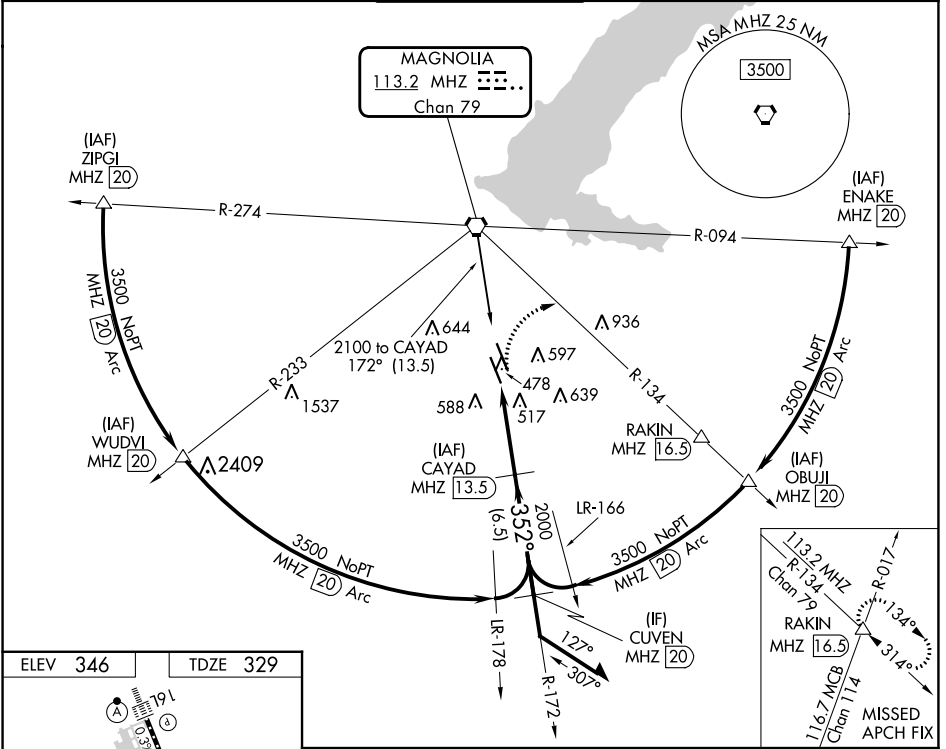
# VOR/DME or TACAN RWY 34L

JACKSON-MEDGAR WILEY EVERS INTL (JAN)

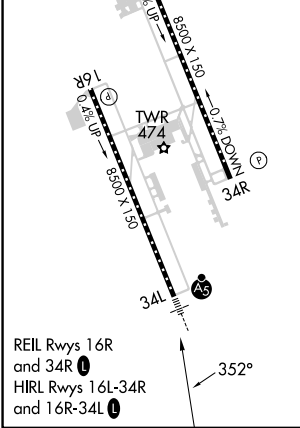
**⚠** When local altimeter setting not received, use Hawkins Fld altimeter setting and increase all MDA 20 feet; increase S-34L Cats C/D/E visibility 1/8 mile. Circling NA for Cat E southwest of Rwy 16R-34L. Helicopter visibility reduction below 3/4 SM NA.

**MALSR** MISSED APPROACH: Climbing right turn to 3000 on heading 120° and MHz VORTAC R-134 to RAKIN INT/ MHz 16.5 DME and hold.

ATIS <b>121.05</b>	JACKSON APP CON* <b>123.9 317.7</b>	JACKSON TOWER* <b>120.9 (CTAF) 352.0</b>	GND CON <b>121.7 348.6</b>	UNICOM <b>122.95</b>
-----------------------	--	---	-------------------------------	-------------------------



ELEV 346	TDZE 329
----------	----------



3000	hdg 120°	MHz R-134	RAKIN	△	CAYAD MHz 13.5	Remain within 15 NM
		MHz 9.9			172°	2100
		MHz 8.5			352°	2000
				≤3.05° TCH 55		
				1.4	3.6 NM	
CATEGORY	A	B	C	D	E	
S-34L	840/55	511 (500-1)	840-1 3/8 511 (500-1 3/8)			
<b>C</b> CIRCLING	880-1 534 (600-1)	900-1 554 (600-1)	900-1 1/2 554 (600-1 1/2)	960-2 614 (700-2)	1040-2 1/2 694 (700-2 1/2)	

SC-4, 26 DEC 2024 to 23 JAN 2025

SC-4, 26 DEC 2024 to 23 JAN 2025