

WAAS CH <b>56415</b> <b>W30A</b>	APP CRS <b>298°</b>	Rwy Idg TDZE Apt Elev	<b>5320</b> <b>919</b> <b>919</b>
--	------------------------	-----------------------------	---

# RNAV (GPS) RWY 30

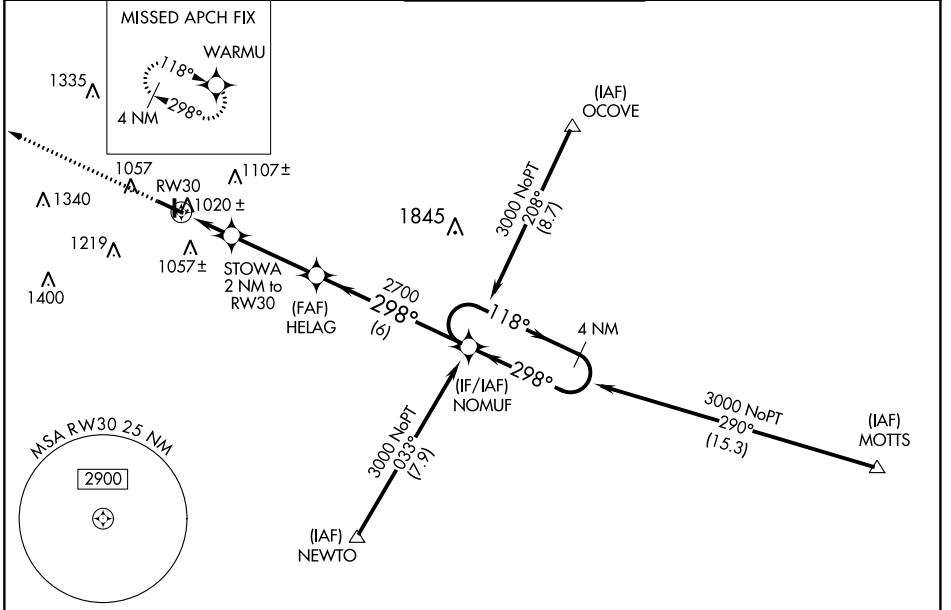
ANDERSON MUNI-DARLINGTON FLD (AID)

RNP APCH

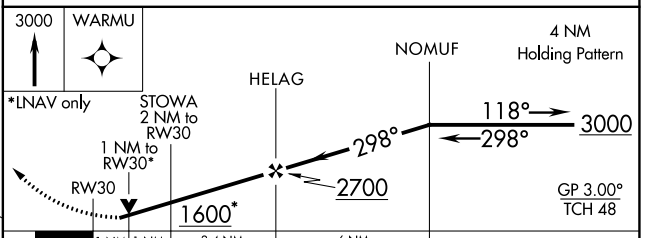
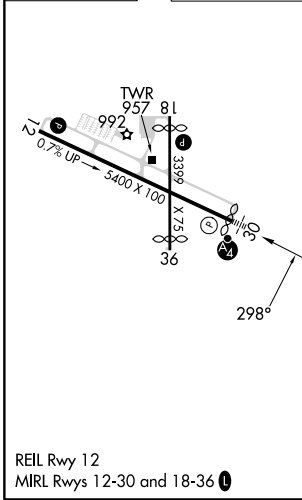
For uncompensated Baro-VNAV systems, LNAV/VNAV NA below -16°C (4°F) or above 47°C (116°F). When local altimeter setting not received, use Muncie altimeter setting and increase all DA 32 feet and all MDA 40 feet, and increase LPV and LNAV/VNAV all Cats and LNAV Cat C visibility ¼ mile. Inoperative table does not apply.  
Rwy 30 helicopter visibility reduction below ¾ SM NA.

MALSIF 	MISSED APPROACH: Climb to 3000 direct WARMU and hold.
------------	---

AWOS-3 <b>128.55</b>	INDIANAPOLIS APP CON <b>120.65 317.8</b>	ANDERSON TOWER * <b>126.0 (CTAF) 0</b>	GND CON <b>121.6</b>	UNICOM <b>122.95</b>
-------------------------	---	---	-------------------------	-------------------------



ELEV	919	TDZE	919
------	-----	------	-----



CATEGORY	A	B	C	D
LPV DA	1234-1		315 (400-1)	
LNAV/VNAV DA	1367-1½		448 (500-1½)	
LNAV MDA	1300-1		381 (400-1)	
CIRCLING	1360-1	1400-1	1520-1¾	1520-2
	441 (500-1)	481 (500-1)	601 (700-1¾)	601 (700-2)

EC-2, 26 DEC 2024 to 23 JAN 2025

EC-2, 26 DEC 2024 to 23 JAN 2025