

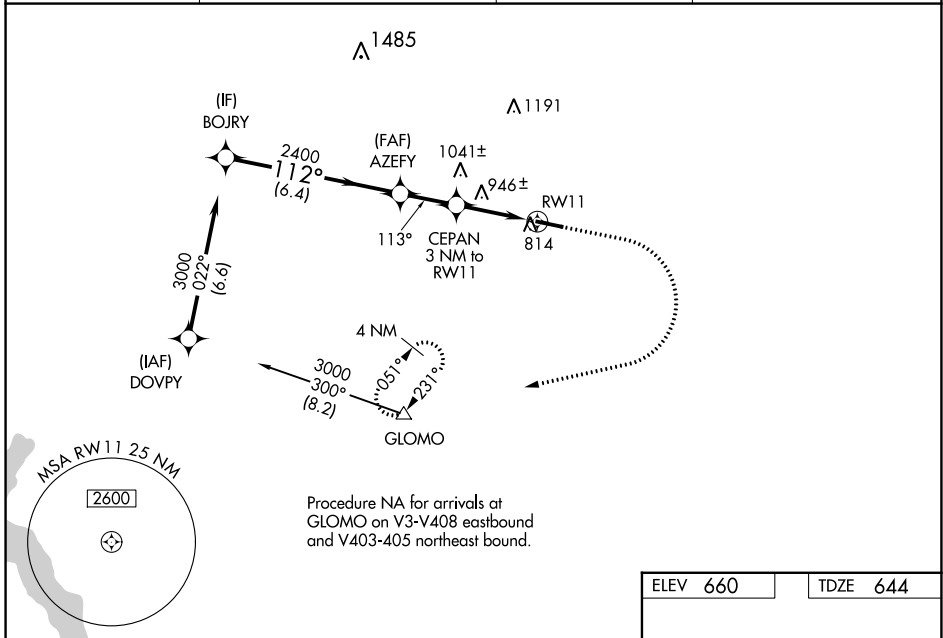
WAAS CH 63006 W11A	APP CRS 113°	Rwy Idg TDZE 644 Apt Elev 660	5400 644 660
--	------------------------	---	---

RNAV (GPS) RWY 11

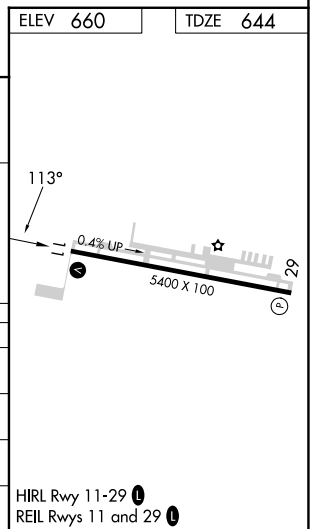
CHESTER COUNTY G O CARLSON (MQS)

RNP APCH - GPS.	<p>MISSED APPROACH: Climb to 1300 then climbing right turn to 3000 direct GLOMO and hold, continue climb-in-hold to 3000.</p>
<p>⚠ Helicopter visibility reduction below 3/4 SM NA. For uncompensated Baro-VNAV systems, LNAV/VNAV NA below -16°C or above 54°C.</p>	

AWOS-3 126.25	PHILADELPHIA APP CON 124.35 319.15	CLNC DEL 125.6	UNICOM 122.7 (CTAF) 0
-------------------------	--	--------------------------	---------------------------------



VGS1 and RNAV glidepath not coincident (VGS1 Angle 3.00/TCH 52).				
BOJRY	AZEFY	CEPAN 3 NM to RW11	GLOMO	
3000	2400	1700	1300	3000
GP 3.20° TCH 55	112°	113°	113°	113°
6.4 NM	2.1 NM	1.4 NM	1.6 NM	
CATEGORY	A	B	C	D
LPV DA	973-1		329 (400-1)	
LNAV/VNAV DA	1091-1 3/8		447 (500-1 3/8)	
LNAV MDA	1200-1	556 (600-1)	1200-1 3/8	556 (600-1 3/8)
CIRCLING	1200-1 540 (600-1)	1240-1 580 (600-1)	1260-1 3/8 600 (600-1 3/8)	1420-2 1/2 760 (800-2 1/2)



NE-4, 26 DEC 2024 to 23 JAN 2025

NE-4, 26 DEC 2024 to 23 JAN 2025