

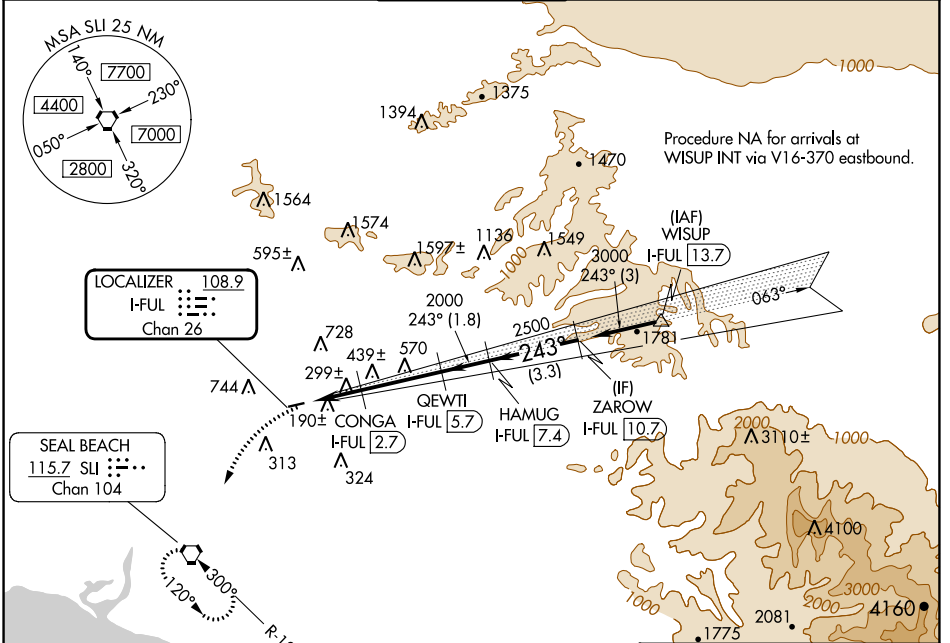
LOC/DME I-FUL 108.9 Chan 26	APP CRS 243°	Rwy Idg 2868 TDZE 95 Apt Elev 96
---	------------------------	---

LOC/DME RWY 24

FULLERTON MUNI (F'UL)

<p>▼ Inoperative table does not apply. ▲ Night landing: Rwy 6 NA. Helicopter visibility reduction below 1 SM NA.</p>	MISSED APPROACH: Climbing left turn to 2600 direct SLI VORTAC and hold.
--	---

ATIS 125.05	SOCAL APP CON 125.35 316.125	FULLERTON TOWER* 119.1 (CTAF) 0	GND CON 121.8	UNICOM 122.95
-----------------------	--	--	-------------------------	-------------------------



SW-3, 26 DEC 2024 to 23 JAN 2025

SW-3, 26 DEC 2024 to 23 JAN 2025

	VGSI and descent angles not coincident (VGSI Angle 4.00/TCH 33).		ZAROW I-FUL 10.7	
	CONGA I-FUL 2.7	QEWTL I-FUL 5.7	HAMUG I-FUL 7.4	Procedure Turn NA
I-FUL 0.5	$\leq 3.45^\circ$ TCH 33	2000	2500	3000
2600	2.2 NM	2.9 NM	1.8 NM	3.3 NM
CATEGORY	A	B	C	D
S-24	560-1	465 (500-1)		NA
CIRCLING	760-1 664 (700-1)	1060-1½ 964 (1000-1½)		NA

