

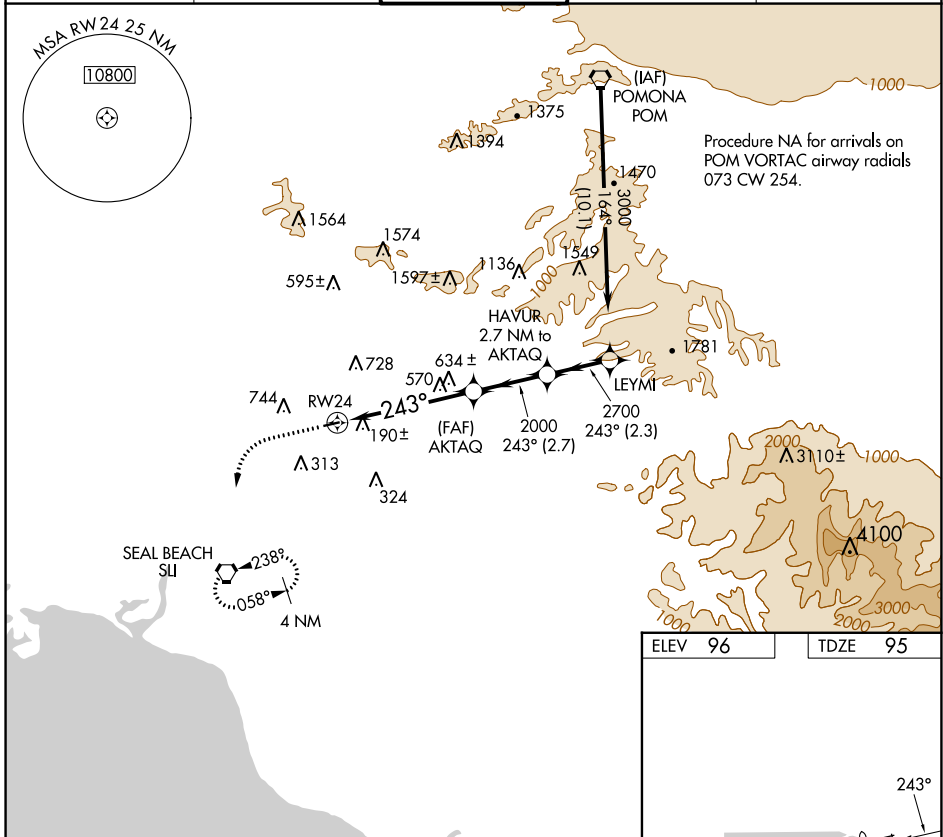
APP CRS	Rwy Idg	2868
243°	TDZE	95
	Apt Elev	96

RNAV (GPS) RWY 24

FULLERTON MUNI (F'UL)

RNP APCH.	MISSED APPROACH: Climb to 1300, then climbing left turn to 2600 direct SLI VORTAC and hold.
<p>▼ Inoperative table does not apply.</p> <p>▲ NA Helicopter visibility reduction below 1 SM NA.</p>	

ATIS 125.05	SOCAL APP CON 125.35 316.125	FULLERTON TOWER ★ 119.1 (CTAF) 0	GND CON 121.8	UNICOM 122.95
-----------------------	--	---	-------------------------	-------------------------



1300	2600	SLI			
VGSIs and descent angles not coincident (VGSIs Angle 4.00/TCH 33).					
RWY 24		AKTAQ	HAVUR 2.7 NM to AKTAQ	LEYMI	Procedure Turn NA
5 NM		2.7 NM	2.3 NM		
CATEGORY	A	B	C	D	
LNAV MDA	900-1 805 (900-1)	900-1¼ 805 (900-1¼)		NA	

ELEV 96	TDZE 95
MIRL Rwy 6-24 0	
REIL Rwy 6 and 24 0	

SW-3, 26 DEC 2024 to 23 JAN 2025

SW-3, 26 DEC 2024 to 23 JAN 2025