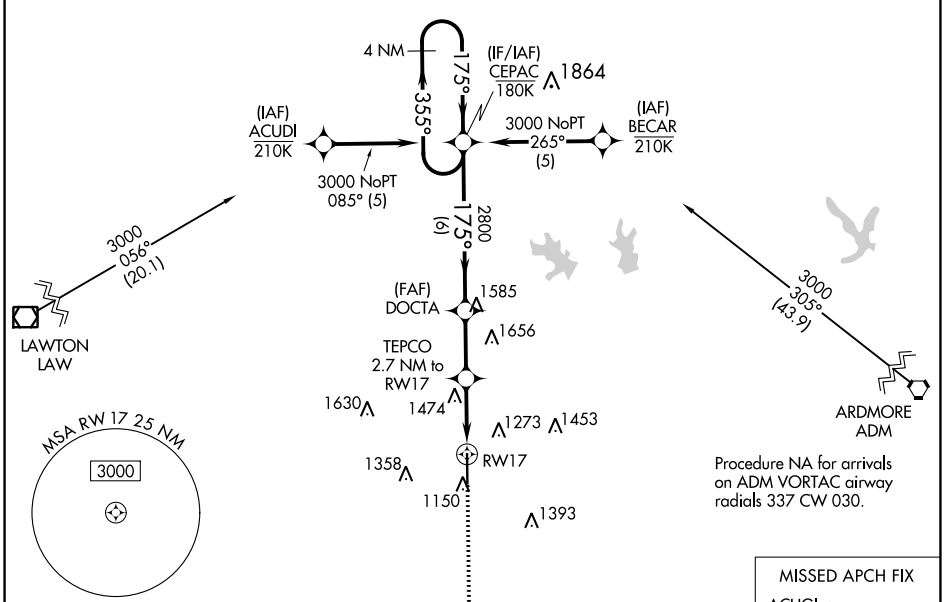


WAAS CH <b>93619</b> <b>W17A</b>	APP CRS <b>175°</b>	Rwy Idg <b>6325</b> TDZE <b>1114</b> Apt Elev <b>1114</b>
--	------------------------	---

# RNAV (GPS) RWY 17

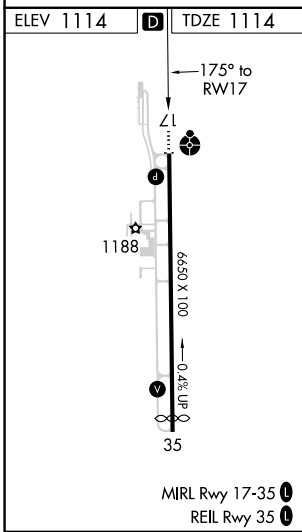
HALLIBURTON FLD (DUC)

<b>RNP APCH.</b> For uncompensated Baro-VNAV systems, LNAV/VNAV NA below -17°C or above 54°C. Inop table does not apply to LPV all Cats, LNAV/VNAV all Cats, LNAV Cats C/D.		<b>ODALS</b> 	<b>MISSED APPROACH:</b> Climb to 3000 direct ACUGI and hold.
AWOS-3 <b>119.075</b>	FORT SILL APP CON <b>118.6 290.375</b>	CLNC DEL <b>118.4</b>	UNICOM <b>122.8 (CTAF) 0</b>



SC-1, 26 DEC 2024 to 23 JAN 2025

SC-1, 26 DEC 2024 to 23 JAN 2025



MISSED APCH FIX ACUGI 				
3000 ACUGI 	CEPAC 4 NM Holding Pattern 			
*LNAV only. RWY 17 *1.8 NM to RWY 17 TEPCO 2.7 NM to RWY 17 DOCTA 2800 *2020 GP 3.00° TCH 53	RWY 17 TEPCO 2.7 NM to RWY 17 DOCTA 2800 CEPAC 4 NM Holding Pattern 355° → 3000 ← 175°			
CATEGORY LPV DA LNAV/VNAV DA LNAV MDA CIRCLING	A 1314-3/4 1806-2 1/2 1740-3/4 626 (700-1)	B 200 (200-3/4) 692 (700-2/2) 626 (700-3/4) 626 (700-1)	C 1740-1 3/4 666 (700-1 3/4)	D 1780-2 666 (700-2)