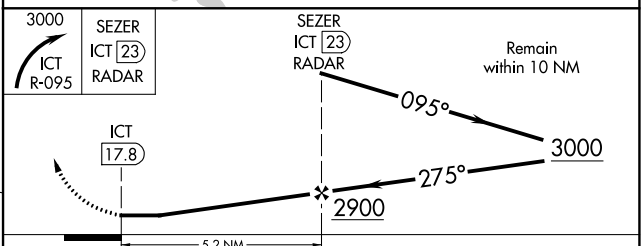
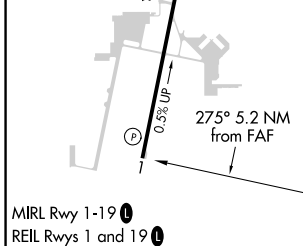
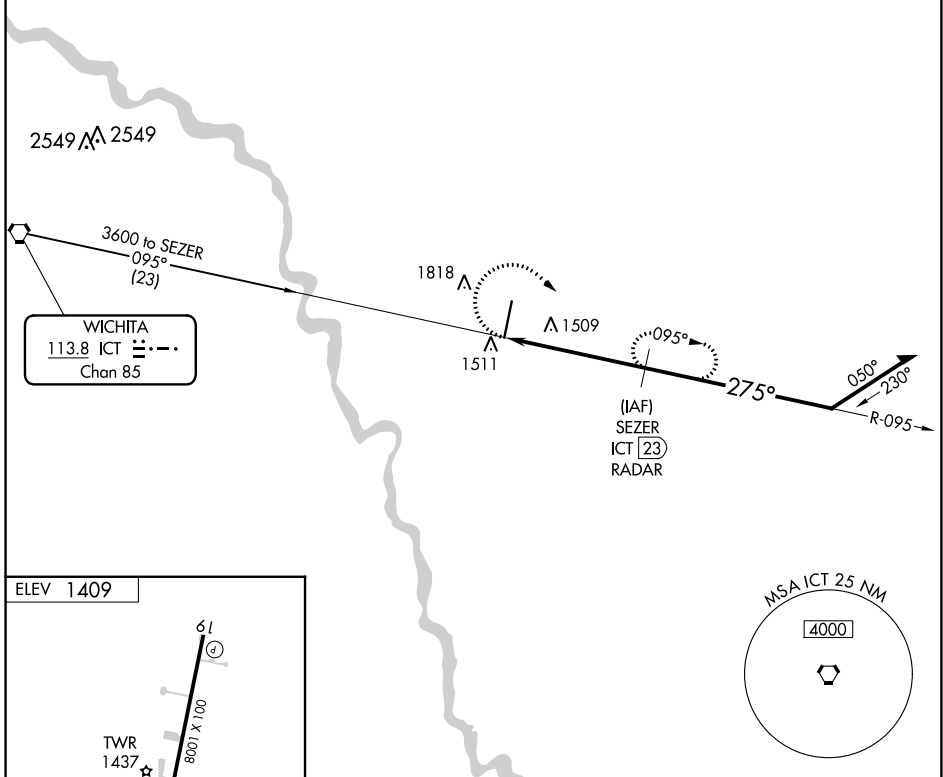


VORTAC ICT 113.8 Chan 85	APP CRS 275°	Rwy Idg TDZE Apt Elev 1409	N/A N/A 1409
--	------------------------	--	---

VOR-B
BEECH FACTORY (B.E.C)

<p>NA Obtain local altimeter setting on CTAF; when not received, use Wichita Dwight D Eisenhower NH altimeter setting and increase all MDA 40 feet and increase Cat C and D visibility 1/4 mile.</p>		<p>MISSED APPROACH: Climbing right turn to 3000 on ICT VORTAC R-095 to SEZER/ICT 23 DME/RADAR and hold.</p>				
AWOS-3PT 119.45	WICHITA APP CON 134.8 269.1	BEECH TOWER ★ 126.8 (CTAF) 0 313.6		GND CON 121.7	CLNC DEL 125.0 (When tower closed)	UNICOM 122.95

RADAR or DME REQUIRED



FAF to MAP 5.2 NM					
Knots	60	90	120	150	180
Min:Sec	5:12	3:28	2:36	2:05	1:44
CATEGORY	A	B	C	D	
CIRCLING	1840-1 431 (500-1)	2120-1 711 (800-1)	2120-2 711 (800-2)	2120-2 1/4 711 (800-2 1/4)	

NC-2, 26 DEC 2024 to 23 JAN 2025

NC-2, 26 DEC 2024 to 23 JAN 2025