

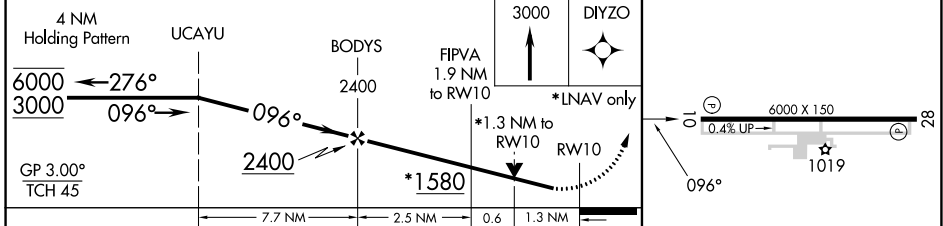
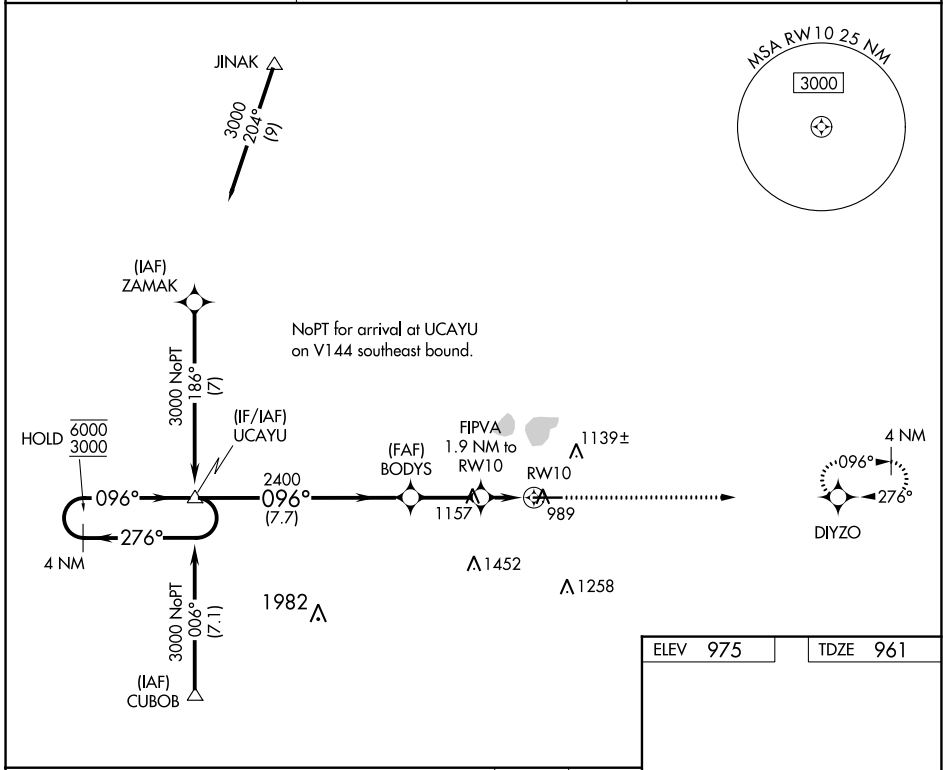
WAAS CH <b>65816</b> <b>W10A</b>	APP CRS <b>096°</b>	Rwy Idg TDZE Apt Elev	<b>6000</b> <b>961</b> <b>975</b>
--	------------------------	-----------------------------	---

# RNAV (GPS) RWY 10

LIMA ALLEN COUNTY (AOH)

RNP APCH.	MISSED APPROACH: Climb to 3000 direct DIYZO and hold.
<p><b>▼</b> Rwy 10 helicopter visibility reduction below 3/4 SM NA. For uncompensated Baro-VNAV systems, LNAV/VNAV NA below -16°C or above 54°C.</p> <p><b>▲</b></p>	

ASOS <b>128.725</b>	COLUMBUS APP CON <b>121.825 323.15</b>	UNICOM <b>122.7 (CTAF) 0</b>
------------------------	---	---------------------------------



ELEV 975		TDZE 961	
CATEGORY	A	B	D
LPV DA	1211-1 250 (300-1)		
LNAV/VNAV DA	1272-1 311 (300-1)		
LNAV MDA	1420-1 459 (500-1)	1420-1 3/8 459 (500-1 3/8)	