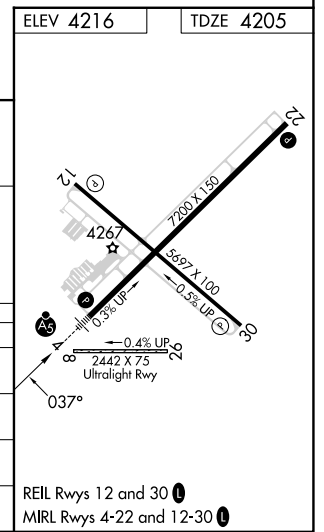
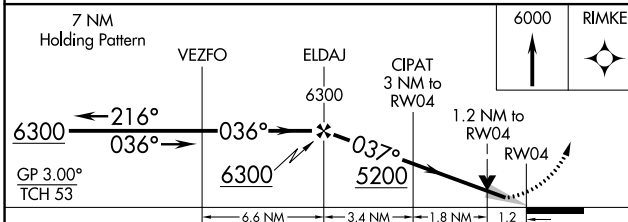
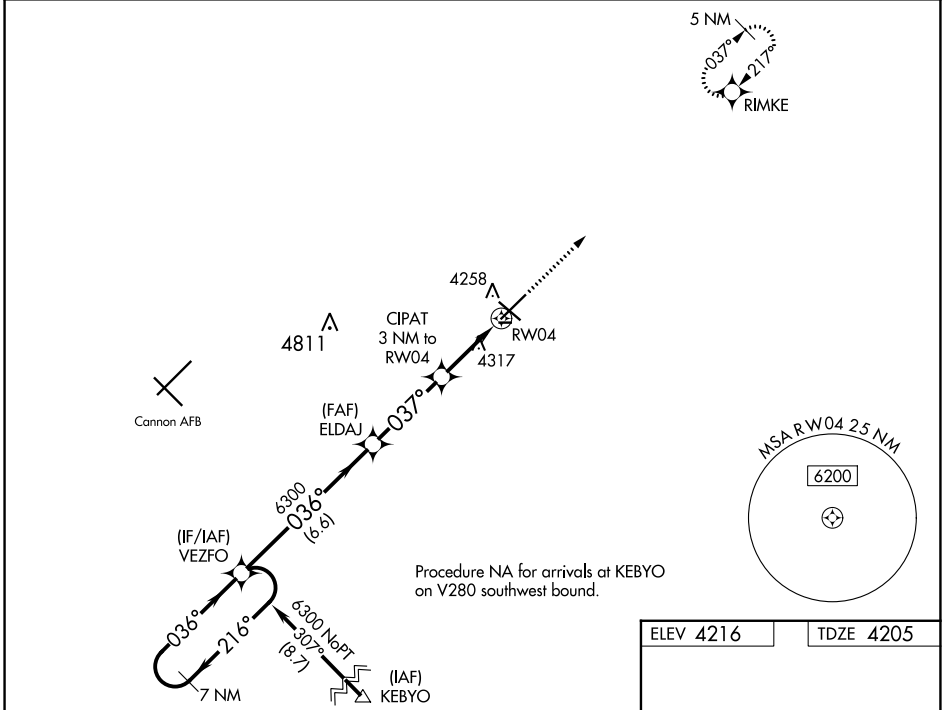


WAAS CH 97300 W04A	APP CRS 037°	Rwy Idg 7200 TDZE 4205 Apt Elev 4216
--	------------------------	---

RNAV (GPS) RWY 4

CLOVIS RGNL (CVN)

RNP APCH - GPS.		MALSRL	MISSED APPROACH: Climb to 6000 direct RIMKE and hold.
<p>▼ For uncompensated Baro-VNAV systems, LNAV/VNAV NA below -23°C or above 49°C. For inop ALS, increase LNAV/VNAV all Cats visibility to ¾ SM. Circling NA to Rwy 8 and 26.</p>			
AWOS-3PT 135.375	CANNON APP CON 118.425 352.1	CLNC DEL 119.0	UNICOM 122.8 (CTAF) 0



SW-1, 26 DEC 2024 to 23 JAN 2025

SW-1, 26 DEC 2024 to 23 JAN 2025