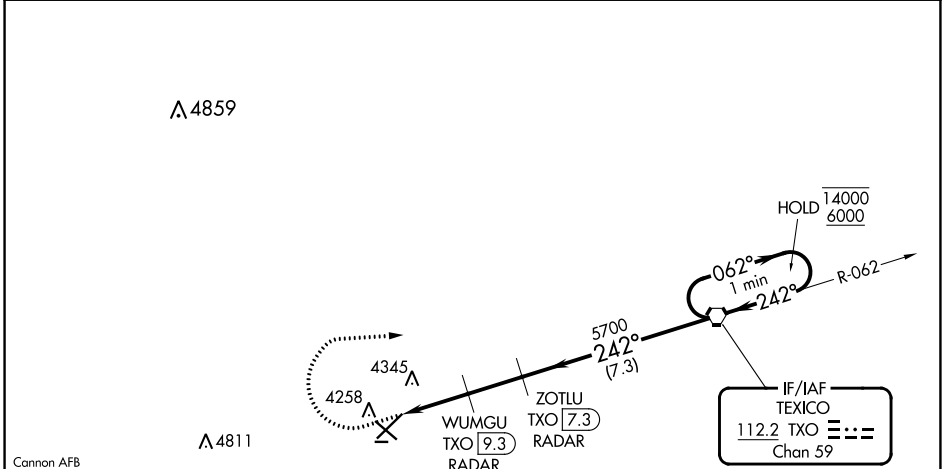


VORTAC TXO <b>112.2</b> Chan <b>59</b>	APP CRS <b>242°</b>	Rwy Idg TDZE Apt Elev <b>7200</b> <b>4214</b> <b>4216</b>
--	------------------------	--

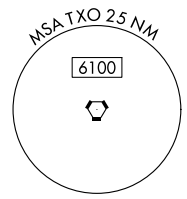
# VOR RWY 22

CLOVIS RGNL (CVN)

DME or RADAR required.		MISSED APPROACH: Climb to 4700 then climbing right turn to 6000 direct TXO VORTAC and hold.	
Circling NA to Rwy 8 and 26.		CLNC DEL <b>119.0</b>	UNICOM <b>122.8 (CTAF) 0</b>
AWOS-3PT <b>135.375</b>	CANNON APP CON <b>118.425 352.1</b>		



NoPT for arrival on TXO VORTAC  
airway radials 040 CW 124.



ELEV 4216	TDZE 4214
-----------	-----------

REIL Rwy 12 and 30 **0**  
MIRL Rwy 4-22 and 12-30 **0**  
FAF to MAP 4.5 NM

Knots	60	90	120	150	180
Min:Sec	4:32	3:01	2:16	1:49	1:31

4700	6000	TXO	TXO VORTAC	
WUMGU TXO 9.3 RADAR		ZOTLU TXO 7.3 RADAR	One Minute Holding Pattern	
TXO 10.8		5040	5700	14000
1.1 NM		1.4 NM	2 NM	7.3 NM
CATEGORY	A	B	C	D
S-22	4600-1	386 (400-1)	4600-1½	386 (400-1½)
CIRCLING	4680-1	464 (500-1)	4700-1½	4820-2
			484 (500-1½)	604 (700-2)

SW-1, 26 DEC 2024 to 23 JAN 2025

SW-1, 26 DEC 2024 to 23 JAN 2025