

WAAS CH 82625 W18A	APP CRS 177°	Rwy Idg TDZE Apt Elev	5904 3125 3125
--	------------------------	-----------------------------	---

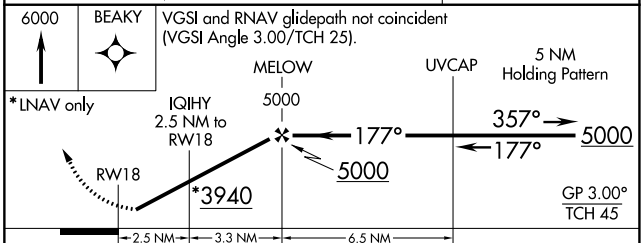
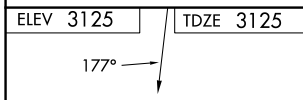
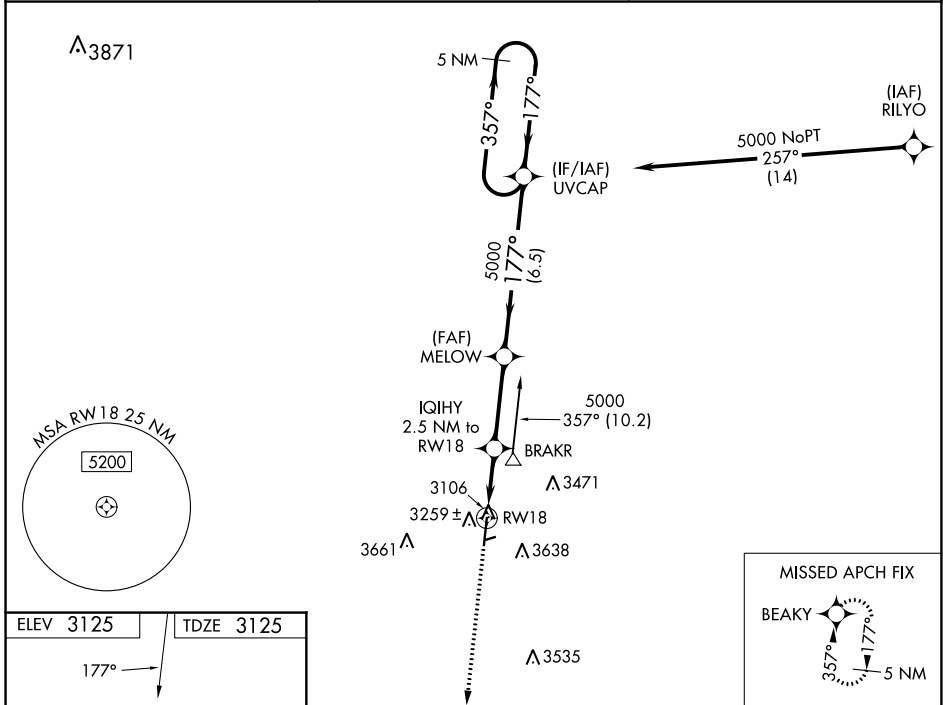
RNAV (GPS) RWY 18

GUYMON MUNI (GUY)

⚠ Baro-VNAV NA when using Liberal altimeter setting. For uncompensated Baro-VNAV systems, LNAV/VNAV NA below -21°C (-5°F) or above 54°C (130°F). Circling NA east of Rwy 18-36. DME/DME RNP-0.3 NA. When local altimeter setting not received, use Liberal altimeter setting: increase LPV DA to 3488 feet; increase LNAV/VNAV DA to 3564 feet and all visibilities ½ SM; increase all MDAs 120 feet and visibility Cat C ½ SM. Circling NA to Rwy 6 and 24.

ODALS
 MISSED APPROACH: Climb to 6000 direct BEAKY and hold.

ASOS 119.925	KANSAS CITY CENTER 134.0 257.625	UNICOM 122.7 (CTAF) 0
------------------------	--	---------------------------------



CATEGORY	A	B	C	D
LPV DA		3375-1	250 (300-1)	NA
LNAV/VNAV DA		3451-1	326 (400-1)	NA
LNAV MDA		3520-1	395 (400-1)	NA
CIRCLING	3580-1	455 (500-1)	3980-2½ 855 (900-2½)	NA

SC-1, 26 DEC 2024 to 23 JAN 2025

SC-1, 26 DEC 2024 to 23 JAN 2025