

| | | |
|--|------------------------|---|
| WAAS CH 90108 W17A | APP CRS 174° | Rwy Idg 7401 TDZE 1000 Apt Elev 1000 |
|--|------------------------|---|

RNAV (GPS) RWY 17

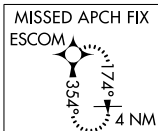
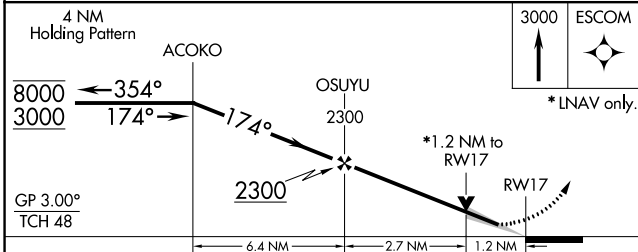
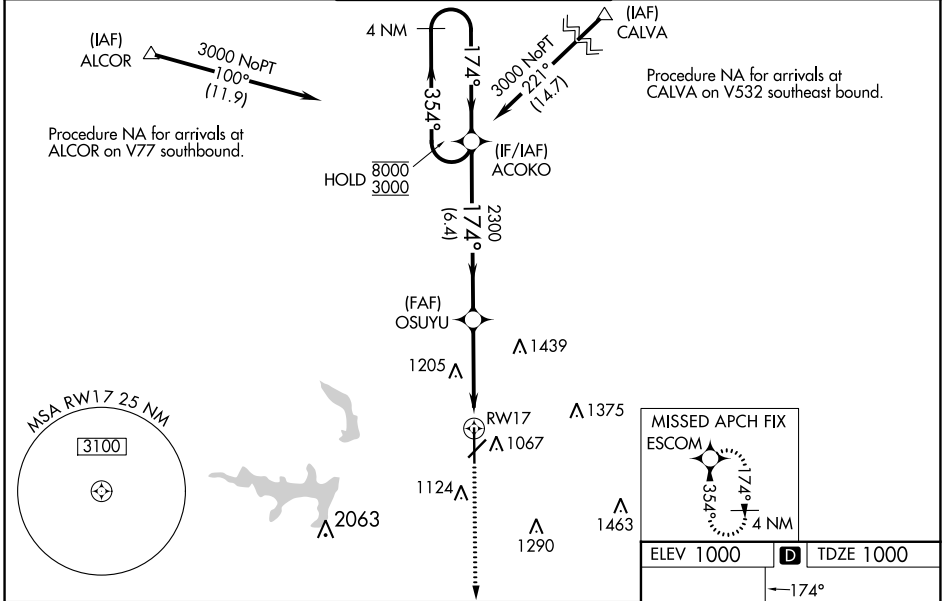
STILLWATER RGNL (SWO)

RNP APCH - GPS.

⚠ For uncompensated Baro-VNAV systems, LNAV/VNAV NA below -15°C or above 54°C. VDP and Baro-VNAV NA when using Ponca City altimeter setting. For inop ALS when using Ponca City altimeter setting, increase LPV visibility to ¾ SM, LNAV/VNAV visibility to 1 SM, and LNAV Cats C and D visibility to 1 ¾ SM. When local altimeter setting not received, use Ponca City altimeter setting: increase LPV DA to 1280 feet; increase LNAV/VNAV DA to 1359 feet and all visibilities ½ SM; increase all MDA 80 feet and visibility LNAV Cats C and D ¼ SM and Circling Cat D ½ SM. For inop ALS, increase LNAV/VNAV visibility to ¾ SM.

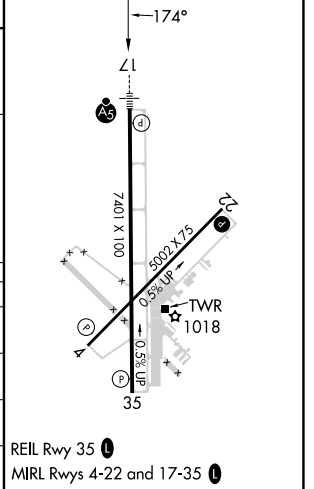
MALS MISSED APPROACH: Climb to 3000 direct ESCOM and hold.

| | | | | |
|------------------------|--|--|-------------------------|-------------------------|
| ASOS 135.725 | KANSAS CITY CENTER 127.8 319.1 | STILLWATER TOWER ★ 125.35 (CTAF) 0 | GND CON 121.6 | UNICOM 122.95 |
|------------------------|--|--|-------------------------|-------------------------|



| | |
|-----------|--------------------|
| ELEV 1000 | D TDZE 1000 |
|-----------|--------------------|

| CATEGORY | A | B | C | D |
|-------------------|-----------------------|-----------------------|-------------------------|-------------------------|
| LPV DA | | 1200-½ | 200 (200-½) | |
| LNAV/VNAV DA | | 1279-½ | 279 (300-½) | |
| LNAV MDA | 1440-½ | 440 (500-½) | 1440-¾ | 440 (500-¾) |
| C CIRCLING | 1440-1 440 (500-1) | 1460-1 460 (500-1) | 1520-1½ 520 (600-1½) | 1740-2¼ 740 (800-2¼) |



SC-1, 26 DEC 2024 to 23 JAN 2025

SC-1, 26 DEC 2024 to 23 JAN 2025