

RNAV (GPS) RWY 13

APCH CRS	Rwy Idg	9999
135°	TDZE	10
	Arpt Elev	10

[USAF]

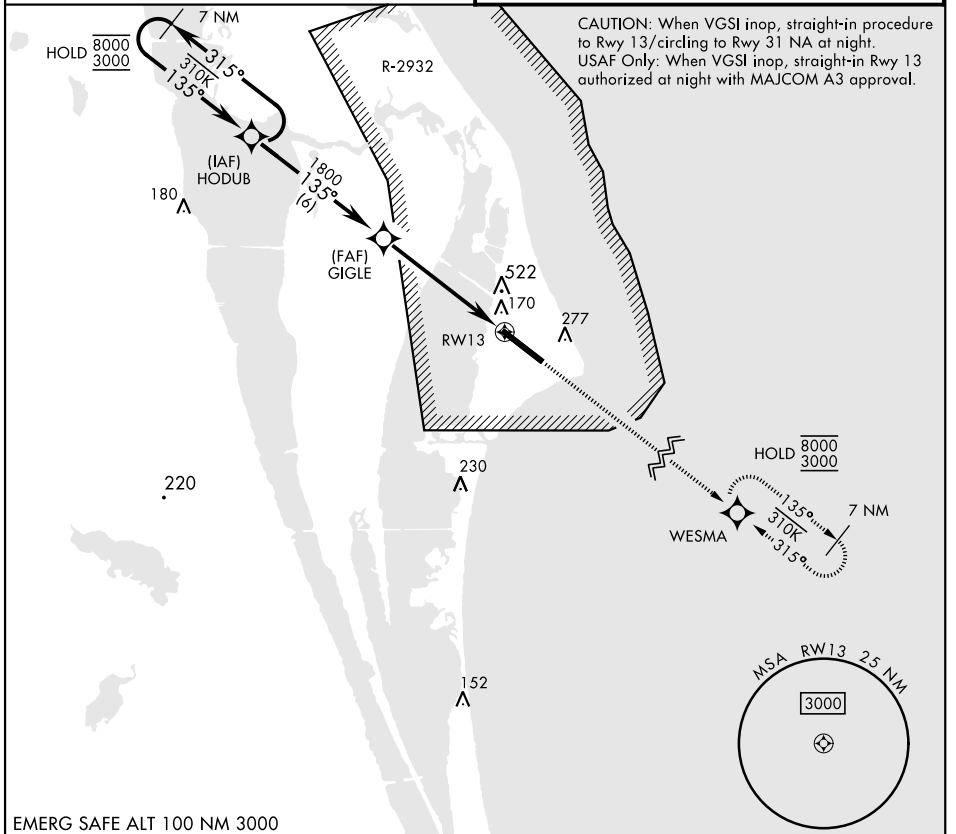
CAPE CANAVERAL SFS SKID STRIP (KXMR)

DME/DME RNP-0.3 NA.
 *Circling not authorized NE of Rwy 13-31.

MISSED APPROACH: Climb to 3000 direct WESMA and hold.

ORLANDO APP CON
 134.95 281.425

CAPE TOWER ★
 118.625 143.15 239.05



EMERG SAFE ALT 100 NM 3000

7 NM Holding Pattern HODUB 8000 / 3000 315° / 135° / 3000	3000 WESMA 135° TWR 8000 / 3000 7 NM 135° / 310° / 315°	ELEV	10	TDZE	10
		MSA RWY 13 2.5 NM 3000			
HODUB → 135° → GIGLE (1800) → 135° → RWY 13 (2.94° TCH 75)		235 A			
CATEGORY	A	B	C	D	E
LNAV MDA	540-1	530 (600-1)	540-1½	530 (600-1½)	
CIRCLING *	580-1	570 (600-1)	600-1½ 590 (600-1½)	620-2 610 (700-2)	640-2¼ 630 (700-2¼)

HIRL Rwy 13-31

RNAV (GPS) RWY 13

SE-3, 26 DEC 2024 to 23 JAN 2025

SE-3, 26 DEC 2024 to 23 JAN 2025