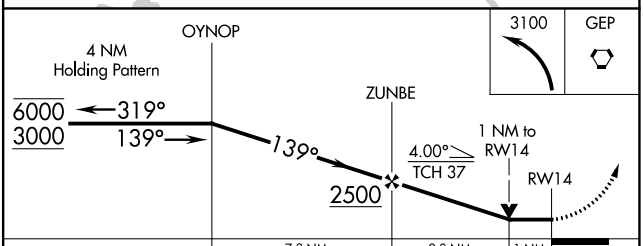
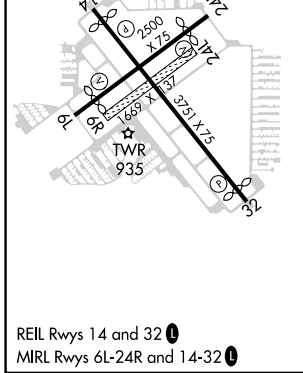
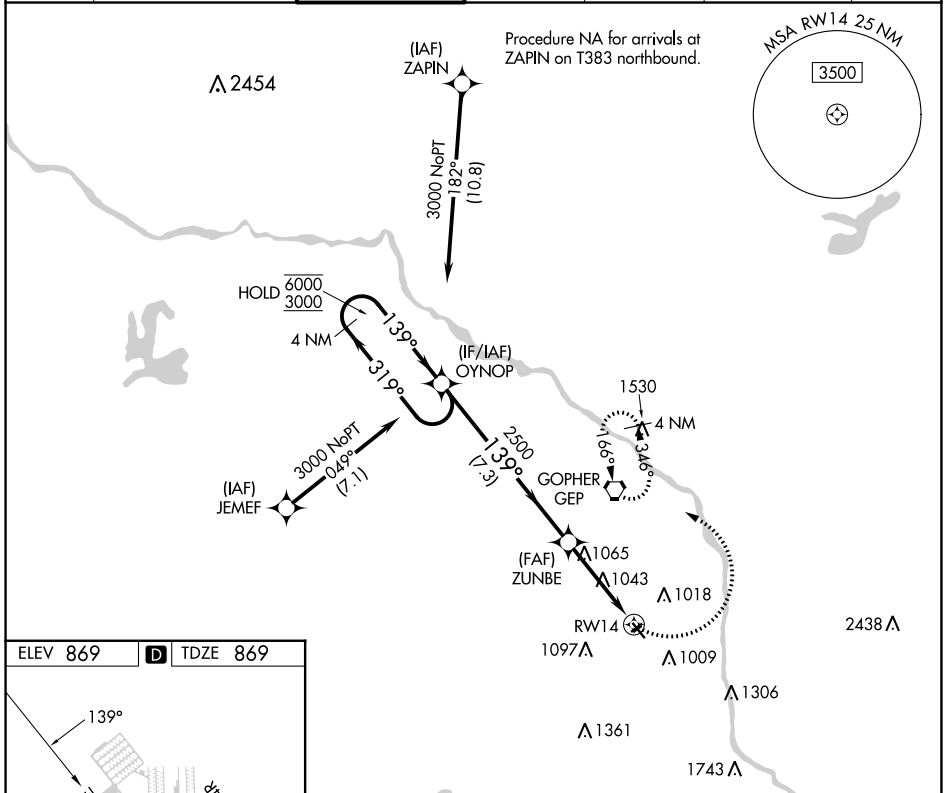


APP CRS	Rwy Idg	<b>3508</b>
<b>139°</b>	TDZE	<b>869</b>
	Apt Elev	<b>869</b>

# RNAV (GPS) RWY 14

CRYSTAL (MIC)

RNP APCH.		MISSED APPROACH: Climbing left turn to 3100 direct GEP VORTAC and hold, continue climb-in-hold to 3100.				
<p><b>∇</b> Circling NA to Rwy 6R and 24L.</p> <p><b>⚠</b> Rwy 14 helicopter visibility reduction below 3/4 SM NA.</p>						
ATIS	MINNEAPOLIS APP CON	CRYSTAL TOWER ★	GND CON	CLNC DEL	CLNC DEL	UNICOM
<b>124.475</b>	<b>126.5 335.65</b>	<b>120.7 (CTAF) 0</b>	<b>121.6</b>	<b>121.6</b>	<b>121.6</b> (When twr closed)	<b>122.95</b>



CATEGORY	A	B	C	D
LNAV MDA	1320-1	451 (500-1)	NA	
<b>C</b> CIRCLING	1340-1	1360-1	NA	
	471 (500-1)	491 (500-1)		

NC-1, 26 DEC 2024 to 23 JAN 2025

NC-1, 26 DEC 2024 to 23 JAN 2025