


LOC I-JAE <b>111.75</b>	APP CRS <b>130°</b>	Rwy Idg <b>6758</b> TDZE <b>1354</b> Apr Elev <b>1354</b>
----------------------------	------------------------	--

# ILS or LOC RWY 13


RANGE RGNL (HIB)

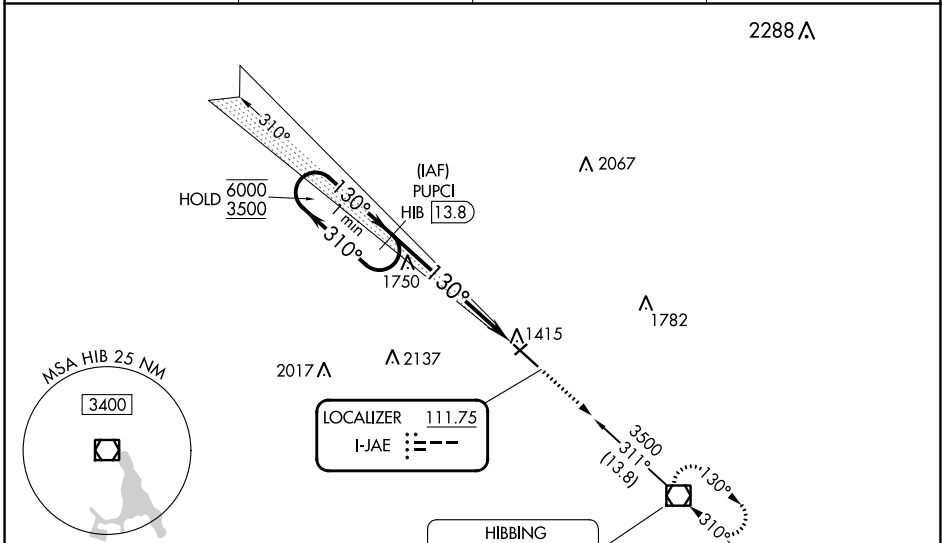
DME required.

**⚠** Autopilot coupled approach NA below 2515. VDP NA when using Eveleth altimeter setting. Caution opposing ILS continuously on. When local altimeter setting not received, use Eveleth altimeter setting and increase S-ILS 13 DA to 1590 feet; increase all MDAs 40 feet and S-LOC 13 visibility Cat B/C/D ¼ SM, and Circling visibility Cat B/C/D ¼ SM. For inop ALS, increase S-LOC 13 Cat C/D visibility to 2 SM. For inop ALS when using Eveleth altimeter setting, increase S-LOC 13 Cat C/D visibility to 2 SM.

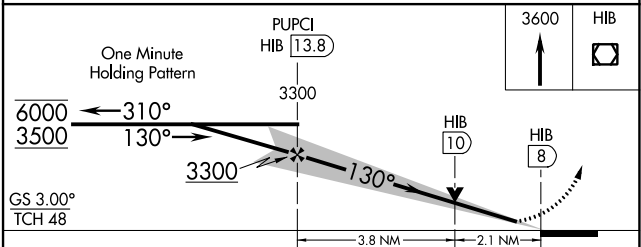
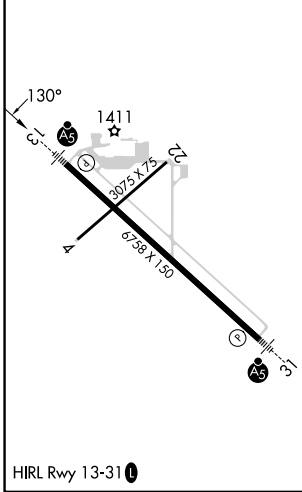
MALSR 

MISSED APPROACH: Climb to 3600 direct HIB VOR/DME and hold.

ASOS <b>126.425</b>	DULUTH APP CON <b>125.45 233.7</b>	CLNC DEL <b>127.4</b>	UNICOM <b>123.0 (CTAF)</b> 
------------------------	---------------------------------------	--------------------------	---



ELEV 1354	<b>D</b>	TDZE 1354
-----------	----------	-----------



CATEGORY	A	B	C	D
S-ILS 13	1554-½ 200 (200-½)			
S-LOC 13	2060-½ 706 (800-½)	2060-1½ 706 (800-1½)		
CIRCLING	2060-1 706 (800-1)	2060-2 706 (800-2)	2060-2¼ 706 (800-2¼)	

NC-1, 26 DEC 2024 to 23 JAN 2025

NC-1, 26 DEC 2024 to 23 JAN 2025