

WAAS Ch <b>70312</b> <b>W18A</b>	APP CRS <b>183°</b>	Rwy Idg <b>4939</b> TDZE <b>1351</b> Apt Elev <b>1353</b>
--	------------------------	---

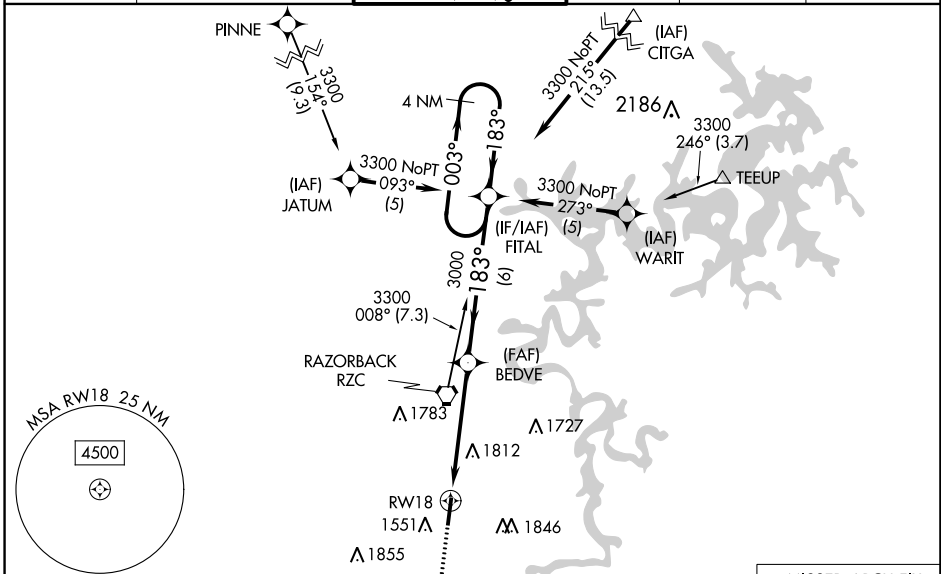
# RNAV (GPS) RWY 18

SPRINGDALE MUNI (ASG)

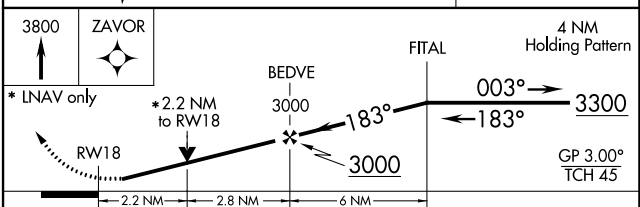
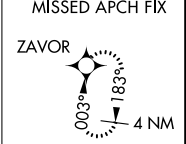
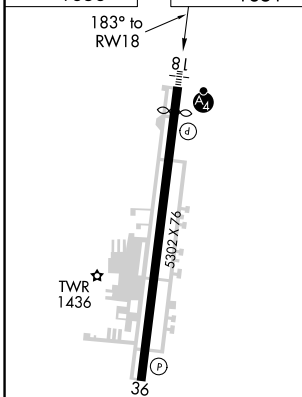
**NA** DME/DME RNP-0.3 NA. Circling NA east of Rwy 18-36. When local altimeter setting not received, use Fayetteville/Drake Fld altimeter setting and increase all DA 39 feet and all MDA 40 feet; increase LPV all Cats and LNAV Cat C/D visibility 1/8 mile, Circling Cat C/D visibility 1/4 mile. For inoperative MALSf, increase LPV all Cats visibility to 1 mile, LNAV Cat C/D visibility to 2 miles. For inoperative MALSf when using Fayetteville/Drake Fld altimeter setting, increase LPV all Cats visibility to 1 1/8 mile, LNAV Cat C visibility to 2 1/4 mile. VDP NA when using Fayetteville/Drake Fld altimeter setting. Helicopter visibility reduction below 3/4 SM NA.

MALSf 	MISSED APPROACH: Climb to 3800 direct ZAVOR and hold.
-----------	--

AWOS-3 <b>124.675</b>	RAZORBACK APP CON * <b>126.6 305.2</b>	SPRINGDALE TOWER * <b>118.2 (CTAF)</b>	GND CON <b>121.6</b>	REIL 18, 36 <b>122.8</b>	UNICOM <b>122.95</b>
--------------------------	---	---	-------------------------	-----------------------------	-------------------------



ELEV <b>1353</b>	TDZE <b>1351</b>
------------------	------------------



CATEGORY	A	B	C	D
LPV DA		1642-3/4 291 (300-3/4)		
LNAV/VNAV DA		NA		
LNAV MDA	2080-3/4 729 (800-3/4)	2080-1 729 (800-1)	2080-17/8 729 (800-17/8)	2220-23/4 867 (900-23/4)
<b>C</b> CIRCLING	2080-1 727 (800-1)		2080-2 727 (800-2)	

REIL Rwy 18, 36 **U**  
HIRL Rwy 18-36 **U**

SC-1, 26 DEC 2024 to 23 JAN 2025

SC-1, 26 DEC 2024 to 23 JAN 2025