

LOC/DME I-DLG <b>111.9</b> Chan <b>56</b>	APP CRS <b>196°</b>	Rwy Idg <b>6400</b> TDZE <b>81</b> Apt Elev <b>82</b>
---	------------------------	---

# LOC RWY 19

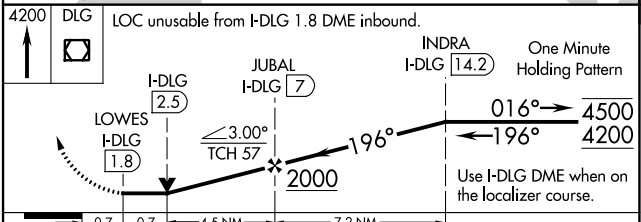
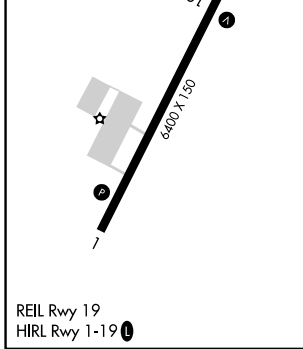
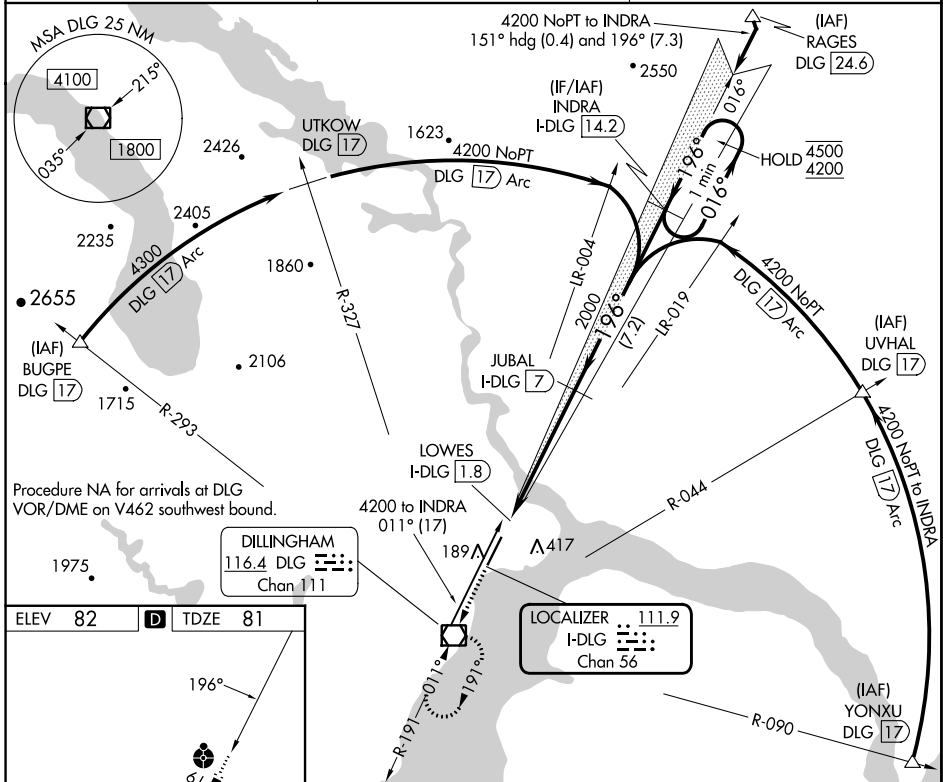
DILLINGHAM (DLG)(PADL)

**DME required.**

**⚠** Circling NA east of Rwy 1-19. VDP NA with Manokotak altimeter setting. When local altimeter setting not received, use Manokotak altimeter setting and increase all MDAs 40 feet and S-LOC 19 visibility Cat C/D 1/8 SM. Inop table does not apply to S-LOC 19 Cats A/B. Inop table does not apply when using Manokotak altimeter setting. Rwy 19 helicopter visibility reduction below 3/4 SM NA.

**ODALS** MISSED APPROACH: Climb to 4200 direct DLG VOR/DME and hold, continue climb-in-hold to 4200.

AFIS <b>125.0</b>	ANCHORAGE CENTER <b>132.75 282.35</b>	DILLINGHAM RADIO <b>123.6 (CTAF)</b>
----------------------	--	---



4200 DLG	LOC unusable from I-DLG 1.8 DME inbound.	INDRA I-DLG 14.2	One Minute Holding Pattern
↑			
	LOWES I-DLG 1.8	JUBAL I-DLG 7	INDRA I-DLG 14.2
		≤3.00° TCH 57	
		2000	4500
			4200
			Use I-DLG DME when on the localizer course.
	0.7	0.7	4.5 NM
			7.2 NM
CATEGORY	A	B	C
S-LOC 19	560-1 479 (500-1)		560-1 1/4 479 (500-1 1/4)
CIRCLING	560-1 478 (500-1)		700-1 3/4 618 (700-1 3/4) 700-2 618 (700-2)

AK, 26 DEC 2024 to 20 FEB 2025

AK, 26 DEC 2024 to 20 FEB 2025