

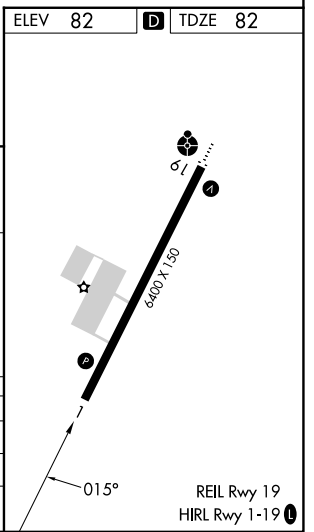
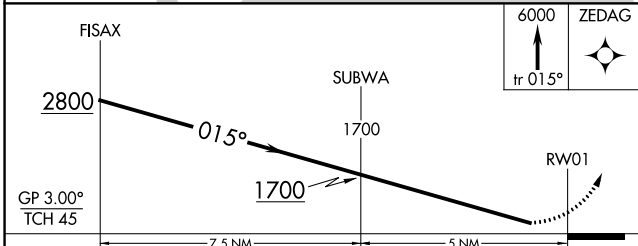
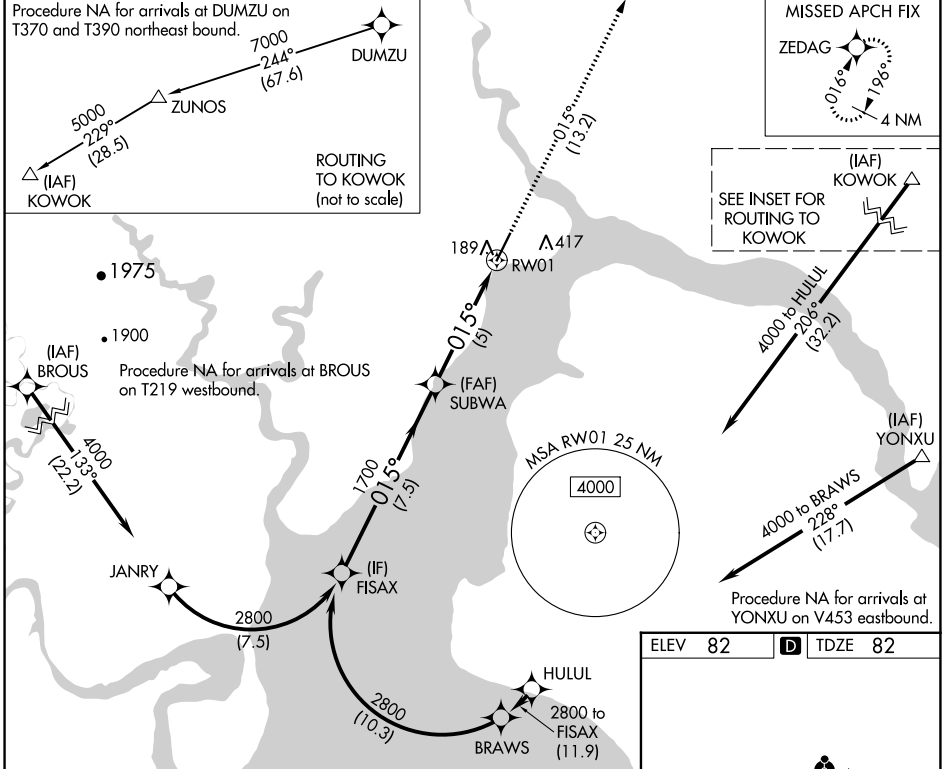
| | | |
|-------------|----------|-------------|
| APP CRS | Rwy Idg | 6400 |
| 015° | TDZE | 82 |
| | Apt Elev | 82 |

RNAV (RNP) Y RWY 1

DILLINGHAM (DLG)(PADL)

| | |
|--|---|
| RNP AR APCH - GPS. | MISSED APPROACH: Climb to 6000 on track 015° to ZEDAG and hold, continue climb-in-hold to 6000. |
| ▼ For uncompensated Baro-VNAV systems, procedure NA below -20°C or above 54°C. | |

| | | |
|----------------------|--|---|
| AFIS 125.0 | ANCHORAGE CENTER 132.75 282.35 | DILLINGHAM RADIO 123.6 (CTAF) 0 |
|----------------------|--|---|



| | | | | |
|-------------|---|-------|-------------|---|
| CATEGORY | A | B | C | D |
| RNP 0.15 DA | | 367-1 | 285 (300-1) | |
| RNP 0.30 DA | | 437-1 | 355 (400-1) | |

AUTHORIZATION REQUIRED

AK, 26 DEC 2024 to 20 FEB 2025

AK, 26 DEC 2024 to 20 FEB 2025