

VOR/DME DLG	APP CRS	Rwy Idg	<b>6400</b>
<b>116.4</b>	<b>010°</b>	TDZE	<b>82</b>
Chan <b>111</b>		Apt Elev	<b>82</b>

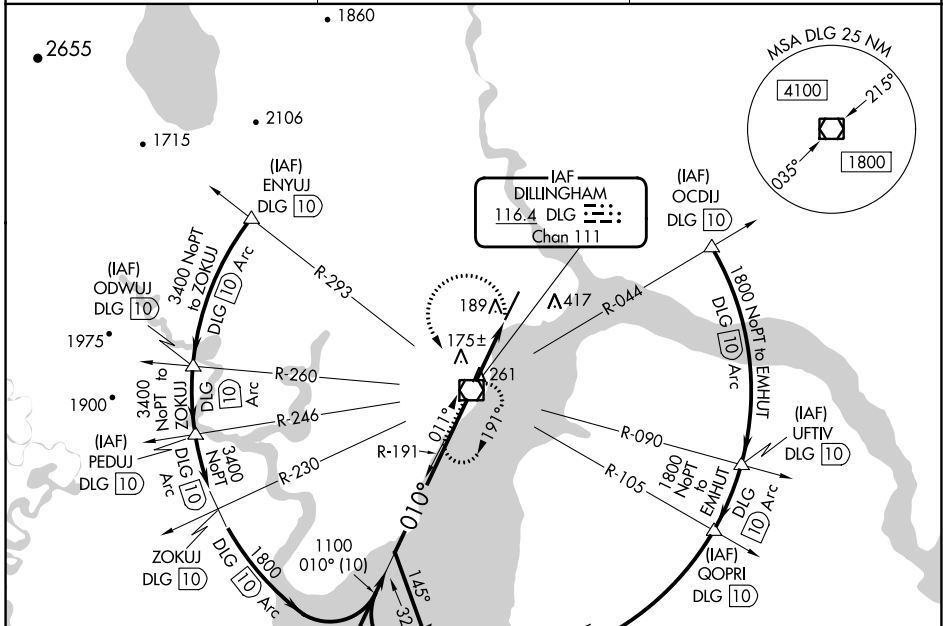
# VOR RWY 1

DILLINGHAM (DLG)(PADL)

**⚠** Circling NA east of Rwy 1-19. Rwy 1 helicopter visibility reduction below 3/4 SM NA. VDP NA when using Manokotak altimeter setting. When local altimeter setting not received, use Manokotak altimeter setting and increase all MDAs 40 feet.

**⚠** MISSED APPROACH: Climbing left turn to 2000 direct DLG VOR/DME and hold, continue climb-in-hold to 2000.

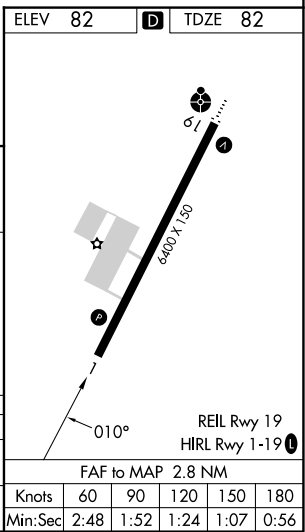
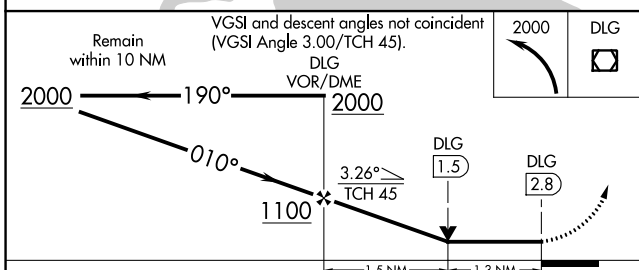
AFIS	ANCHORAGE CENTER	DILLINGHAM RADIO
<b>125.0</b>	<b>132.75 282.35</b>	<b>123.6 (CTAF) 0</b>



AK, 26 DEC 2024 to 20 FEB 2025

AK, 26 DEC 2024 to 20 FEB 2025

ELEV 82	<b>D</b>	TDZE 82
---------	----------	---------



CATEGORY	A	B	C	D
S-1	540-1 458 (500-1)		540-1 3/8 458 (500-1 3/8)	
<b>C</b> CIRCLING	540-1 458 (500-1)		700-1 3/4 618 (700-1 3/4)	700-2 618 (700-2)

Knots					
60	90	120	150	180	
Min:Sec					
2:48	1:52	1:24	1:07	0:56	