


LOC I-BMG 108.3	APP CRS 354°	Rwy Idg TDZE Apt Elev	6500 844 846
---------------------------	------------------------	-----------------------------	---

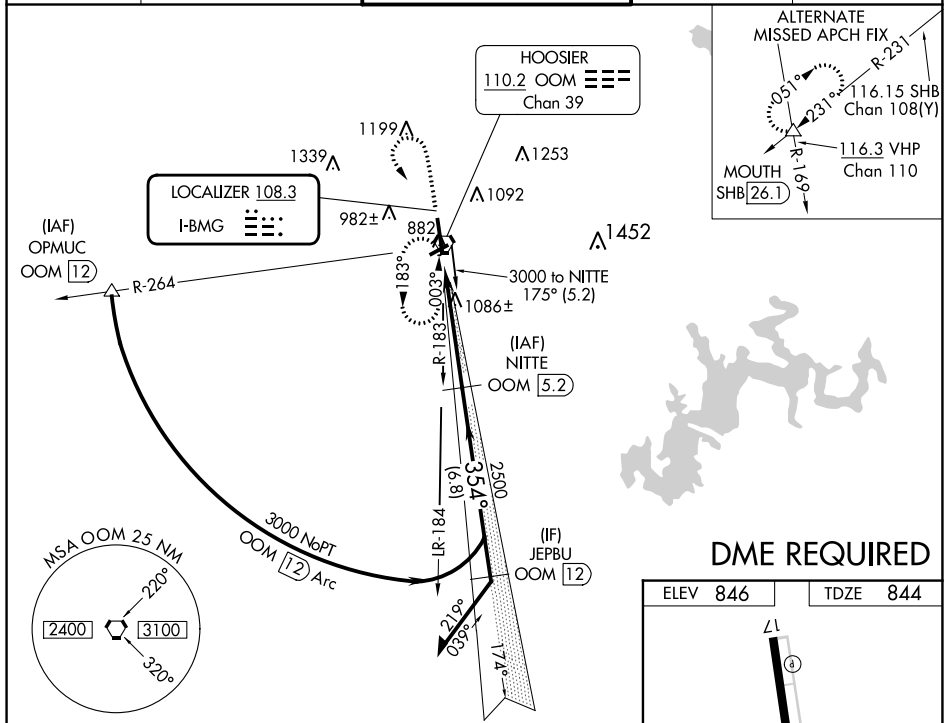
ILS or LOC/DME RWY 35

MONROE COUNTY (BMG)

▼ Circling to Rwy 6/24 NA at night. When local altimeter setting not received, use Terre Haute Rgnl altimeter setting; increase S-ILS 35 DA to 1165 and all MDA 140 feet and increase S-ILS 35 all Cats visibility 1/4 SM, S-LOC 35 Cat C and D and Circling Cat C and D visibility 1/2 SM. For inoperative MALSRR when using Terre Haute Rgnl altimeter setting; increase S-ILS 35 all Cats visibility to 1/4 miles. DME from OOM VORTAC. Simultaneous reception of I-BMG and OOM DME required.

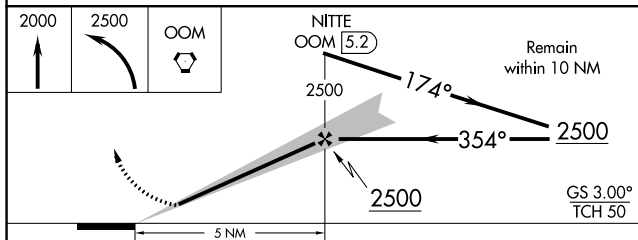
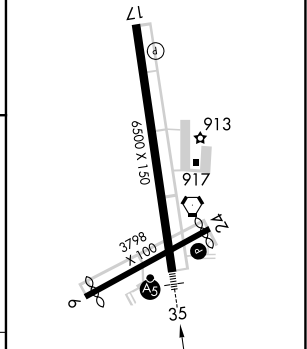
MALSRR

MISSED APPROACH: Climb to 2000 then climbing left turn to 2500 direct OOM VORTAC and hold.

ASOS 134.525	HULMAN APP CON 128.025 339.8	BLOOMINGTON TOWER ★ 120.775 (CTAF) 0	GND CON 121.9	UNICOM 122.95
------------------------	--	--	-------------------------	-------------------------



DME REQUIRED

ELEV 846	TDZE 844
----------	----------



CATEGORY	A	B	C	D
S-ILS 35	1044-1/2 200 (200-1/2)			
S-LOC 35	1420-1/2 576 (600-1/2)		1420-1 576 (600-1)	1420-1 1/4 576 (600-1 1/4)
CIRCLING	1420-1	574 (600-1)	1420-1 1/2 574 (600-1 1/2)	1620-2 1/2 774 (800-2 1/2)

HIRL Rwy 17-35	
MIRL Rwy 6-24	
REIL Rwy 17	
FAF to MAP 5 NM	
Knots	60 90 120 150 180
Min:Sec	5:00 3:20 2:30 2:00 1:40

EC-2, 26 DEC 2024 to 23 JAN 2025

EC-2, 26 DEC 2024 to 23 JAN 2025