

APP CRS	Rwy Idg	6500
055°	TDZE	46
	Apt Elev	47

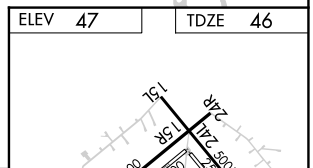
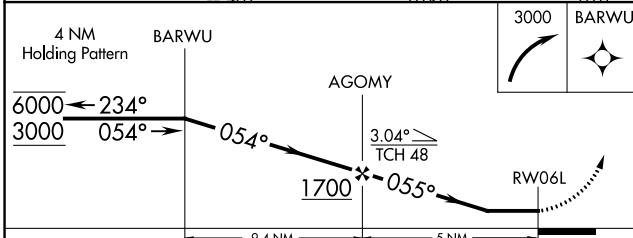
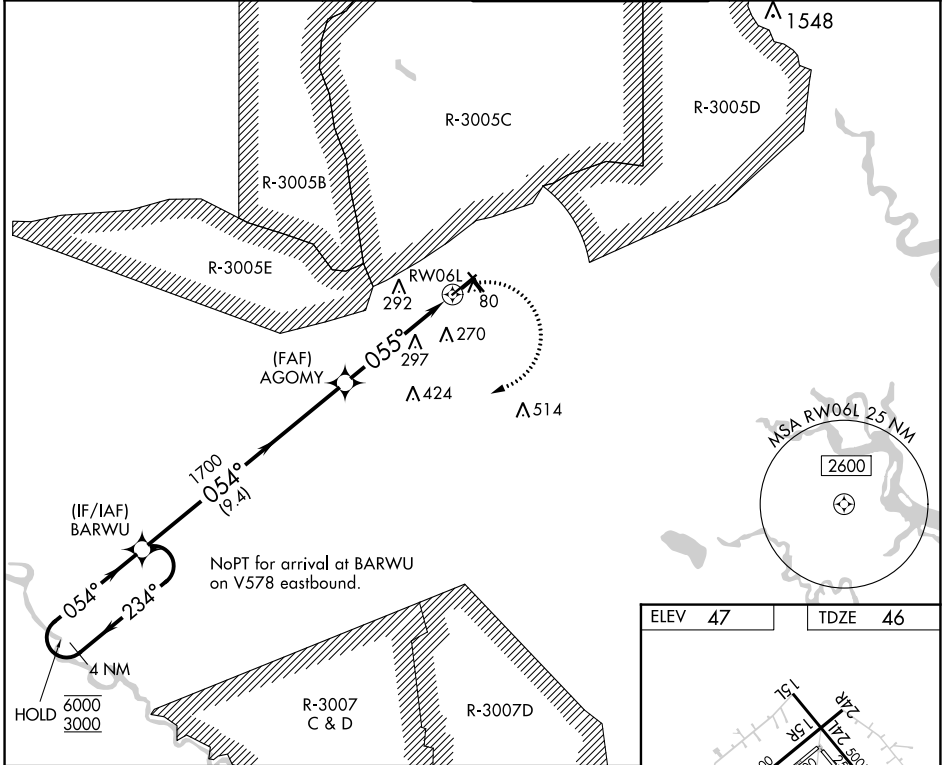
RNAV (GPS) RWY 6L

WRIGHT AAF (FORT STEWART)/MIDCOAST RGNL (LHW)

RNP APCH.
 RADAR required.
 ⚠ Circling NA northeast of Rwy 15L-33R. Rwy 6L helicopter visibility reduction below 1 SM NA. Procedure NA when R3005C/D or R3007C is active and LHW tower is closed. Straight-in/ Circling Rwy 6L NA at night and Circling Rwy 24R NA at night.

MISSED APPROACH: Climbing right turn to 3000 direct BARWU and hold.

ATIS ★ 118.475	SAVANNAH APP CON★ 120.4 353.775	WRIGHT TOWER ★ 126.25 (CTAF) 0 269.275	GND CON 121.7 273.575
--------------------------	---	--	---------------------------------



CATEGORY	A	B	C	D
LNAV MDA	600-1	554 (600-1)	600-1 $\frac{1}{2}$	554 (600-1 $\frac{1}{2}$)
C CIRCLING	600-1 553 (600-1)	620-1 573 (600-1)	680-1 $\frac{3}{4}$ 633 (700-1 $\frac{3}{4}$)	680-2 633 (700-2)

HIRL Rwy 6L-24R, 15L-33R **0**

SE-4, 26 DEC 2024 to 23 JAN 2025

SE-4, 26 DEC 2024 to 23 JAN 2025