

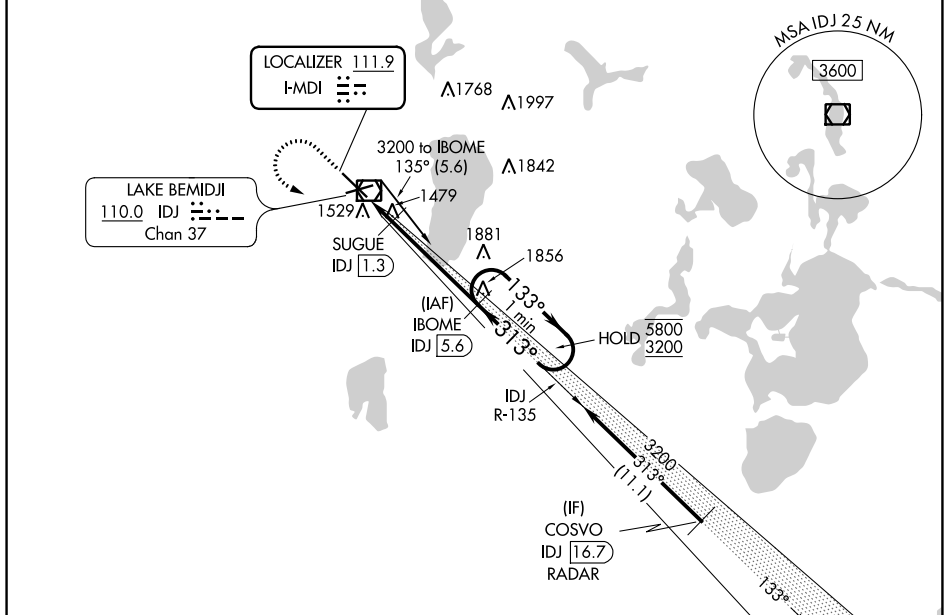
LOC I-MDI <b>111.9</b>	APP CRS <b>313°</b>	Rwy ldg <b>7002</b>
		TDZE <b>1389</b>
		Apt Elev <b>1391</b>

# ILS or LOC RWY 31

BEMIDJI RGNL (BJI)

DME required. RADAR required for procedure entry.		MALSR 	MISSED APPROACH: Climb to 2400 then climbing left turn to 3200 on heading 100° and IDJ VOR/DME R-135 to IBOME/IDJ 5.6 DME and hold.
Autopilot coupled approach NA below 2126. DME from IDJ VOR/DME. Simultaneous reception of I-MDI and IDJ DME required. For inop ALS, increase S-LOC 31 Cat C/D visibility to 1 SM.			

AWOS-3 <b>119.275</b>	MINNEAPOLIS CENTER <b>134.75 251.1</b>	UNICOM <b>122.8 (CTAF) 0</b>
--------------------------	---	---------------------------------



NC-1, 26 DEC 2024 to 23 JAN 2025

NC-1, 26 DEC 2024 to 23 JAN 2025

ELEV 1391	<b>D</b>	TDZE 1389
HIRL Rwy 13-31 <b>1</b> 313° 5.6 NM from FAF MIRL Rwy 7-25 <b>1</b> REIL Rwys 7 and 25 <b>1</b>		
FAF to MAP 5.6 NM		
Knots	60	90 120 150 180
Min:Sec	5:36	3:44 2:48 2:14 1:52

2021 <b>A</b>			
2400	3200	IDJ R-135	IBOME IDJ 5.6
↑	hdg 100°		One Minute Holding Pattern
*LOC only			
SUGUE IDJ 1.3 1840*		IBOME IDJ 5.6 3200 5800 3200 GS 3.00° TCH 45	
← 1.3 NM		← 4.3 NM	
CATEGORY	A	B	C D
S-ILS 31	1589-½		200 (200-½)
S-LOC 31	1740-½	351 (400-½)	1740-⅝ 351 (400-⅝)