

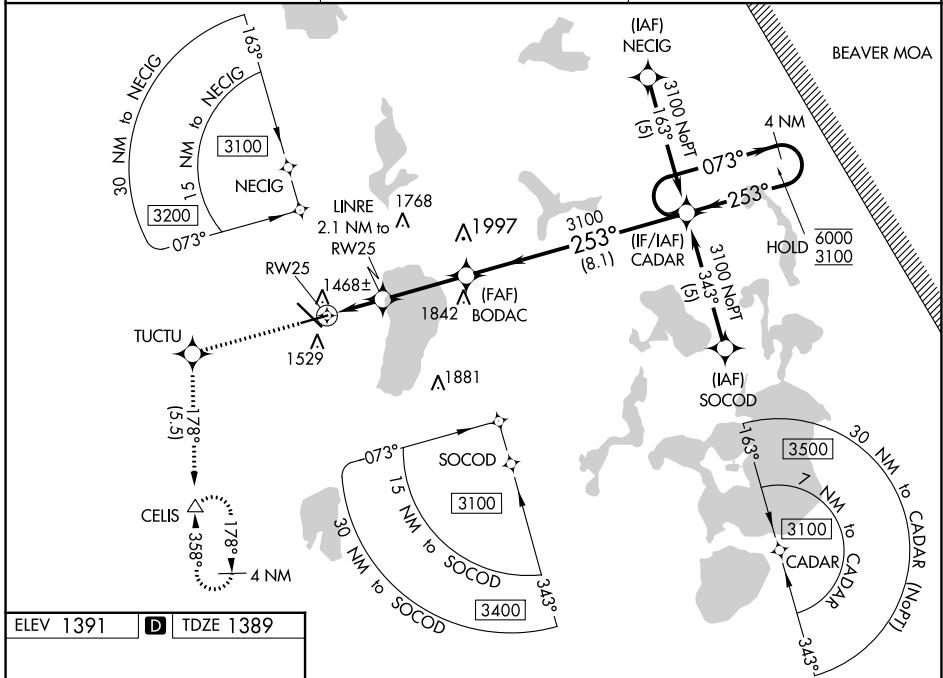
WAAS CH 65917 W25A	APP CRS 253°	Rwy Idg TDZE 1389 Apt Elev 1391
--	------------------------	---

RNAV (GPS) RWY 25

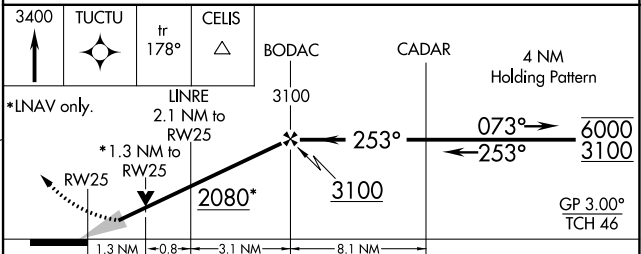
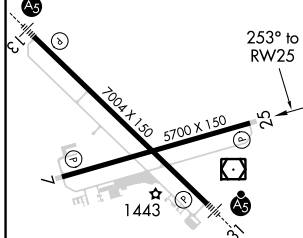
BEMIDJI RGNL (BJI)

RNP APCH.	MISSED APPROACH: Climb to 3400 direct TUCTU and on track 178° to CEUS and hold.
<p>⚠ For uncompensated Baro-VNAV systems, LNAV/VNAV NA below -17°C or above 46°C.</p>	

AWOS-3 119.275	MINNEAPOLIS CENTER 134.75 251.1	UNICOM 122.8 (CTAF) 0
--------------------------	---	---------------------------------



ELEV 1391	D	TDZE 1389
-----------	----------	-----------



CATEGORY	A	B	C	D
LPV DA		1589-3/4	200 (200-3/4)	
LNAV/VNAV DA		1752-1/4	363 (400-1/4)	
LNAV MDA	1840-1	451 (500-1)	1840-1 3/8 451 (500-1 3/8)	1840-1 1/2 451 (500-1 1/2)
C CIRCLING	1840-1 449 (500-1)	1860-1 469 (500-1)	1860-1 1/2 469 (500-1 1/2)	1960-2 569 (600-2)

HIRL Rwy 13-31 **0**
MIRL Rwy 7-25 **0**
REL Rwy 7 and 25 **0**

NC-1, 26 DEC 2024 to 23 JAN 2025

NC-1, 26 DEC 2024 to 23 JAN 2025