

WAAS CH <b>99739</b> <b>W12A</b>	APP CRS <b>124°</b>	Rwy Idg <b>3499</b> TDZE <b>41</b> Apt Elev <b>42</b>
--	------------------------	---

# RNAV (GPS) RWY 12

TAUNTON MUNI/KING FLD (TAN)

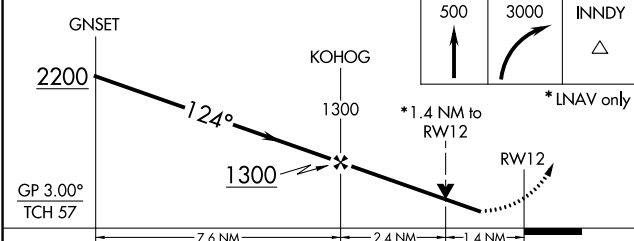
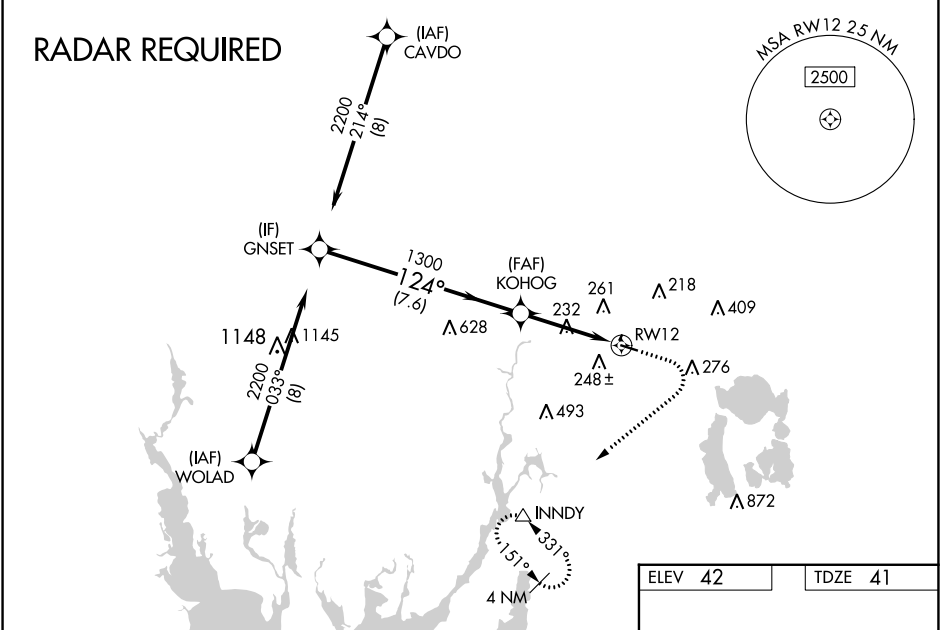
**⚠** Circling NA to Rwy 4 and 22. For uncompensated Baro-VNAV systems, LNAV/VNAV NA below -3°C (27°F) or above 54°C (130°F). Baro-VNAV NA when using New Bedford altimeter setting. DME/DME RNP-0.3 NA. Rwy 12 helicopter visibility reduction below ¼ SM NA. When local altimeter setting not received, use New Bedford altimeter setting and increase LPV DA to 425 feet, LNAV/VNAV DA to 448 feet and all MDA 40 feet, increase LPV and LNAV/VNAV visibilities all Cats ½ SM, increase LNAV Cat C/D visibility ½ SM, and increase Circling Cat D visibility ¼ SM.

**MISSED APPROACH:** (Do not exceed 210K until INNDY) Climb to 500 then climbing right turn to 3000 direct INNDY and hold, continue climb in hold to 3000.

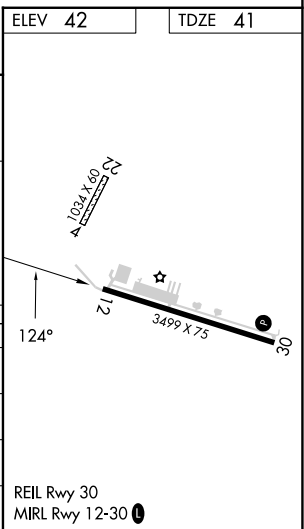
ASOS  
**132.675**

PROVIDENCE APP CON\*  
**128.7 269.525**

UNICOM  
**122.7 (CTAF) 0**



CATEGORY	A	B	C	D
LPV DA	391-1 1/8		350 (400-1 1/8)	
LNAV/VNAV DA	414-1 1/4		373 (400-1 1/4)	
LNAV MDA	540-1 499 (500-1)		540-1 3/8 499 (500-1 3/8)	
<b>C</b> CIRCLING	560-1 518 (600-1)	580-1 538 (600-1)	660-1 3/4 618 (700-1 3/4)	760-2 1/4 718 (800-2 1/4)



NE-1, 26 DEC 2024 to 23 JAN 2025

NE-1, 26 DEC 2024 to 23 JAN 2025