

# COPTER VOR 069°

LOWE AHP (KLR)

VOR EDN <b>116.6</b>	APCH CRS <b>069°</b>	Rwy Idg TDZE Arprt Elev	<b>N/A</b> <b>N/A</b> <b>294</b>
-------------------------	-------------------------	-------------------------------	--

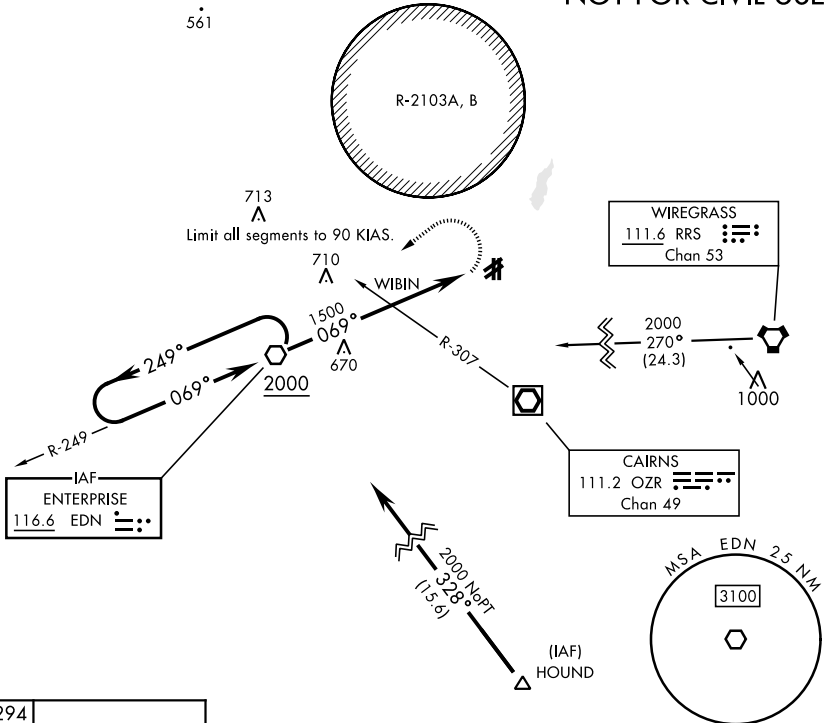
[USA]

When local altimeter setting not received, use Cairns AAF altimeter setting. Helicopter visibility reduction below 3/4 mile not authorized.

MISSED APPROACH: Climbing left turn to 2000 direct to EDN VOR and hold.

ATIS <b>361.1</b>	CAIRNS APP CON <b>133.45 239.275</b>	TOWER★ <b>141.3 289.15</b>	GND CON <b>357.15</b>
----------------------	---	-------------------------------	--------------------------

**NOT FOR CIVIL USE**



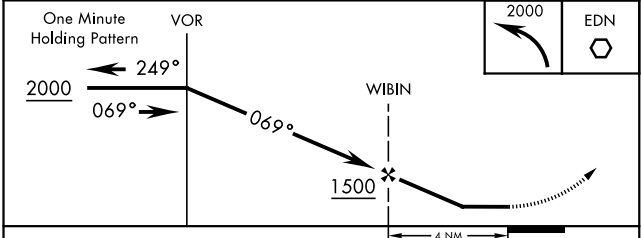
SE-4, 26 DEC 2024 to 23 JAN 2025

SE-4, 26 DEC 2024 to 23 JAN 2025

ELEV 294

LIRL all pads

FAF to MAP 4.0 NM					
Knots	45	60	75	90	105
Min:Sec	5:20	4:00	3:12	2:40	2:17



CATEGORY	COPTER		
H-069°	840-1	546	(600-1)
CAIRNS AAF ALTIMETER SETTING MINIMUMS			
H-069°	860-1	566	(600-1)

# COPTER VOR 069°