

GATEWAY ONE DEPARTURE
(GATWY1.TWILA) 08NOV18

ATIS
128.0
CLNC DEL
120.2 (when tower closed)
GND CON
120.2
REGIONAL TOWER ★
126.0 239.0
ST LOUIS DEP CON
124.2 353.9

**TOP ALTITUDE:
ASSIGNED BY ATC**

TAKEOFF MINIMUMS
Rwys 11, 17, 29, 35: Standard.

ST. LOUIS
117.4 STL
Chan 121

BIBLE GROVE
109.0 BIB
Chan 27

TERRE HAUTE
115.3 TTH
Chan 100

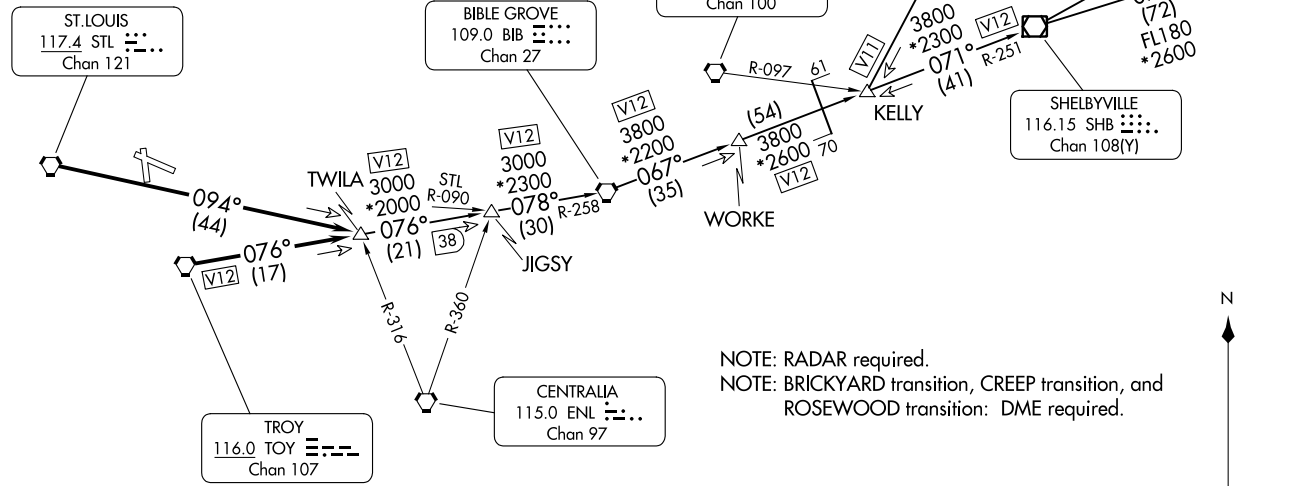
BRICKYARD
116.3 VHP
Chan 110

ROSEWOOD
117.5 ROD
Chan 122

SHELBYVILLE
116.15 SHB
Chan 108(Y)

TROY
116.0 TOY
Chan 107

CENTRALIA
115.0 ENL
Chan 97



NOTE: RADAR required.
NOTE: BRICKYARD transition, CREEP transition, and ROSEWOOD transition: DME required.



(CONTINUED ON FOLLOWING PAGE)

NOTE: Chart not to scale.

ALTON/ST. LOUIS, ILLINOIS
ST LOUIS RGNL (ALN)

(GATWY1.TWILA) 24025
GATEWAY ONE DEPARTURE

AL-5178 (FAA)

ST LOUIS RGNL (ALN)
ALTON/ST. LOUIS, ILLINOIS



DEPARTURE ROUTE DESCRIPTION

Climb on assigned heading for vector to appropriate route, maintain 2500 or assigned altitude, thence. . . .

. . . .from over TOY VORTAC on TOY R-076 or over STL VORTAC on STL R-094 to TWILA INT. Then on (transition), expect clearance to filed altitude 10 minutes after departure.

BIBLE GROVE TRANSITION (GATWY1.BIB): From over TWILA on TOY R-076 to JIGSY, then on BIB R-258 to BIB VORTAC.

BRICKYARD TRANSITION (GATWY1.VHP): From over TWILA on TOY R-076 to JIGSY, then on BIB R-258 to BIB VORTAC, then on BIB R-067 to WORKE, then on BIB R-067 and SHB R-251 to KELLY, then on VHP R-209 to VHP VORTAC.

CREEP TRANSITION (GATWY1.CREEP): From over TWILA on TOY R-076 to JIGSY, then on BIB R-258 to BIB VORTAC, then on BIB R-067 to WORKE, then on BIB R-067 and SHB R-251 to KELLY, then on SHB R-251 to SHB VOR/DME, then on SHB R-075 to CREEP.

JIGSY TRANSITION (GATWY1.JIGSY): From over TWILA on TOY R-076 to JIGSY.

ROSEWOOD TRANSITION (GATWY1.ROD): From over TWILA on TOY R-076 to JIGSY, then on BIB R-258 to BIB VORTAC, then on BIB R-067 to WORKE, then on BIB R-067 and SHB R-251 to KELLY, then on SHB R-251 to SHB VOR/DME, then on SHB R-063 and ROD R-250 to ROD VORTAC.

EC-3, 26 DEC 2024 to 23 JAN 2025

EC-3, 26 DEC 2024 to 23 JAN 2025