

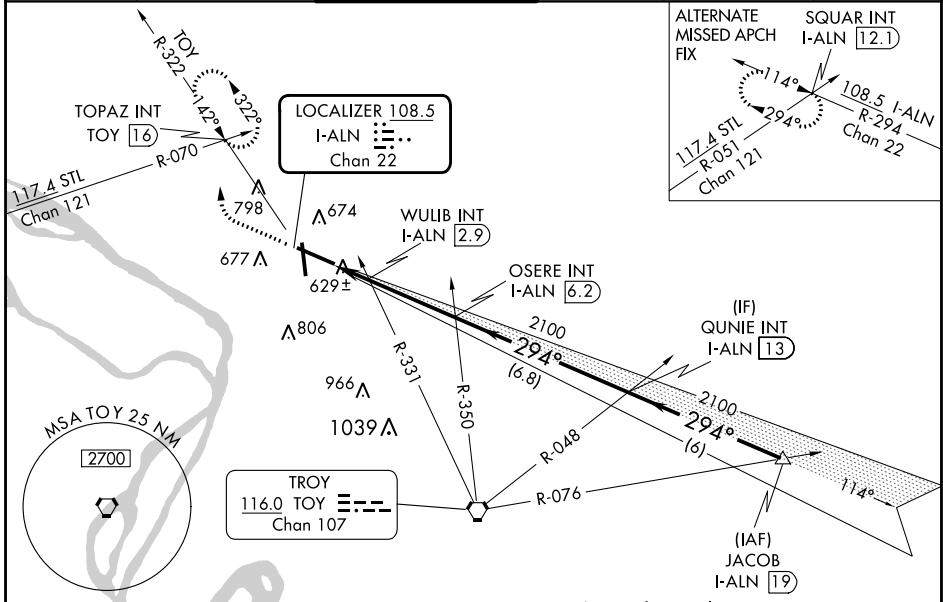
LOC/DME I-ALN 108.5 Chan 22	APP CRS 294°	Rwy Idg TDZE Apt Elev	8099 531 544
--	------------------------	-----------------------------	---

ILS or LOC RWY 29

ST LOUIS RGNL (ALN)

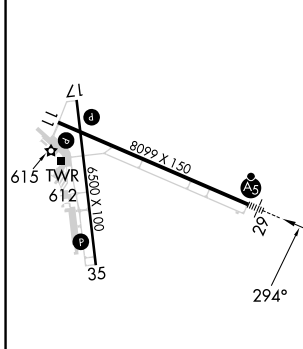
<p>For inop ALS, increase WULIB fix minimums S-LOC 29 Cats C/D visibility to 1 SM.</p>	<p>MALS R</p>	<p>MISSED APPROACH: Climb to 1000 then climbing right turn to 2200 on heading 310° and on TOY VORTAC R-322 to TOPAZ INT/TOY 16 DME and hold.</p>			
			<p>ATIS 128.0</p>	<p>ST LOUIS APP CON 124.2 353.9</p>	<p>REGIONAL TOWER* 126.0 (CTAF) 0 239.0</p>

ATIS 128.0	ST LOUIS APP CON 124.2 353.9	REGIONAL TOWER* 126.0 (CTAF) 0 239.0	GND CON 120.2	CLNC DEL 120.2 (when tower closed)	UNICOM 122.95
-------------------	-------------------------------------	---	----------------------	--	----------------------



Procedure NA for arrivals at JACOB on V12 northeast bound.

ELEV 544	D	TDZE 531
----------	----------	----------



CATEGORY	*LOC only.			
	A	B	C	D
S-ILS 29	731-½ 200 (200-½)			
S-LOC 29	980-½ 449 (500-½)	980-⅞ 449 (500-⅞)		
CIRCLING	1000-1 456 (500-1)	1160-1¾ 616 (700-1¾)	1200-2 656 (700-2)	
WULIB FIX MINIMUMS (DUAL VOR RECEIVERS OR DME REQUIRED)				
S-LOC 29	880-½ 349 (400-½)	880-⅝ 349 (400-⅝)		
CIRCLING	1000-1 456 (500-1)	1160-1¾ 616 (700-1¾)	1200-2 656 (700-2)	

REIL Rwy 11	HIRL Rwy 11-29	MIRL Rwy 17-35			
FAF to MAP 4.8 NM					
Knots	60	90	120	150	180
Min:Sec	4:48	3:12	2:24	1:55	1:36

EC-3, 26 DEC 2024 to 23 JAN 2025

EC-3, 26 DEC 2024 to 23 JAN 2025