

(LINDY8.STL) 24025

LINDBERGH EIGHT DEPARTURE

AL-5178 (FAA)

ST LOUIS RGNL (ALN)
ALTON/ST. LOUIS, ILLINOIS

ATIS
128.0
CLNC DEL
120.2 (when twr closed)
GND CON
120.2
REGIONAL TOWER *
126.0 239.0
ST LOUIS DEP CON
124.2 353.9

**TOP ALTITUDE:
2500**

ST. LOUIS
117.4 STL
Chan 121

VICHY
117.7 VIH
Chan 124

FARMINGTON
115.7 FAM
Chan 104

LITTLE ROCK
113.9 LIT
Chan 86

WALNUT RIDGE
114.5 ARG
Chan 92

EC-3, 26 DEC 2024 to 23 JAN 2025

EC-3, 26 DEC 2024 to 23 JAN 2025

TAKEOFF MINIMUMS

Rwys 11, 17, 29, 35: Standard.

NOTE: DME and RADAR required.

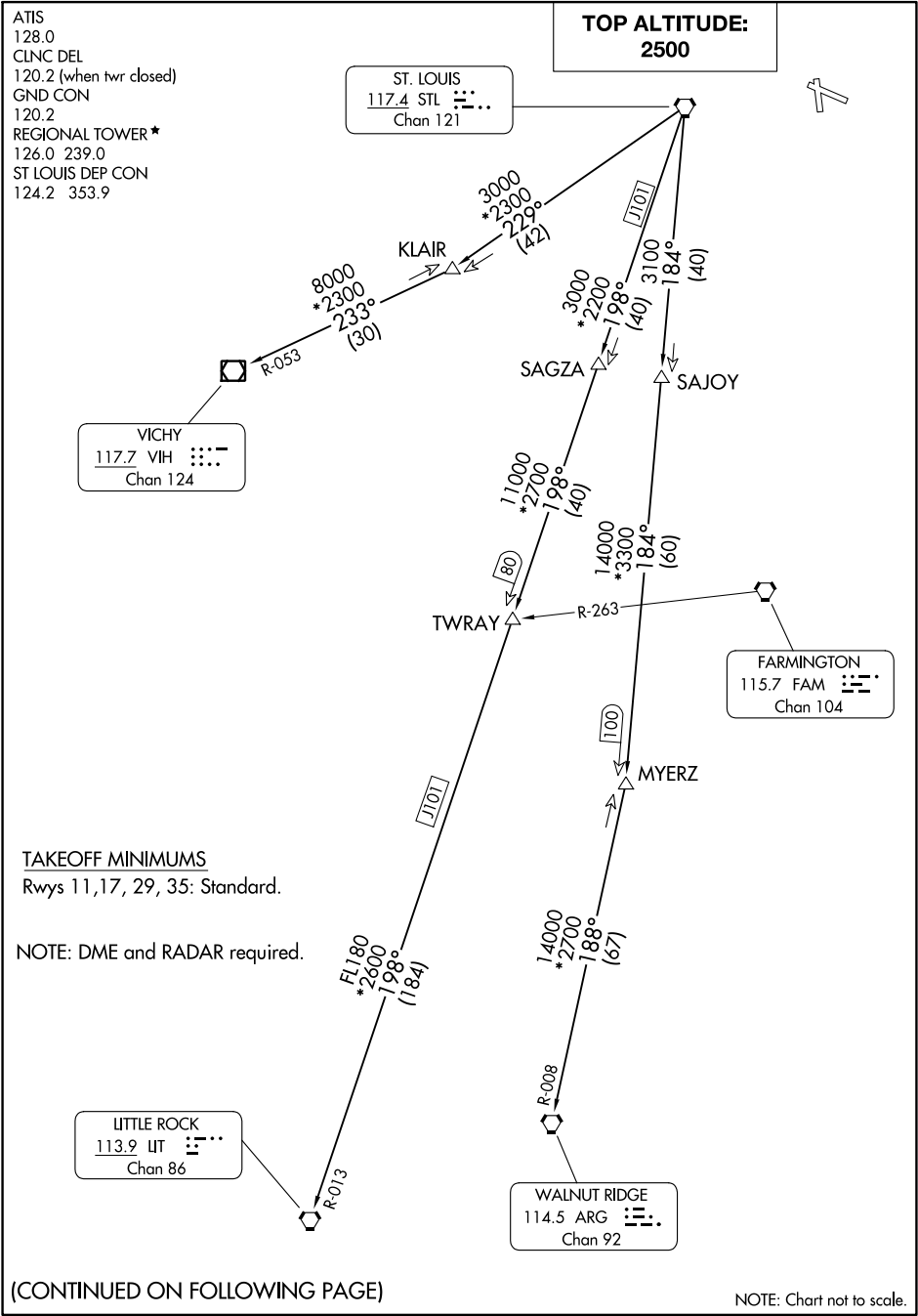
(CONTINUED ON FOLLOWING PAGE)

NOTE: Chart not to scale.

LINDBERGH EIGHT DEPARTURE

(LINDY8.STL) 17JUN21

ALTON/ST. LOUIS, ILLINOIS
ST LOUIS RGNL (ALN)





DEPARTURE ROUTE DESCRIPTION

Climb on assigned heading for vector to appropriate route, maintain 2500 or assigned altitude, thence

. . . . (transition). Expect filed altitude 10 minutes after departure.

LITTLE ROCK TRANSITION (LINDY8.LIT): From over STL VORTAC on STL R-198 to TWRAY, then on STL R-198 and LIT R-013 to LIT VORTAC.

MYERZ TRANSITION (LINDY8.MYERZ): From over STL VORTAC on STL R-184 to MYERZ.

VICHY TRANSITION (LINDY8.VIH): From over STL VORTAC on STL R-229 to KLAIR, then on VIH R-053 to VIH VOR/DME.

WALNUT RIDGE TRANSITION (LINDY8.ARG): From over STL VORTAC on STL R-184 to MYERZ, then on ARG R-008 to ARG VORTAC.

EC-3, 26 DEC 2024 to 23 JAN 2025

EC-3, 26 DEC 2024 to 23 JAN 2025