

PLESS FIVE DEPARTURE

AL-5178 (FAA)

ST LOUIS RGNL (ALN)
ALTON/ST. LOUIS, ILLINOIS

EC-3, 26 DEC 2024 to 23 JAN 2025

ATIS
128.0
CINC DEL
120.2 (when tower closed)
GND CON
120.2
REGIONAL TOWER**
126.0 239.0
ST LOUIS DEP CON
124.2 353.9

TAKEOFF MINIMUMS
Rwys 11, 17, 29, 35: Standard.

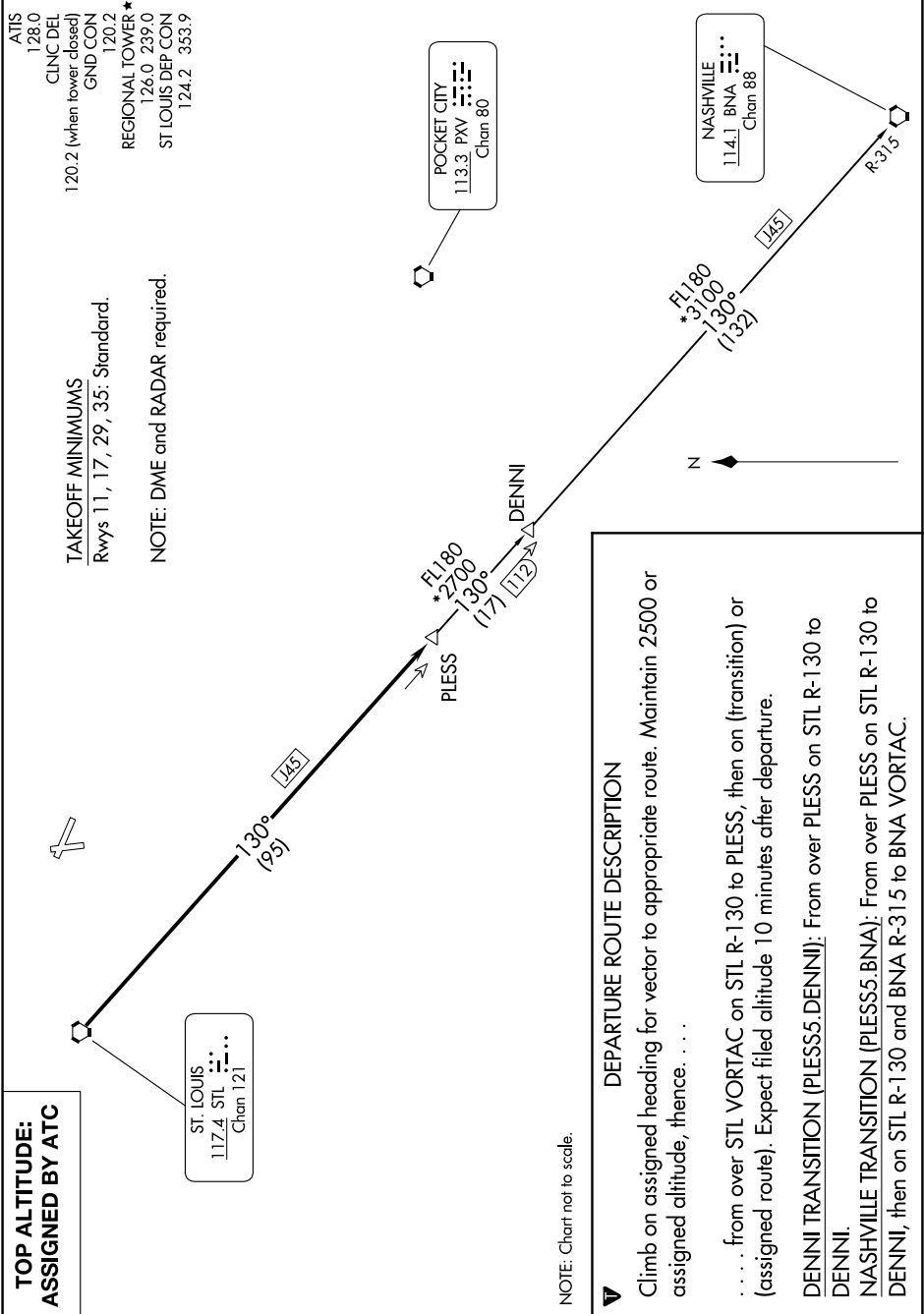
NOTE: DME and RADAR required.

**TOP ALTITUDE:
ASSIGNED BY ATC**

ST. LOUIS
117.4 STL
Chan 121

POCKET CITY
113.3 PXV
Chan 80

NASHVILLE
114.1 BNA
Chan 88



DEPARTURE ROUTE DESCRIPTION
Climb on assigned heading for vector to appropriate route. Maintain 2500 or assigned altitude, thence. . . .
. . . . from over STL VORTAC on STL R-130 to PLESS, then on (transition) or (assigned route). Expect filed altitude 10 minutes after departure.
DENNII TRANSITION (PLESS5.DENNII): From over PLESS on STL R-130 to DENNII.
NASHVILLE TRANSITION (PLESS5.BNA): From over PLESS on STL R-130 to DENNII, then on STL R-130 and BNA R-315 to BNA VORTAC.

NOTE: Chart not to scale.

PLESS FIVE DEPARTURE

EC-3, 26 DEC 2024 to 23 JAN 2025