

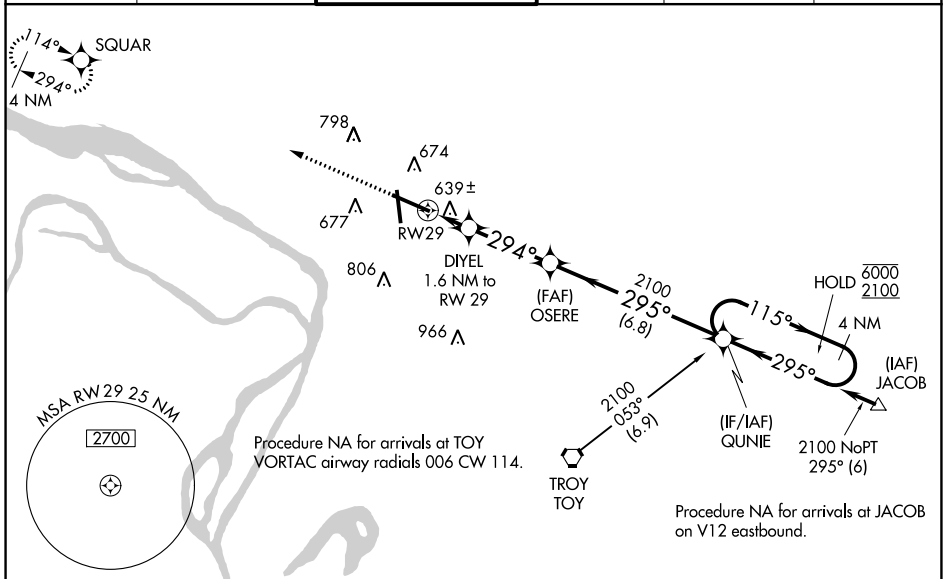
WAAS CH <b>77507</b> <b>W29A</b>	APP CRS <b>294°</b>	Rwy Ldg TDZE Apt Elev	<b>8099</b> <b>531</b> <b>544</b>
--	------------------------	-----------------------------	---

# RNAV (GPS) RWY 29

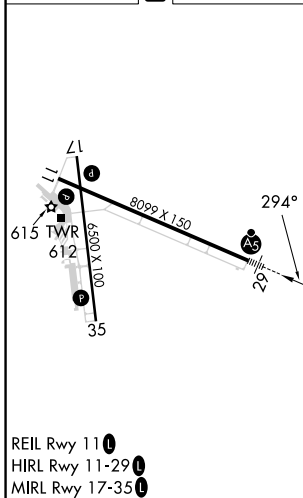
ST LOUIS RGNL (ALN)

RNP APCH.	MALSRL	MISSED APPROACH: Climb to 2400 direct SQUAR and hold.
<p>For uncompensated Baro-VNAV systems, LNAV/VNAV NA below -16°C or above 54°C. For inop ALS, increase LNAV/VNAV all Cats visibility to 3/8 SM and LNAV Cat C/D visibility to 1 SM.</p>		

ATIS <b>128.0</b>	ST LOUIS APP CON <b>124.2 353.9</b>	REGIONAL TOWER* <b>126.0 (CTAF) 0 239.0</b>	GND CON <b>120.2</b>	CLNC DEL <b>120.2</b> (when tower closed)	UNICOM <b>122.95</b>
----------------------	--	--	-------------------------	---	-------------------------



ELEV 544	<b>D</b>	TDZE 531
----------	----------	----------



<p>2400 SQUAR</p> <p>DIYEL OSERE QUNIE 4 NM Holding Pattern</p> <p>*LNAV only.</p> <p>*1 NM to RWY 29</p> <p>*1080</p> <p>GP 3.00° TCH 55</p>				
2100	2100	2100	2100	2100
1 NM	0.6 NM	3.2 NM	6.8 NM	
CATEGORY	A	B	C	D
LPV DA		731-1/2	200 (200-1/2)	
LNAV/VNAV DA		825-1/2	294 (300-1/2)	
LNAV MDA	900-1/2	369 (400-1/2)	900-3/4	369 (400-3/4)
CIRCLING	1000-1	456 (500-1)	1160-1 3/4 616 (700-1 3/4)	1200-2 656 (700-2)

EC-3, 26 DEC 2024 to 23 JAN 2025

EC-3, 26 DEC 2024 to 23 JAN 2025