

WAAS CH <b>86537</b> <b>W11A</b>	APP CRS <b>116°</b>	Rwy Idg TDZE <b>718</b> Apt Elev <b>722</b>	<b>6501</b>
--	------------------------	---	-------------

# RNAV (GPS) RWY 11

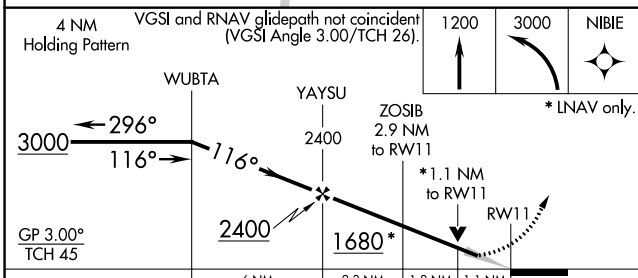
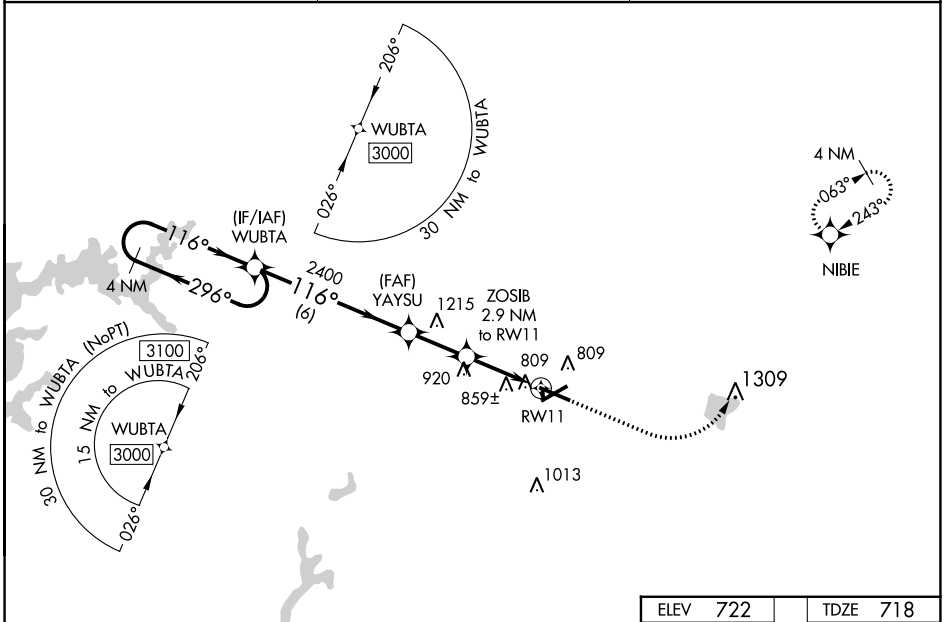
COLES COUNTY MEML (MTO)

RNP APCH.

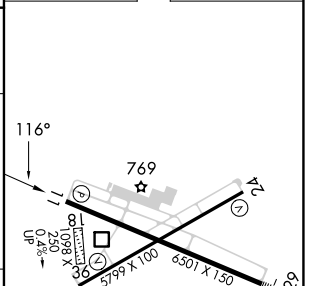
▼ When local altimeter setting not received, use Champaign/Urbana altimeter setting and increase all DA 82 feet, increase all MDA 100 feet, and increase LPV all Cats visibility 1/8 mile, LNAV/VNAV all Cats visibility 3/8 mile, LNAV Cats C and D and Circling Cat C visibility 1/4 mile, and Circling D visibility 1/2 mile. For uncompensated Baro-VNAV systems, LNAV/VNAV NA below -19°C or above 54°C. Baro-VNAV and VDP NA when using Champaign/Urbana altimeter setting. Circling NA to Rwys 18 and 36.

MISSED APPROACH: Climb to 1200 then climbing left turn to 3000 direct NIBIE and hold.

ASOS <b>118.475</b>	CHAMPAIGN APP CON ★ <b>132.85 290,225</b>	UNICOM <b>122.7 (CTAF) 0</b>
------------------------	--	---------------------------------



ELEV 722	TDZE 718
----------	----------



CATEGORY	A	B	C	D
LPV DA	918-3/4 200 (200-3/4)			
LNAV/VNAV DA	1175-15/8 457 (500-15/8)			
LNAV MDA	1120-1	402 (400-1)	1120-11/8	402 (400-11/8)
<b>C</b> CIRCLING	1160-1 438 (500-1)	1180-1 458 (500-1)	1240-11/2 518 (600-11/2)	1380-2 658 (700-2)

MIRL Rwy 6-24 0  
 HILL Rwy 11-29 0  
 REIL Rwys 6, 11, and 24 0