

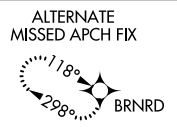
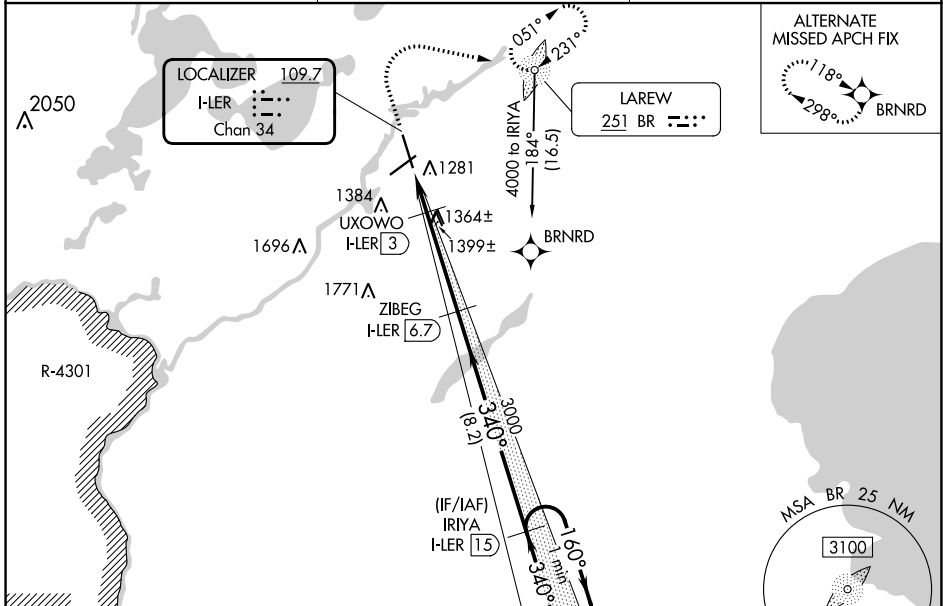
LOC/DME I-LEr	APP CRS	Rwy Idg	<b>7100</b>
<b>109.7</b>	<b>340°</b>	TDZE	<b>1232</b>
Chan <b>34</b>		Apt Elev	<b>1232</b>

# ILS or LOC/DME RWY 34

BRainerd LAKES RGnL (BRD)

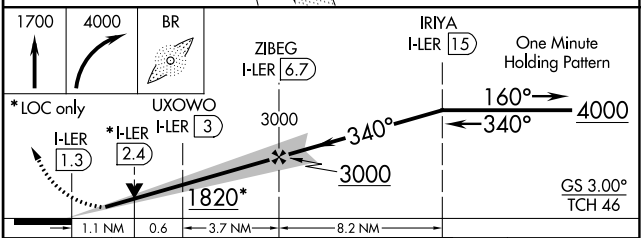
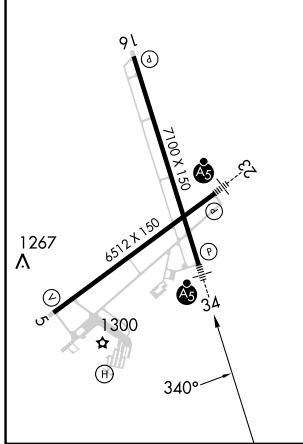
DME required. ADF required. RNP APCH-GPS. from GOLLF.	MALSR	MISSED APPROACH: Climb to 1700 then climbing right turn to 4000 direct BR LOM, continue climb-in-hold to 4000.
▼ VDP NA with Aikin altimeter setting. When local altimeter setting not received, use Aikin altimeter setting: increase all DA to 1484; ▲ NA increase all MDAs 60 feet and visibility S-LOC 34 Cat C/D ¼ SM and visibility Circling Cat D ¼ SM.		

ASOS <b>126.775</b>	MINNEAPOLIS CENTER <b>118.05 239.0</b>	UNICOM <b>122.7(CTAF) 0</b>
------------------------	---	--------------------------------



ELEV 1232	TDZE 1232
-----------	-----------

HIRL Rwy 5-23 and 16-34  
REIL Rwy 5 and 16



CATEGORY	A	B	C	D
S-ILS 34	1432-1/2		200 (200-1/2)	
S-LOC 34	1620-1/2 388 (400-1/2)		1620-5/8 388 (400-5/8)	
<b>C</b> CIRCLING	1760-1 528 (600-1)		1760-1 1/2 628 (700-2)	

NC-1, 26 DEC 2024 to 23 JAN 2025

NC-1, 26 DEC 2024 to 23 JAN 2025