

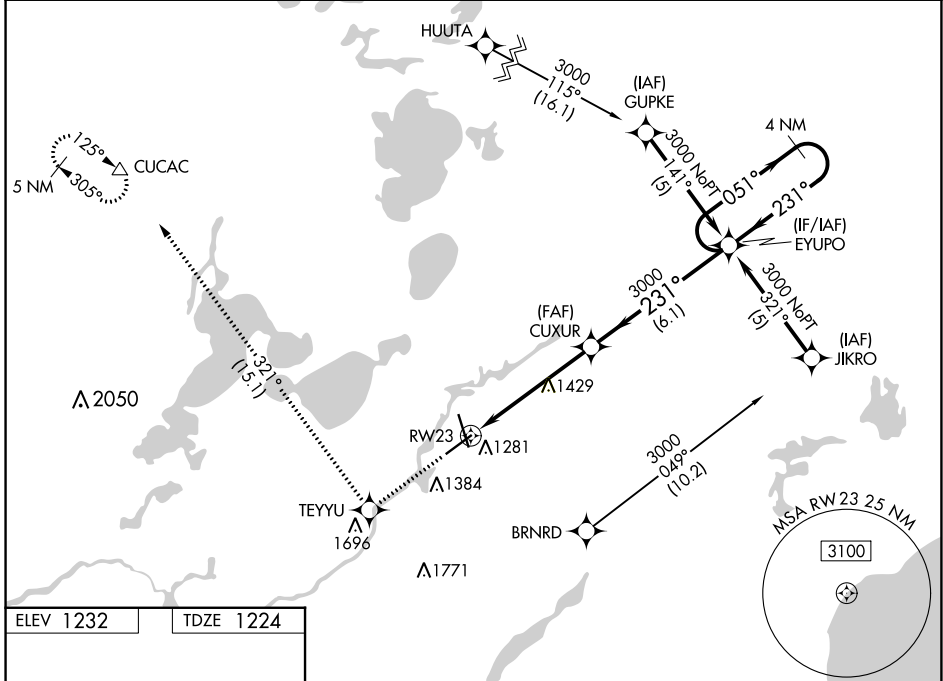
WAAS CH <b>82502</b> <b>W23A</b>	APP CRS <b>231°</b>	Rwy Idg <b>6512</b> TDZE <b>1224</b> Apt Elev <b>1232</b>
--	------------------------	---

# RNAV (GPS) RWY 23

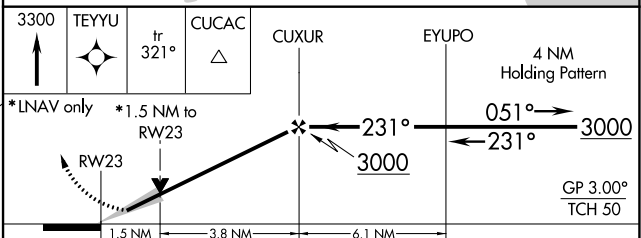
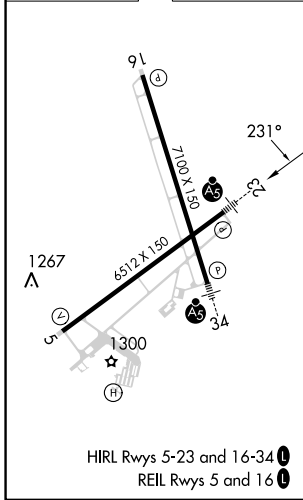
BRainerd LAKES RGNL (BRD)

RNP APCH. ▼ For uncompensated Baro-VNAV systems, LNAV/VNAV NA below -17°C or above 54°C. Baro-VNAV and VDP NA when using Aikin altimeter setting. When local altimeter setting not received, use Aikin altimeter setting and increase all DAs 52 feet and all MDAs 60 feet.	MALSR 	MISSED APPROACH: Climb to 3300 direct TEYU and on track 321° to CUCAC and hold.
--	-----------	---

ASOS <b>126.775</b>	MINNEAPOLIS CENTER <b>118.05 239.0</b>	UNICOM <b>122.7</b> (CTAF)
------------------------	---	-------------------------------



ELEV 1232	TDZE 1224
-----------	-----------



CATEGORY	A	B	C	D
LPV DA		1501-½	277 (300-½)	
LNAV/VNAV DA		1573-¾	349 (400-¾)	
LNAV MDA	1760-½	536 (600-½)	1760-1 536 (600-1)	1760-1½ 536 (600-1¼)
CIRCLING	1760-1	528 (600-1)	1760-1½ 528 (600-1½)	1860-2 628 (700-2)

NC-1, 26 DEC 2024 to 23 JAN 2025

NC-1, 26 DEC 2024 to 23 JAN 2025