


WAAS CH <b>70711</b> <b>W34A</b>	APP CRS <b>340°</b>	Rwy Idg <b>7100</b> TDZE <b>1232</b> Apt Elev <b>1232</b>
--	------------------------	---

# RNAV (GPS) RWY 34


BRAINERD LAKES RGNL (BRD)

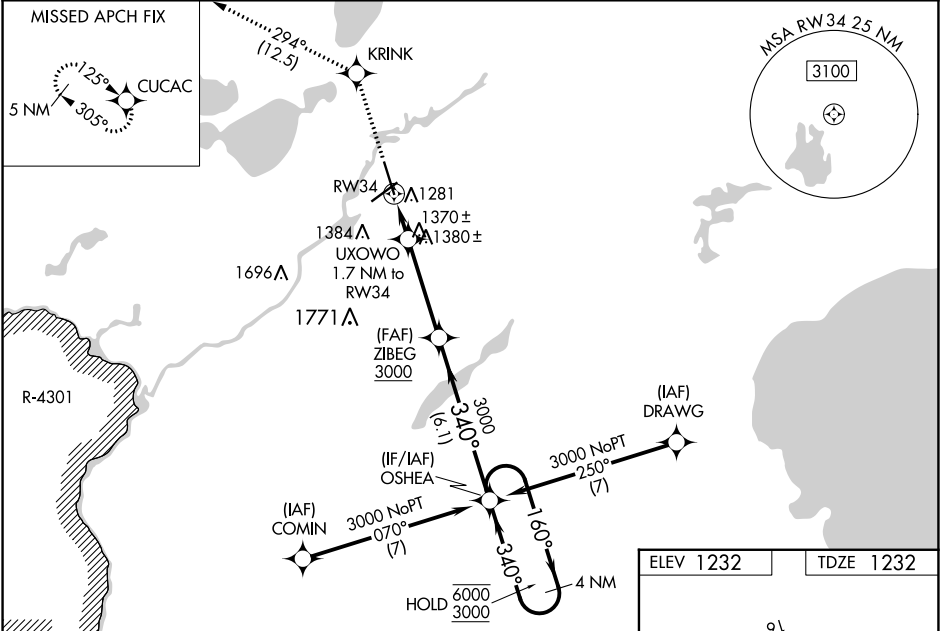
RNP APCH - GPS.

**⚠** For uncompensated Baro-VNAV systems, LNAV/VNAV NA below -21°C or above 54°C. Baro-VNAV and VDP NA when using AIT altimeter setting. When local altimeter setting not received, use AIT altimeter setting and increase LPV DA to 1484 feet; increase LNAV/VNAV DA to 1578 feet and all visibilities ½ SM. Increase all MDAs 60 feet and LNAV visibility Cat C/D ¼ SM. For inop ALS when using AIT altimeter setting, increase LNAV/VNAV all Cats visibility to 1 SM. For inop ALS increase LNAV/VNAV all Cats visibility to ¾ SM.

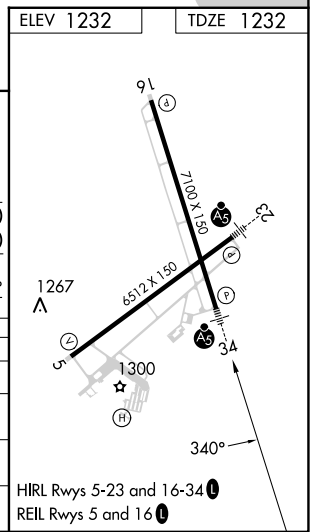
MALSR 

**MISSED APPROACH:** Climb to 3300 direct KRINK and on 294° track to CUCAC and hold.

ASOS <b>126.775</b>	MINNEAPOLIS CENTER <b>118.05 239.0</b>	UNICOM <b>122.7 (CTAF)</b> 
------------------------	---	---



3300	KRINK	tr 294°	CUCAC	ZIBEG	OSHEA	4 NM Holding Pattern
				3000		
				UXOWO 1.7 NM to RW34		
				1.1 NM to RW34		
				1820	340°	6000 3000
				3000	340°	GP 3.00° TCH 47
				1.1 NM	0.6 NM	3.7 NM
				6.1 NM		
CATEGORY	A	B	C	D		
LPV DA		1432-½	200 (200-½)			
LNAV/VNAV DA		1526-½	294 (300-½)			
LNAV MDA	1620-½	388 (400-½)	1620-⅝	388 (400-⅝)		
CIRCLING	1760-1	528 (600-1)	1760-1½	1840-2		
			528 (600-1½)	608 (700-2)		



NC-1, 26 DEC 2024 to 23 JAN 2025

NC-1, 26 DEC 2024 to 23 JAN 2025