

FORT NOVOSHEL, ALABAMA

# COPTER RNAV (GPS) RWY 17

APCH CRS	Rwy Idg	476
176°	TDZE	318
	Arpt Elev	318

AL-5183 [USA]

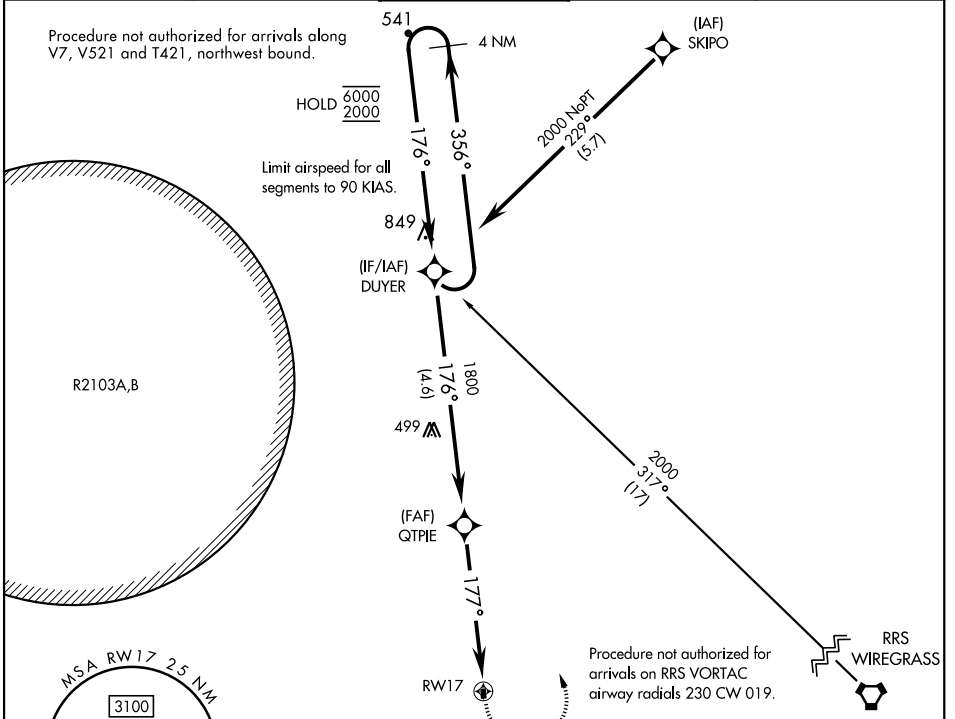
HANCHEY AHP (STRIP) (KHEY)

RNP APCH - GPS

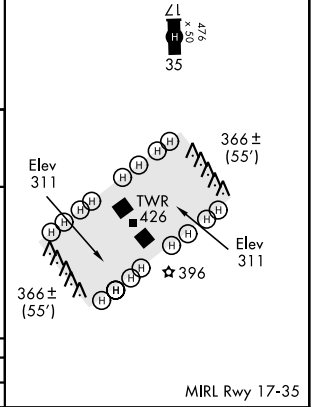
**▼** Use CAIRNS altimeter setting, when not received,  
**▲** use LOWE altimeter setting.

MISSED APPROACH: Climbing left turn to 2000 direct DUYER and hold.

ATIS ★	CAIRNS APP CON	TOWER ★	GND CON	CAIRNS CLNC DEL
141.375	125.4 327.125	140.5 387.85	142.55 225.575	118.075 380.1



ELEV 318	TDZE 318
----------	----------



4 NM Holding Pattern.	DUYER	2000	DUYER
6000	← 356°	→ 176°	
2000			
	176°	1800	QTPIE
		4.52°	TCH 40
		3 NM	RWY 17
	4.6 NM		

CATEGORY	COPTER	
LNAV MDA	900-1/2	582 (600-1/2)

FORT NOVOSHEL, ALABAMA

31° 21' N-85° 39' W

HANCHEY AHP (STRIP) (KHEY)

Amdt 2 20APR23

# COPTER RNAV (GPS) RWY 17

SE-4, 26 DEC 2024 to 23 JAN 2025

SE-4, 26 DEC 2024 to 23 JAN 2025