

LOC I-DVS <b>111.9</b>	APP CRS <b>357°</b>	Rwy Idg TDZE Apt Elev	<b>8501</b> <b>790</b> <b>794</b>
---------------------------	------------------------	-----------------------------	---

# ILS RWY 35 (SA CAT I & II)

GERALD R FORD INTL (G.R.)

DME required. DME or RADAR required for procedure entry.

**SA CAT I:** Requires specific OPSPEC, MSPEC, or LOA approval and use of HUD to DH.

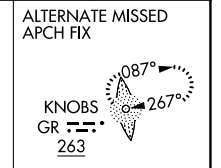
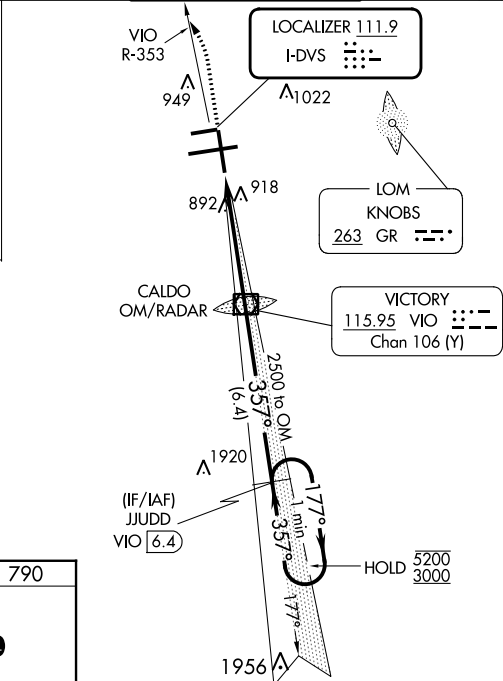
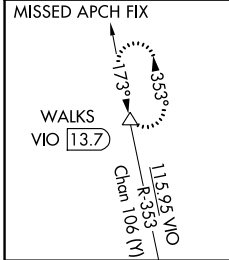
**SA CAT II:** Reduced lighting: requires specific OPSPEC, MSPEC, or LOA approval and use of autoland or HUD to touchdown.

Procedure NA when tower closed.

**MALS R**

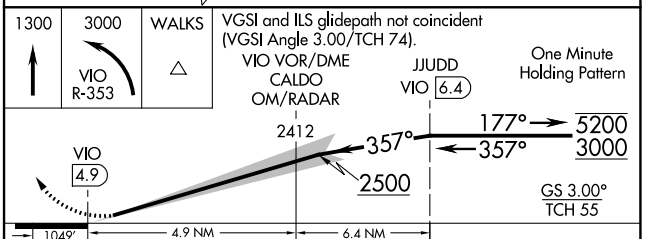
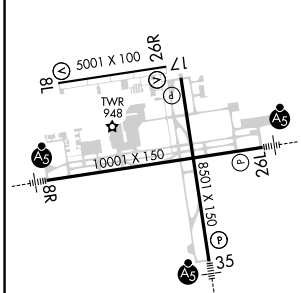
**MISSED APPROACH:** Climb to 1300 then climbing left turn to 3000 on VIO VOR/DME R-353 to WALKS 13.7 DME and hold.

ATIS <b>118.725</b>	GREAT LAKES APP CON * <b>128.4 257.6</b>	GRAND RAPIDS TOWER * <b>135.65 (CTAF) 0 339.8</b>	GND CON <b>121.8</b>	CLNC DEL <b>119.3</b>	UNICOM <b>122.95</b>
------------------------	---	--	-------------------------	--------------------------	-------------------------



ELEV 794	<b>D</b>	TDZE 790
----------	----------	----------

MIRL Rwy 8L-26R  
REIL Rwys 8L, 17 and 26R  
HIRL Rwys 8R-26L and 17-35



CATEGORY	A	B	C	D
S-ILS 35	SA CAT I RA 160/14 150 DA 940			
S-ILS 35	SA CAT II RA 122/12 100 DA 890			

**SA CATEGORY I & II ILS - SPECIAL AIRCREW & AIRCRAFT CERTIFICATION REQUIRED**

FAF to MAP 4.9 NM

Knots	60	90	120	150	180
Min:Sec	4:54	3:16	2:27	1:58	1:38

EC-1, 26 DEC 2024 to 23 JAN 2025

EC-1, 26 DEC 2024 to 23 JAN 2025