

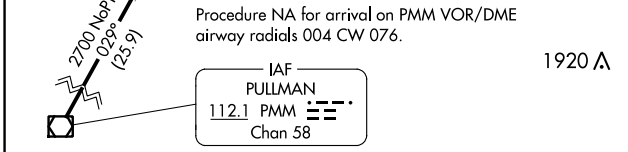
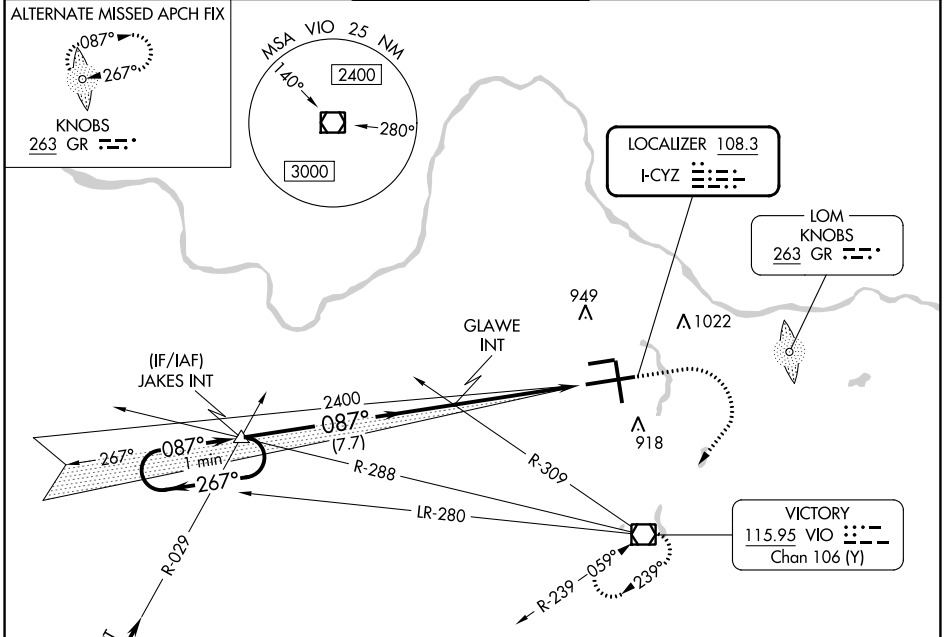
LOC I-CYZ <b>108.3</b>	APP CRS <b>087°</b>	Rwy Ldg TDZE Apt Elev	<b>10001</b> <b>794</b> <b>794</b>
---------------------------	------------------------	-----------------------------	--

# ILS or LOC RWY 8R

GERALD R FORD INTL (G.R.R)

<p><b>▽</b> *RVR 1800 authorized with the use of FD or AP or HUD to DA.</p>		<p>MALS R</p>	<p>MISSED APPROACH: Climb to 1300 then climbing right turn to 3000 direct VIO VOR/DME and hold.</p>
---	--	---------------	---

ATIS <b>118.725</b>	GREAT LAKES APP CON * <b>128.4 257.6</b>	GRAND RAPIDS TOWER * <b>135.65 (CTAF) 0 339.8</b>	GND CON <b>121.8</b>	CLNC DEL <b>119.3</b>	UNICOM <b>122.95</b>
------------------------	---	--	-------------------------	--------------------------	-------------------------



ELEV	794	D	TDZE	794
------	-----	---	------	-----

MIRL Rwy 8L-26R **Ⓛ**  
 REIL Rwys 8L, 17 and 26R **Ⓛ**  
 HIRL Rwys 8R-26L and 17-35 **Ⓛ**

FAF to MAP 4.8 NM

Knots	60	90	120	150	180
Min:Sec	4:48	3:12	2:24	1:55	1:36

One Minute Holding Pattern	JAKES INT	GLAWE INT	1300	3000	VIO
2700	267°	087°	2400	2400	7.7 NM
GS 3.00°	087°	2400	2400	4.8 NM	
TCH 51					
CATEGORY	A	B	C	D	
S-ILS 8R		*994/24	200 (200-½)		
S-LOC 8R	1240/24	446 (500-½)	1240/45	446 (500-¾)	
<b>C</b> CIRCLING	1260-1	466 (500-1)	1340-1½	1360-2	566 (600-2)

EC-1, 26 DEC 2024 to 23 JAN 2025

EC-1, 26 DEC 2024 to 23 JAN 2025