

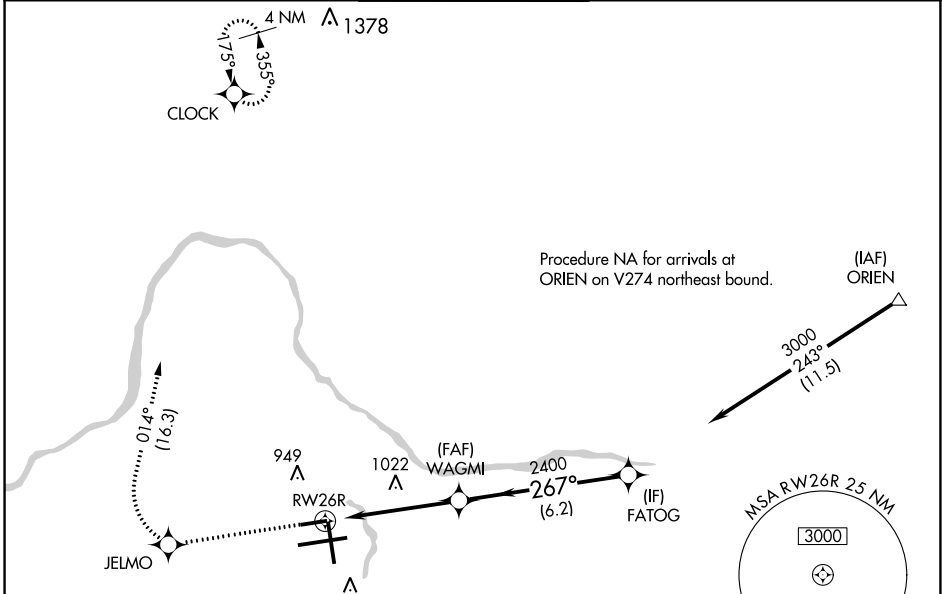
WAAS CH <b>82413</b> <b>W26A</b>	APP CRS <b>267°</b>	Rwy Idg <b>5001</b> TDZE <b>787</b> Apt Elev <b>794</b>
--	------------------------	---

# RNAV (GPS) RWY 26R

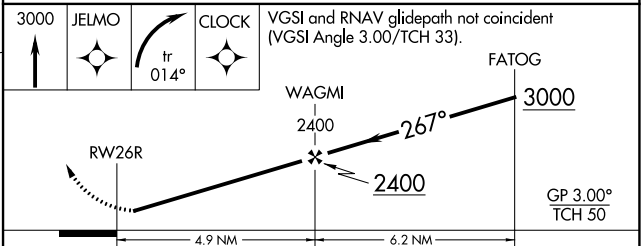
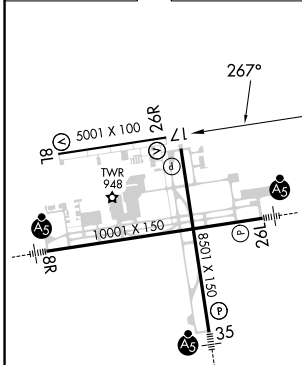
GERALD R FORD INTL (G.R.R.)

RNP APCH.		MISSED APPROACH: Climb to 3000 direct JELMO and right turn on track 014° to CLOCK and hold.			
<p><b>▽</b></p> <p>For uncompensated Baro-VNAV systems, LNAV/VNAV NA below -16°C or above 47°C. Rwy 26R helicopter visibility reduction below 1 SM NA.</p>					

ATIS <b>118.725</b>	GREAT LAKES APP CON * <b>128.4 257.6</b>	GRAND RAPIDS TOWER * <b>135.65 (CTAF) 339.8</b>	GND CON <b>121.8</b>	CLNC DEL <b>119.3</b>	UNICOM <b>122.95</b>
------------------------	---	--	-------------------------	--------------------------	-------------------------



ELEV 794	<b>D</b>	TDZE 787
----------	----------	----------



CATEGORY	A	B	C	D
LPV DA	1037-1 250 (300-1)			
LNAV/VNAV DA	1216-1½ 429 (500-1½)			
LNAV MDA	1280-1	493 (500-1)	1280-1⅜ 493 (500-1⅜)	1280-1½ 493 (500-1½)
<b>C</b> CIRCLING	1280-1	486 (500-1)	1340-1½ 546 (600-1½)	1360-2 566 (600-2)

MIRL Rwy 8L-26R **Ⓛ**  
 REIL Rwy 8L, 17 and 26R **Ⓛ**  
 HIRL Rwy 8R-26L and 17-35 **Ⓛ**

EC-1, 26 DEC 2024 to 23 JAN 2025

EC-1, 26 DEC 2024 to 23 JAN 2025