

WAAS CH 87112 W35A	APP CRS 357°	Rwy Idg 8501 TDZE 790 Apt Elev 794
--	------------------------	---

RNAV (GPS) RWY 35

GERALD R FORD INTL (G.R.R.)

RNP APCH - GPS.

RADAR required for procedure entry.

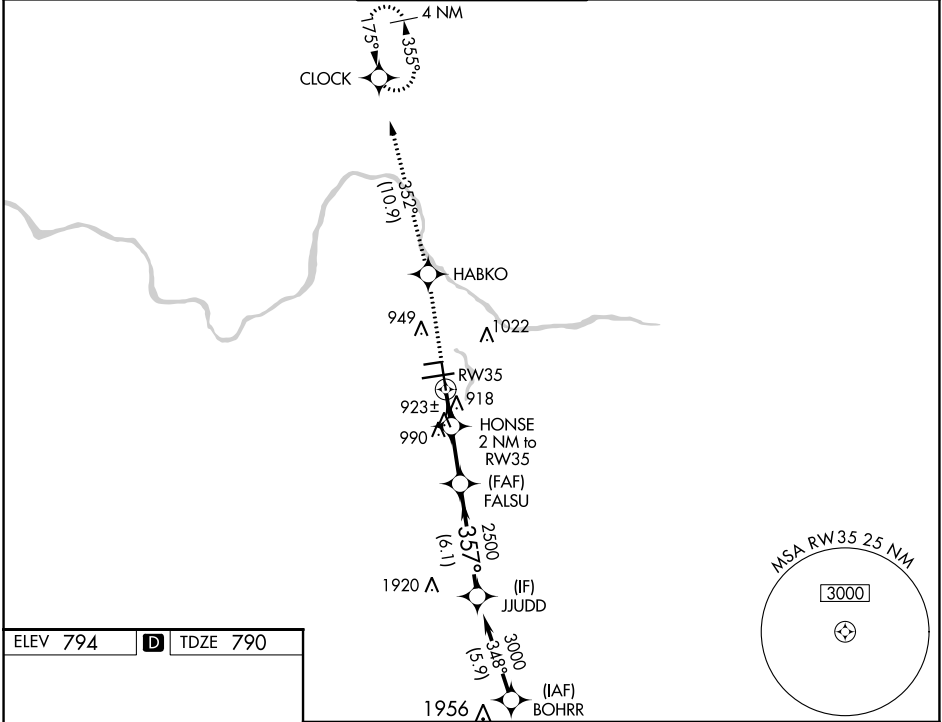
⚠ For uncompensated Baro-VNAV systems, LNAV/VNAV NA below -16°C or above 54°C. For inop ALS, increase LNAV Cat D visibility to RVR 6000. * RVR 1800 authorized with use of FD or AP or HUD to DA.

MALSR

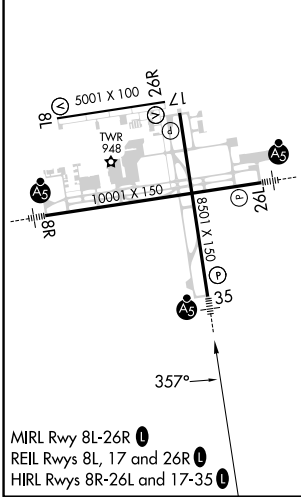


MISSED APPROACH: Climb to 3000 direct HABKO and on track 352° to CLOCK and hold.

ATIS 118.725	GREAT LAKES APP CON * 128.4 257.6	GRAND RAPIDS TOWER * 135.65 (CTAF) 0 339.8	GND CON 121.8	CLNC DEL 119.3	UNICOM 122.95
------------------------	---	--	-------------------------	--------------------------	-------------------------



ELEV 794	D	TDZE 790
----------	----------	----------



MIRL Rwy 8L-26R **Ⓛ**
REIL Rwy 8L, 17 and 26R **Ⓛ**
HIRL Rwy 8R-26L and 17-35 **Ⓛ**

3000	HABKO	CLOCK	VGSI and RNAV glidepath not coincident (VGSI Angle 3.00/TCH 74).		JJUDD
↑	⬠	tr 352°	FALSU	3000	3000
	HONSE 2 NM to RW35		2500	357°	GP 3.00° TCH 55
	1 NM to RW35		1480	2500	
	1 NM	1 NM	3.1 NM	6.1 NM	
CATEGORY	A	B	C	D	
LPV DA*	990/24 200 (200-½)				
LNAV/VNAV DA	1236/50 446 (500-1)				
LNAV MDA	1180/24	390 (400-½)	1180/35 390 (400-¾)	1180/50 390 (400-1)	
C CIRCLING	1260-1	466 (500-1)	1340-1½ 546 (600-1½)	1360-2 566 (600-2)	

EC-1, 26 DEC 2024 to 23 JAN 2025

EC-1, 26 DEC 2024 to 23 JAN 2025