

WAAS CH 40213 W08A	APP CRS 087°	Rwy Idg TDZE Apt Elev	5001 786 794
--	------------------------	-----------------------------	---

RNAV (GPS) RWY 8L

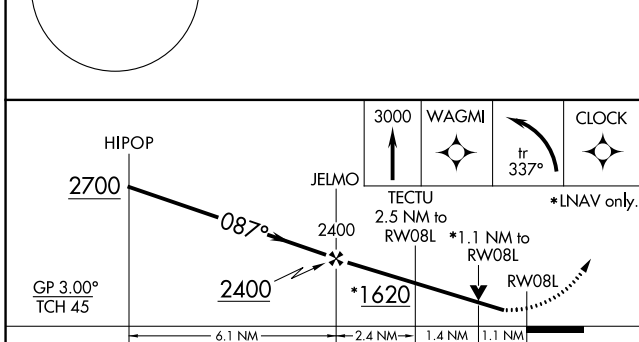
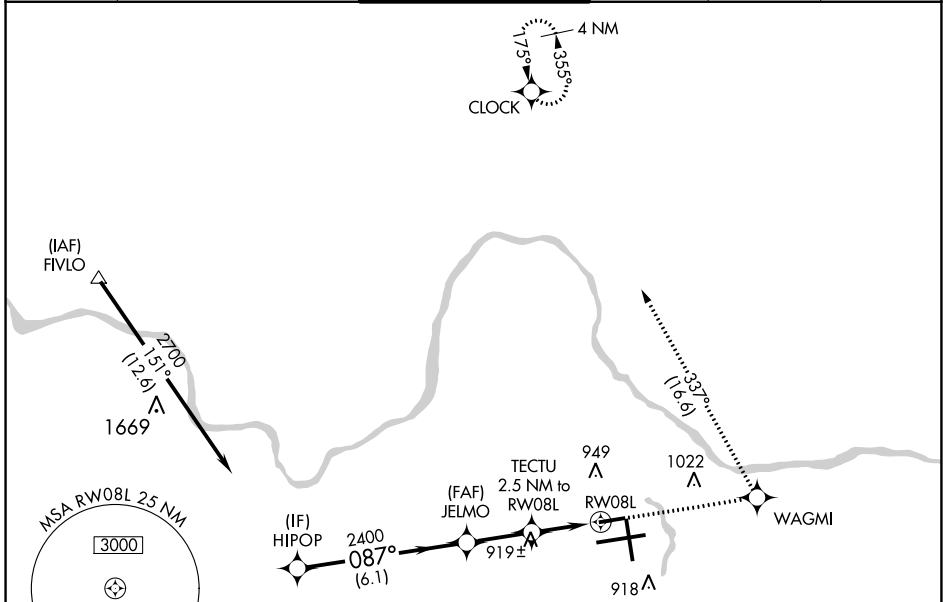
GERALD R FORD INTL (G.R.)

RNP APCH.

T Rwy 8L helicopter visibility reduction below 3/4 SM NA.
A For uncompensated Baro-VNAV systems, LNAV/VNAV NA below -16°C or above 54°C.

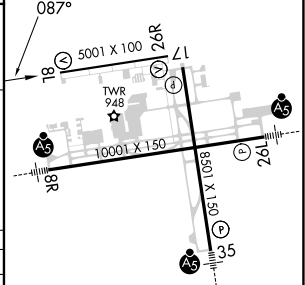
MISSED APPROACH: Climb to 3000 direct WAGMI and left turn on track 337° to CLOCK and hold.

ATIS 118.725	GREAT LAKES APP CON * 128.4 257.6	GRAND RAPIDS TOWER * 135.65 (CTAF) 0 339.8	GND CON 121.8	CLNC DEL 119.3	UNICOM 122.95
------------------------	---	--	-------------------------	--------------------------	-------------------------



ELEV 794	D TDZE 786
----------	-------------------

CATEGORY	A	B	C	D
LPV DA	1036-1 250 (300-1)			
LNAV/VNAV DA	1203-1½ 417 (500-1½)			
LNAV MDA	1180-1 394 (400-1)	1180-1¼ 394 (400-1½)		1180-1¼ 394 (400-1¼)
C CIRCLING	1260-1 466 (500-1)	1340-1½ 546 (600-1½)		1360-2 566 (600-2)



MIRL Rwy 8L-26R **1**
 REIL Rws 8L, 17 and 26R **1**
 HIRL Rws 8R-26L and 17-35 **1**

EC-1, 26 DEC 2024 to 23 JAN 2025

EC-1, 26 DEC 2024 to 23 JAN 2025