

VOR/DME VIO	APP CRS	Rwy Idg	8501
115.95	175°	TDZE	788
Chan 106 (Y)		Apt Elev	794

VOR RWY 17

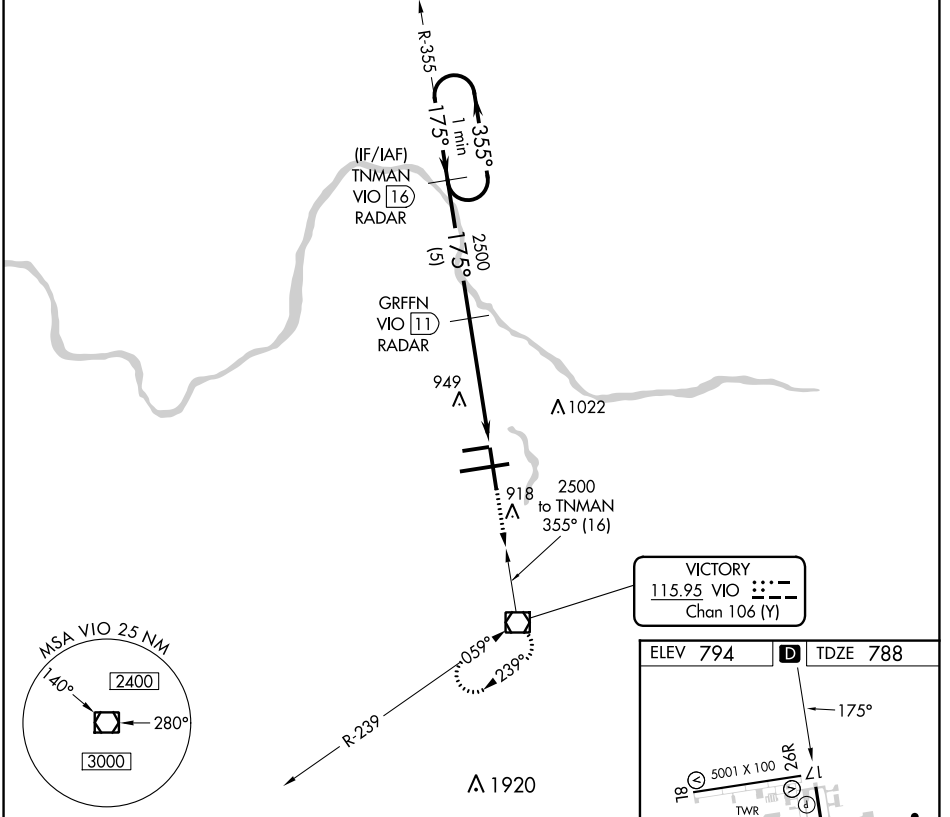
GERALD R FORD INTL (G.R.)

DME or RADAR required.

⚠ When local altimeter setting not received, use Holland altimeter setting and increase all MDA's 80 feet and increase S-17 Cat D visibility ¼ SM. Rwy 17 helicopter visibility reduction below ¼ SM NA.

MISSED APPROACH: Climb to 3000 direct VIO VOR/DME and hold.

ATIS 118.725	GREAT LAKES APP CON ★ 128.4 257.6	GRAND RAPIDS TOWER ★ 135.65 (CTAF) 0 339.8	GND CON 121.8	CLNC DEL 119.3	UNICOM 122.95
------------------------	---	--	-------------------------	--------------------------	-------------------------



VICTORY
115.95 VIO
Chan 106 (Y)

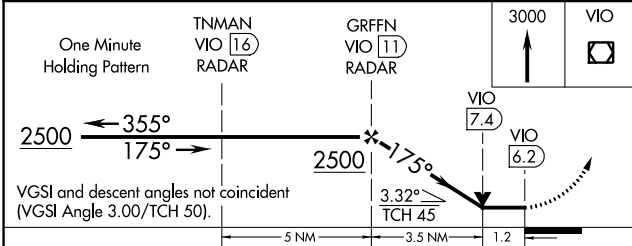
ELEV 794	TDZE 788
----------	----------

Diagram showing runway layout: RWY 8L, RWY 26R, RWY 17, and taxiways (A5, B, C, D, E, F, G, H, I, J, K, L, M, N, O, P, Q, R, S, T, U, V, W, X, Y, Z). Tower location (TWR 948) is also shown. Dimensions for taxiway widths are provided: 5001 X 100, 10001 X 150, 3801 X 150, and 261 X 35.

MIRL Rwy 8L-26R
REIL Rwys 8L, 26R and 17
HIRL Rwys 8R-26L and 17-35

FAF to MAP 4.7 NM

Knots	60	90	120	150	180
Min:Sec	4:42	3:08	2:21	1:53	1:34



CATEGORY	A	B	C	D
S-17	1200-1	412 (500-1)	1200-1¼	412 (500-1¼)
✈️ CIRCLING	1280-1	486 (500-1)	1340-1½	1360-2
			546 (600-1½)	566 (600-2)

EC-1, 26 DEC 2024 to 23 JAN 2025

EC-1, 26 DEC 2024 to 23 JAN 2025