

LAUREL, MISSISSIPPI

AL-5185 (FAA)

24305

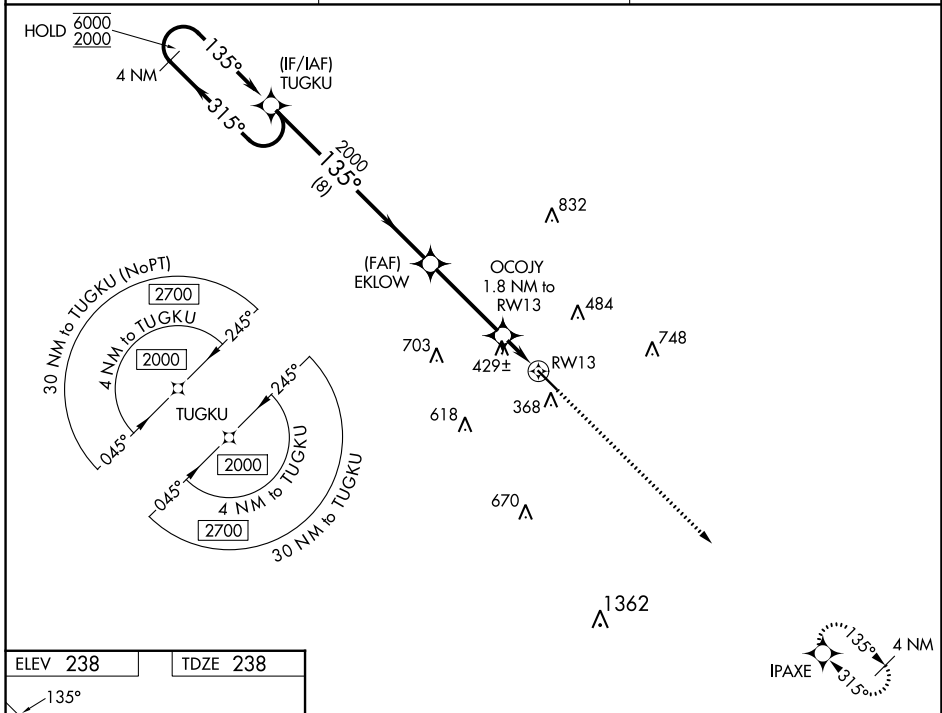
WAAS CH 45704 W13A	APP CRS 135°	Rwy Idg 5513 TDZE 238 Apt Elev 238
---------------------------------	------------------------	---

RNAV (GPS) RWY 13

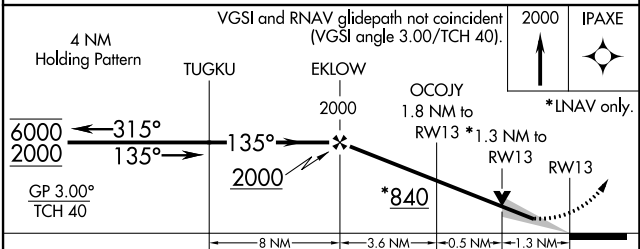
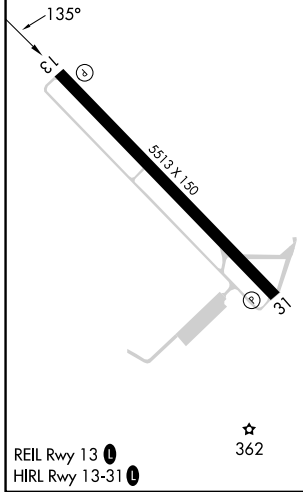
HESLER/NOBLE FLD (LUL)

RNP APCH.	MISSED APPROACH: Climb to 2000 direct IPAXE and hold.
▼ For uncompensated Baro-VNAV systems, LNAV/VNAV NA below -15°C or above 54°C.	

AWOS-3PT 119.275	HOUSTON CENTER 126.8 327.8	UNICOM 123.05 (CTAF) 0
----------------------------	--------------------------------------	----------------------------------



ELEV 238	TDZE 238
----------	----------



CATEGORY	A	B	C	D
LPV DA	488-1		250 (300-1)	
LNAV/VNAV DA	759-1 ³ / ₄		521 (600-1 ³ / ₄)	
LNAV MDA	680-1	442 (500-1)	680-1 ³ / ₈ 442 (500-1 ³ / ₈)	680-2 442 (500-2)
<input checked="" type="checkbox"/> CIRCLING	700-1 462 (500-1)	800-1 562 (600-1)	1040-2 ¹ / ₄ 802 (900-2 ¹ / ₄)	1060-2 ³ / ₄ 822 (900-2 ³ / ₄)

LAUREL, MISSISSIPPI
Amdt 1C 08OCT20

31°40'N-89°10'W

HESLER/NOBLE FLD (LUL)

RNAV (GPS) RWY 13

SC-4, 26 DEC 2024 to 23 JAN 2025

SC-4, 26 DEC 2024 to 23 JAN 2025