

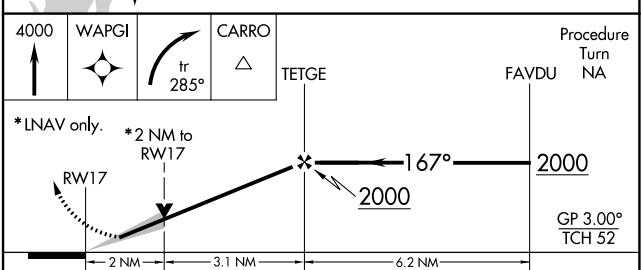
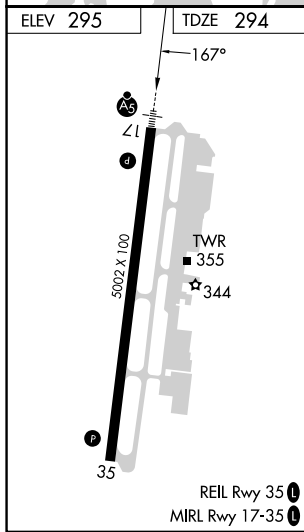
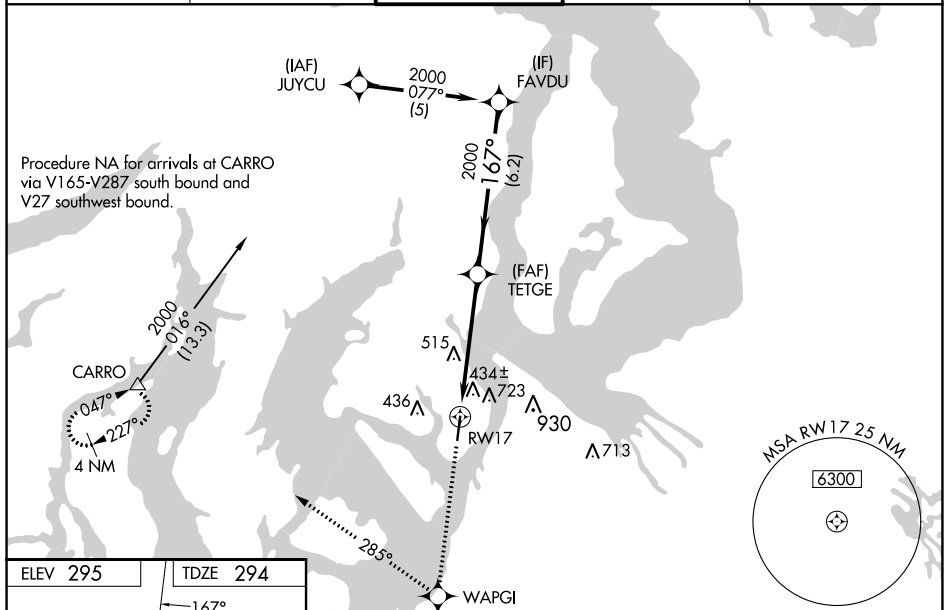
WAAS CH <b>8260B</b> <b>W17A</b>	APP CRS <b>167°</b>	Rwy Idg TDZE <b>294</b> Apt Elev <b>295</b>	<b>5002</b>
--	------------------------	---	-------------

# RNAV (GPS) RWY 17

TACOMA NARROWS (TIW)

RNP APCH.	MALSRS	MISSED APPROACH: Climb to 4000 direct WAPGI and right turn via 285° track to CARRO and hold, continue climb-in-hold to 4000.
<p>▼ VDP NA with McChord Fld altimeter setting. For inoperative MALSRS, increase LPV all Cats visibility to 1½ mile. Circling NA east of Rwy 17/35.</p> <p>▲ Baro-VNAV NA when using McChord Fld altimeter setting. For uncompensated Baro-VNAV systems, LNAV/VNAV NA below -15°C (5°F) or above 48°C (118°F). When local altimeter setting not received, use McChord Fld altimeter setting and increase all DA 25 feet, all MDA 40 feet, and increase LPV all Cats visibility ½ mile.</p>		

ATIS <b>124.05</b>	SEATTLE APP CON <b>120.1 290.9</b>	TACOMA TOWER ★ <b>118.5 (CTAF) 0 253.5</b>	GND CON <b>121.8</b>	UNICOM <b>122.95</b>
-----------------------	---------------------------------------	---	-------------------------	-------------------------



CATEGORY	A	B	C	D
LPV DA	638-5/8 344 (400-5/8)			
LNAV/VNAV DA	992-2 698 (700-2)			
LNAV MDA	980-1/2 686 (700-1/2)		980-1 1/2 686 (700-1 1/2)	
<input checked="" type="checkbox"/> CIRCLING	980-1 685 (700-1)		980-2 685 (700-2) 980-2 1/4 685 (700-2 1/4)	

NW-1, 26 DEC 2024 to 23 JAN 2025

NW-1, 26 DEC 2024 to 23 JAN 2025