

WAAS CH 63199 W17A	APP CRS 174°	Rwy Idg TDZE 843 Apt Elev 845	7351
--	------------------------	---	-------------

RNAV (GPS) RWY 17R

GRAND FORKS INTL (GFK)

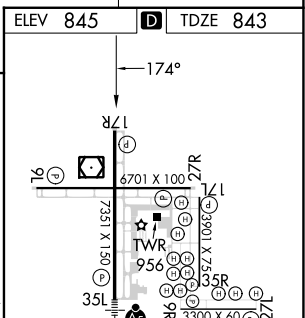
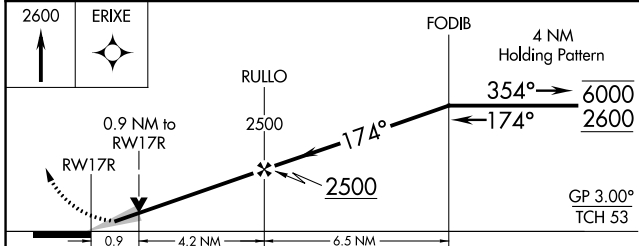
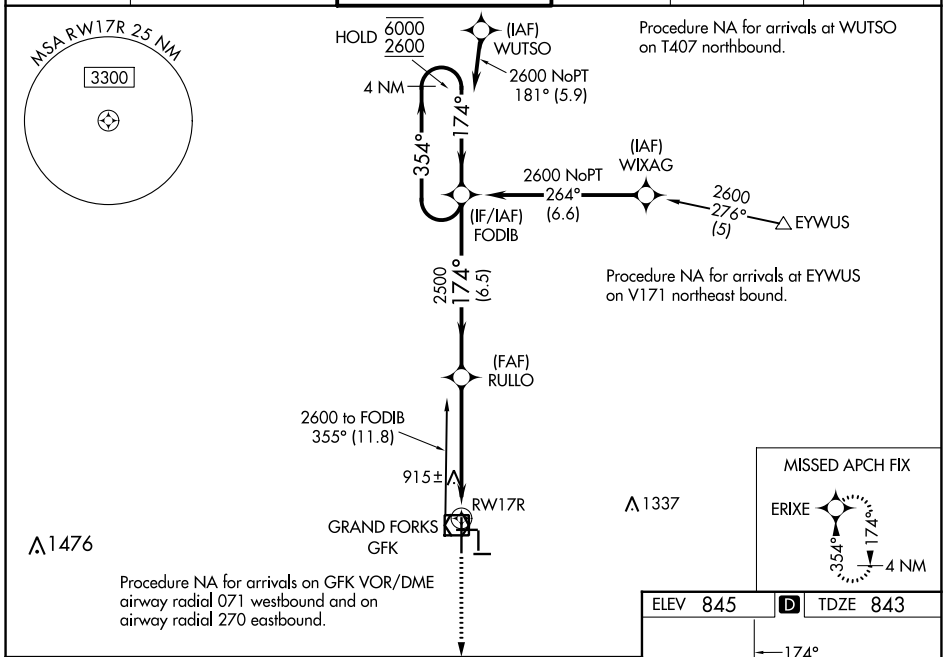
RNP APCH - GPS.

⚠ Baro-VNAV NA when using Crookston altimeter setting. For uncompensated Baro-VNAV systems, LNAV/VNAV NA below -20°C or above 54°C. VDP NA with Crookston altimeter setting.

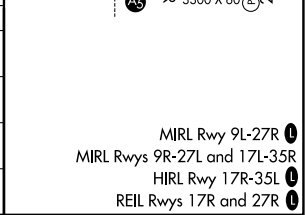
⚠ When local altimeter setting not received, use Crookston altimeter setting and increase all DA 62 feet and all MDA 80 feet and increase LPV and LNAV/VNAV all Cats visibility $\frac{1}{8}$ SM, LNAV Cats C/D visibility $\frac{1}{8}$ SM, and Circling Cat C visibility $\frac{1}{4}$ SM.

MISSED APPROACH:
Climb to 2600 direct ERIXE and hold.

ATIS 119.4	GRAND FORKS APP CON* 118.1 318.1	GRAND FORKS TOWER* 118.4(CTAF) 0 350.35	GND CON 124.575	CLNC DEL 135.725	UNICOM 122.95
----------------------	--	---	---------------------------	----------------------------	-------------------------



CATEGORY	A	B	C	D
LPV DA		1043- $\frac{3}{4}$	200 (200- $\frac{3}{4}$)	
LNAV/VNAV DA		1093- $\frac{3}{4}$	250 (300- $\frac{3}{4}$)	
LNAV MDA		1180-1	337 (400-1)	
C CIRCLING	1260-1 415 (500-1)	1300-1 455 (500-1)	1400-1 $\frac{1}{2}$ 555 (600-1 $\frac{1}{2}$)	1420-2 575 (600-2)



NC-1, 26 DEC 2024 to 23 JAN 2025

NC-1, 26 DEC 2024 to 23 JAN 2025