

DALLAS THREE DEPARTURE
(DAL3 TTT) 25JAN24

ARLINGTON, TEXAS
ARLINGTON MUNI (GKY)

LONE STAR DEP CON
135.975 379.9
CLNC DEL
121.875
CLNC DEL (when twr closed)
118.85
GND CON
121.875
ARLINGTON TOWER*
128.625 (CTAF)

RADAR and DME required.

TAKEOFF MINIMUMS
Rwys 16, 34: Standard.

TOP ALTITUDE:
ASSIGNED BY ATC

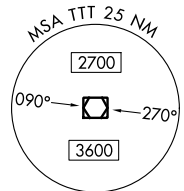
BONHAM
114.6 BYP
Chan 93

MAVERICK
113.1 TTT
Chan 78

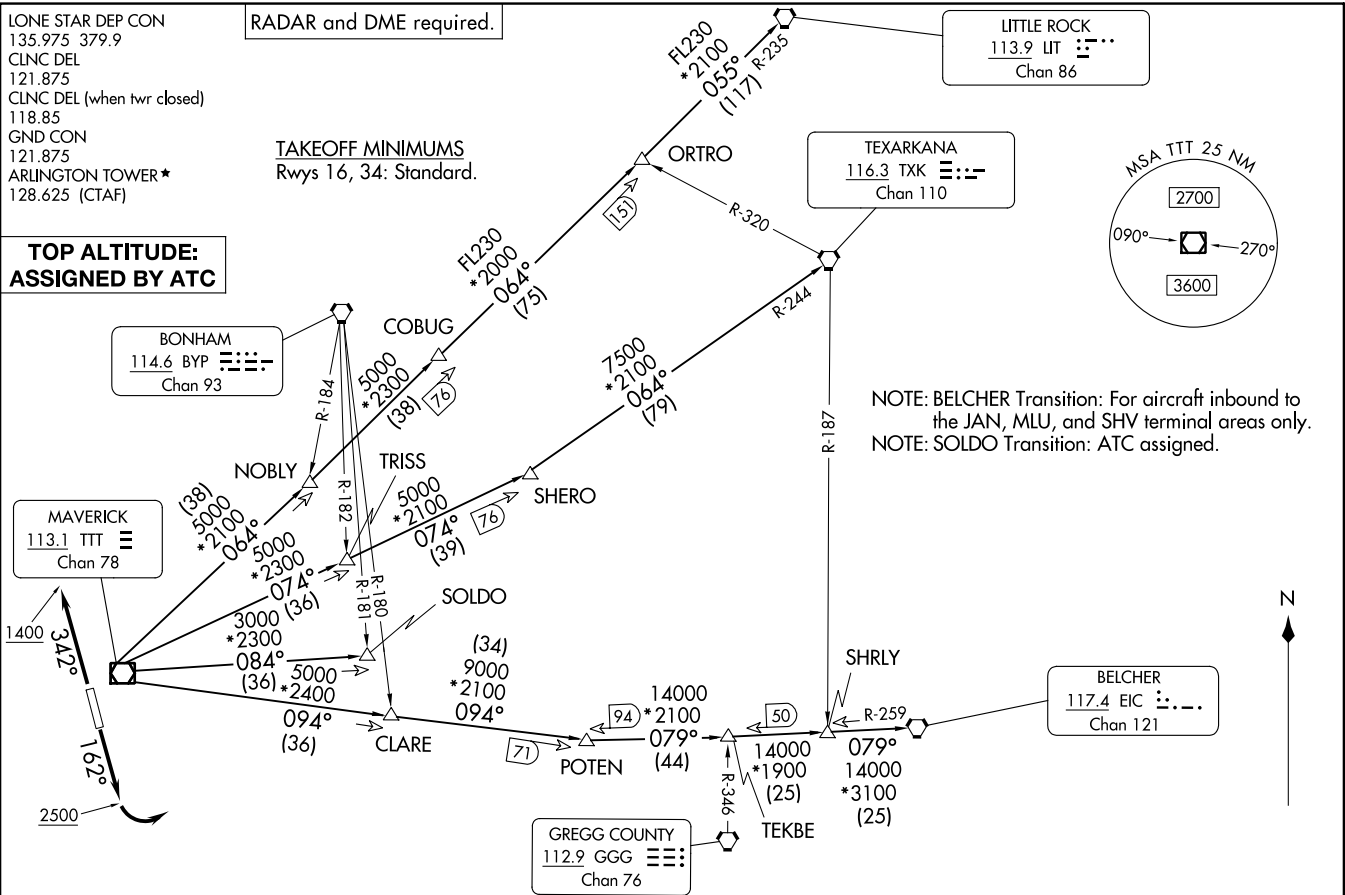
GREGG COUNTY
112.9 GGG
Chan 76

TEXARKANA
116.3 TKX
Chan 110

LITTLE ROCK
113.9 LIT
Chan 86



NOTE: BELCHER Transition: For aircraft inbound to the JAN, MLU, and SHV terminal areas only.
NOTE: SOLDO Transition: ATC assigned.



(CONTINUED ON FOLLOWING PAGE)

NOTE: Chart not to scale.

DALLAS THREE DEPARTURE
(DAL3 TTT) 24305

AL-5189 (FAA)

ARLINGTON, TEXAS
ARLINGTON MUNI (GKY)

DALLAS THREE DEPARTURE



DEPARTURE ROUTE DESCRIPTION

TAKEOFF RUNWAY 16: Climb on heading 162° to 2500 before turning left.

TAKEOFF RUNWAY 34: Climb on heading 342° to 1400 before turning southeast bound.

When entering controlled airspace, fly assigned heading for RADAR vectors to appropriate route. Maintain ATC assigned altitude.

BELCHER TRANSITION (DALL3.EIC): From over TTT VOR/DME on TTT R-094 to POTEN, then on EIC R-259 to EIC VORTAC.

LITTLE ROCK TRANSITION (DALL3.LIT): From over TTT VOR/DME on TTT R-064 to ORTRO, then on LIT R-235 to LIT VORTAC.

SOLDO TRANSITION (DALL3.SOLDO): From over TTT VOR/DME on TTT R-084 to SOLDO.

TEXARKANA TRANSITION (DALL3.TXK): From over TTT VOR/DME on TTT R-074 to SHERO, then on TXK R-244 to TXK VORTAC.

SC-2, 26 DEC 2024 to 23 JAN 2025

SC-2, 26 DEC 2024 to 23 JAN 2025