

APP CRS	Rwy Idg	<b>6080</b>
<b>162°</b>	TDZE	<b>628</b>
	Apt Elev	<b>628</b>

# RNAV (GPS) RWY 16

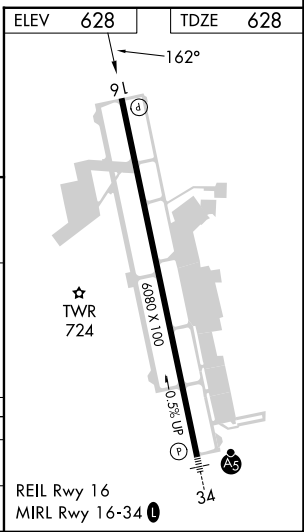
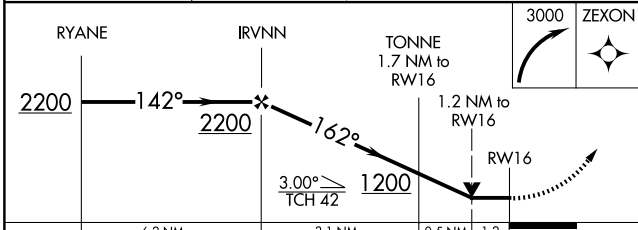
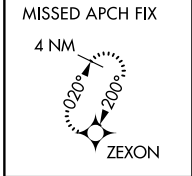
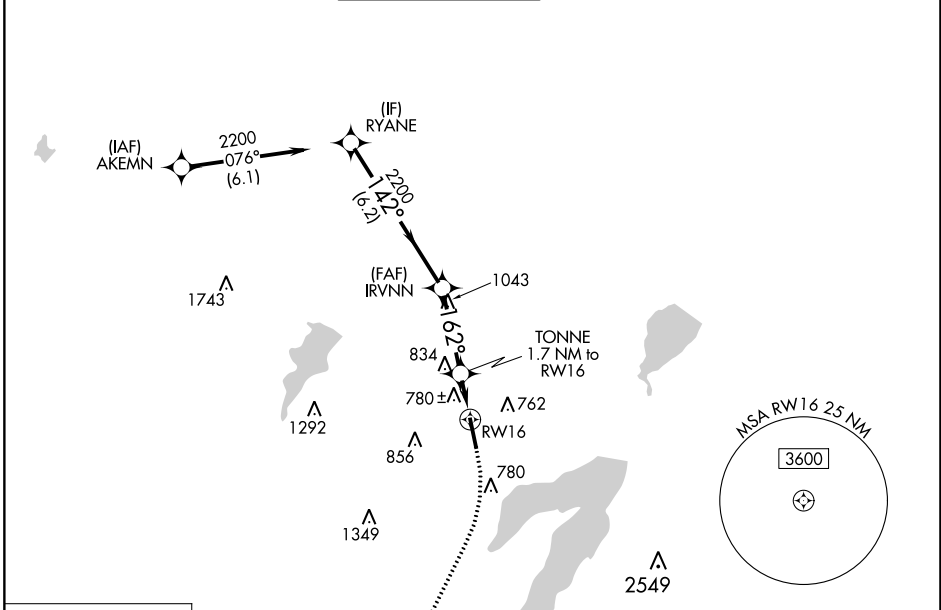
ARLINGTON MUNI (GKY)

RNP APCH - GPS.

**▽** Rwy 16 helicopter visibility reduction below 3/4 SM NA. VDP NA when using Grand Prairie Muni altimeter setting. When local altimeter setting not received, use Grand Prairie Muni altimeter setting.

MISSED APPROACH: Climbing right turn to 3000 direct ZEXON and hold.

ASOS <b>127.375</b>	LONE STAR APP CON <b>135.975 379.9</b>	ARLINGTON TOWER ★ <b>128.625 (CTAF) 0</b>	GND CON <b>121.875</b>	CLNC DEL <b>121.875</b>	CLNC DEL <b>118.85</b> <small>(When twr dosed)</small>
------------------------	---	--	---------------------------	----------------------------	--



CATEGORY	A	B	C	D
RNAV MDA	1040-1	412 (500-1)	1040-1 1/8 412 (500-1 1/8)	NA
CIRCLING	1100-1 472 (500-1)	1140-1 512 (600-1)	1220-1 1/2 592 (600-1 1/2)	NA

SC-2, 26 DEC 2024 to 23 JAN 2025

SC-2, 26 DEC 2024 to 23 JAN 2025