

(BLTWY7.BLTWY) 21280

AL-5196 (FAA)

LIBERTY MUNI (T78)

LIBERTY, TEXAS

BLTWY SEVEN DEPARTURE (RNAV)

CTAF
122.9
HOUSTON DEP CON
119.7 281.4

**TOP ALTITUDE:
ASSIGNED BY ATC**

NOTE: RADAR required.
NOTE: DME/DME/IRU or GPS required.
NOTE: RNAV 1.

TAKEOFF MINIMUMS

Rwys 16, 34: Standard with minimum climb
of 500' per NM to 580.

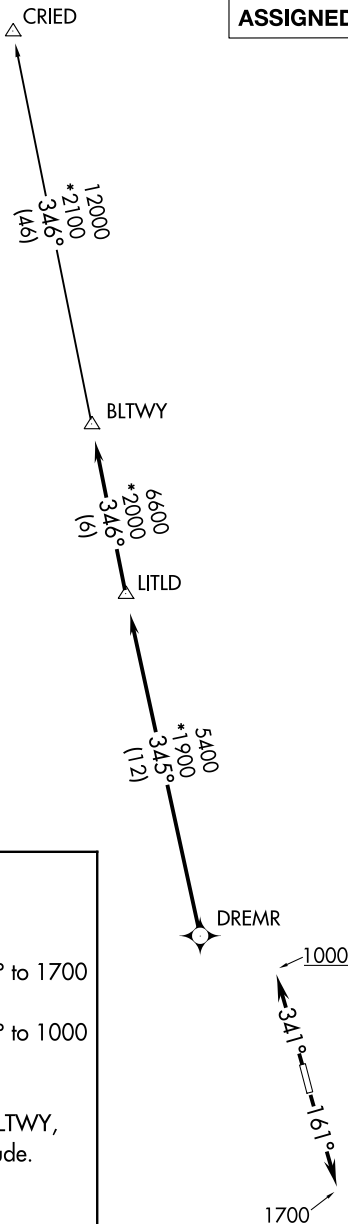
DEPARTURE ROUTE DESCRIPTION

TAKEOFF RUNWAY 16: Climb on heading 161° to 1700
for RADAR vectors to DREMR, thence

TAKEOFF RUNWAY 34: Climb on heading 341° to 1000
for RADAR vectors to DREMR, thence

...on track 345° to LITLD, then on track 346° to BLTWY,
then on (transition). Maintain ATC assigned altitude.
Expect filed altitude 10 minutes after departure.

CRIED TRANSITION (BLTWY7.CRIED)



NOTE: Chart not to scale.

BLTWY SEVEN DEPARTURE (RNAV)

(BLTWY7.BLTWY) 07OCT21

LIBERTY, TEXAS
LIBERTY MUNI (T78)

SC-5, 26 DEC 2024 to 23 JAN 2025

SC-5, 26 DEC 2024 to 23 JAN 2025